



Help wanted!

WANGANUI CONSERVANCY CONSERVATION MANAGEMENT STRATEGY (CMS) REVIEW

Are you a nature lover, outdoor enthusiast, trumper, hunter, fisher, landowner, farmer, tour guide or someone just generally interested in conservation and the environment?

Then read on and see how you can help us develop the direction of Wanganui Conservancy's conservation work for the next ten years.

Why?

Wanganui Conservancy's CMS is nearing the end of its 10 year time span and is due to expire in April 2009.



What's a CMS?

A CMS is a planning document which explains how the Department of Conservation (DOC) will carry out the purposes and aims of the legislation it administers throughout Wanganui Conservancy.

It provides a ten year statement of the values, issues, objectives and anticipated outcomes for conservation management in the conservancy.

This includes management of public conservation lands, conservation advocacy on land not managed by DOC and working with communities and tangata whenua.

Who can make contributions?

Anyone! We want to hear from as many people as possible who have an interest in how DOC manages public conservation land, **before we prepare the draft CMS**. After all, we are managing conservation for **all** New Zealanders!

What's important to you?

In the next ten years, the new CMS will direct significant conservation efforts to special places in the region, chosen for their significant ecological, historic, recreation, community or cultural values.

What is most important to you? Fill in the enclosed feedback form and tell us what you think!



Department of Conservation
Te Papa Atawhai



DID YOU KNOW, IN WANGANUI CONSERVANCY THERE ARE...

Natural heritage:

- 2 National Parks
- 2 Conservation Parks
- 800+ Conservation areas and other types of reserves
- 2 Marine reserves
- 29 threatened bird species
- 3 threatened freshwater fish species
- 4 threatened marine mammals
- 7+ threatened invertebrates
- 2 threatened bat species
- 8 threatened reptiles
- 111 threatened plants
- 315km of coastline
- 1 Ramsar wetland

Recreation:

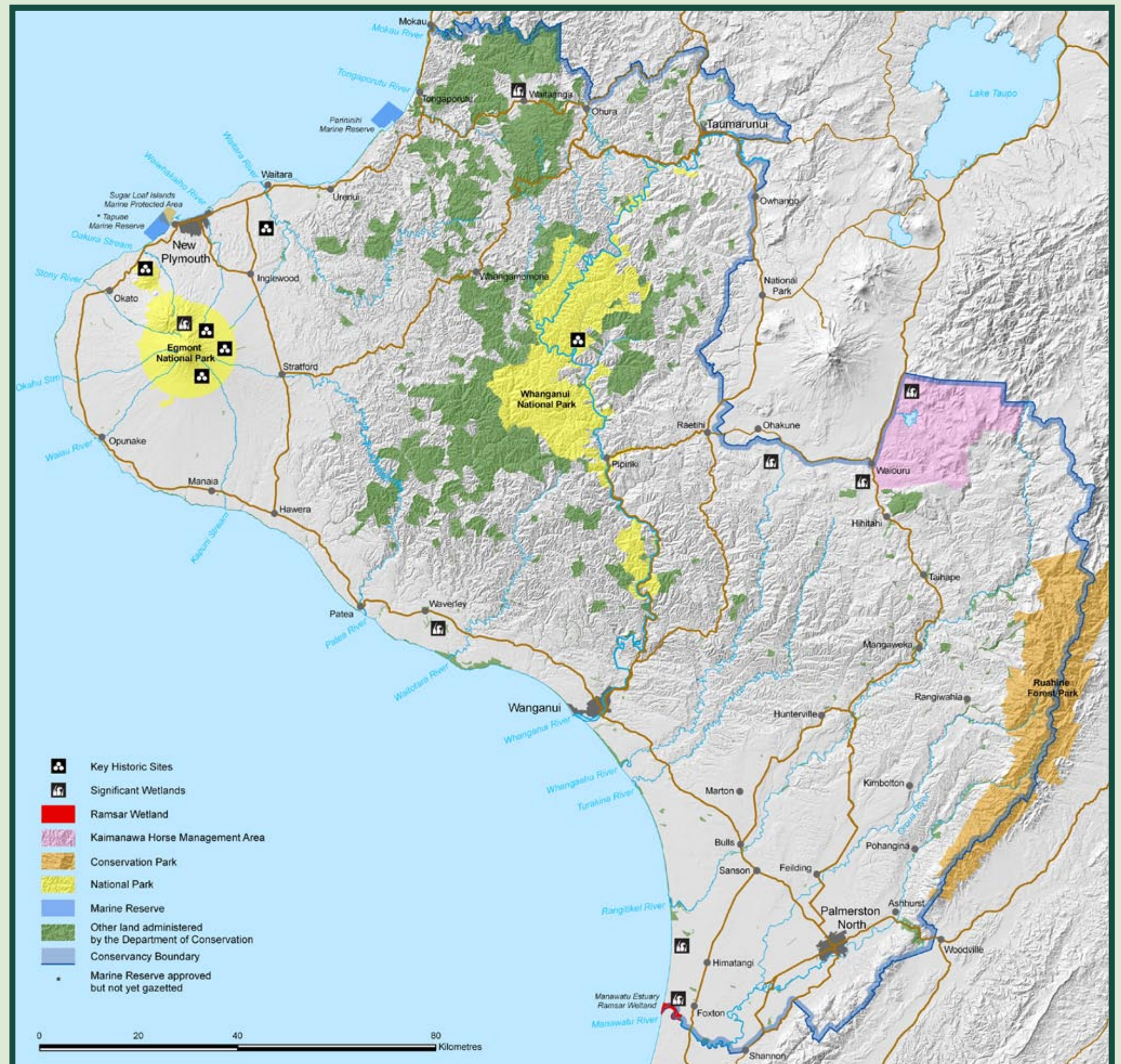
- 47 DOC huts
- 19km of walkways
- 750km of tracks
- 177 concessionaires
- 1 Ski field
- 360,000+ visitors to public conservation land per year

Historic:

- 52 actively managed historic sites
- 200 known historic sites

And they are threatened by:

- 1000+ weed species
- 18 mammalian pest species
- Wild fires
- Biosecurity risks



What's the review process?

- Informal community consultation has started and comments/suggestions are now invited
- Comments considered and draft CMS prepared
- Draft CMS publicly notified, formal community consultation and written submissions invited - hearings for submitters who wish to be heard
- Draft CMS revised by DOC in light of submissions
- CMS considered by Taranaki/Whanganui Conservation Board
- NZ Conservation Authority (NZCA) consideration and referral to Minister of Conservation for comment before final approval by NZCA

What can you do?

Fill in the enclosed feedback form with your comments and suggestions regarding the CMS review. Additionally, attend one of the CMS meetings that will be held in your area. Check the DOC website for details or contact your local DOC office.

Need more information?

- 1 Contact Wanganui Conservancy Office, Ph (06) 349 2100 or email wanganui.cms@doc.govt.nz
- 2 Call a member of the Taranaki/Whanganui Conservation Board - contact Wanganui Conservancy office for member details.
- 3 Visit www.doc.govt.nz

Please send your comments to Wanganui Conservancy by 4pm, Thursday 24th April 2008:

Freepost 137998
Department of Conservation
Private Bag 3016
Wanganui 4500
or
Fax: (06) 348 8095
Email: wanganui.cms@doc.govt.nz