



Established in 1974, the objective of the Association is to further and improve Four Wheel Drive activities in New Zealand.

As a member of the NZFWDA, you become an integral part of this effort to ensure that present and future generations can continue to enjoy our country in four wheel drive vehicles.

Trail Torque is produced four times a year and delivered via the NZFWDA Membership email database.
 This issue: June/July/August 2016 • Next issue Sept/Oct/Nov 2016



IN THIS EDITION



Central Zone Club Truck Challenge - Page 6

- NZFWDA Committee2*
- NZFWDA 2016 4X4 CONFERENCE.....2*
- CZ Club Truck Challenge6*
- CTC - The Family Connection..... 10*
- Fraser Island..... 12*
- WINNER OF A2 CANVAS PORTRAIT 13*
- South Island Snow 14*
- NZFWDA Executive Reports..... 16*
- 4x4 Events Calendar20*
- Northern Zone Clubs 21*
- Central Zone Clubs.....23*
- Southern Zone Clubs.....24*
- Kids Page25*

2016 NZFWDA 4x4 Conference

ARTICLE AND PHOTOS BY: BOBBIE KINCAID

This year the NZFWDA 4x4 Conference was four wheel driving on the tracks of the Akatarawa Forest to Orange Hut for an evening meal. Cross Country Vehicle Club (CCVC) hosted the Club Delegates on a Family Shiney Trip.

The Akatarawa Forest is an area enjoyed by Hunters, Trampers - we met one at Orange Hut (he was staying for the night), Bikers; motor and pedal power and four wheelers.

Our day started with Safety Briefings, head counts and radios for all vehicles (CCVC have their own channel - there were some cracker one liners from the boys!). The tracks we drove on covered every terrain a shiney vehicle should be able to handle. We saw unusual tree formations, logging sites, deforestation, new plantings, gravel, stones, mud, water, streams, rivers, mountain ranges and seat hopping.

A catered Roast Dinner and Lunch were included in our trip. We had filled rolls - vegetarian option available, fruit, baked biscuits (two sorts), muesli bar and bottles of water. Thanks to the volunteers at Mangaroa School, Whiteman's Valley. Maurice, from CCVC, tells me they often get lunches made by the School for Events CCVC are hosting.

From the 4x4...



Canopy



Floor



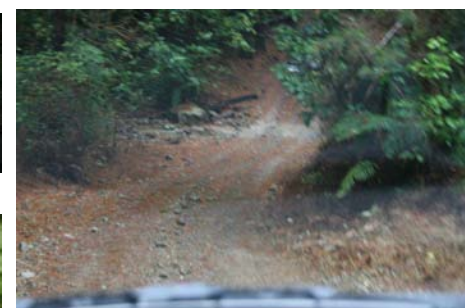
Front



Rear



We had sun and showers.



Small patch of mud



NZFWDA Executive

President	– Neville Dunton
National PRO	– Roger Seymour
Secretary	– Bobbie Kincaid
Treasurer	– Jenny Croasdale
Northern Zone President	– John Hickey
Northern Zone PRO	– Tony Burgess
Central Zone President	– Max Wheatley
Central Zone PRO	– Brent Samson
Southern Zone President	– Russell Quin
Southern Zone PRO	– John McDonald

NZFWDA Competitions Committee

National Competitions Officer	– Ron Sturme
Secretary	– Rachel Lobb
Northern Zone Steward	– Bruce McGregor
Steward	– Brent Samson
Treasurer	– Stacey Gwynne
Northern Zone Scrutineer	– Glenn D'Arth
Central Zone Scrutineer	– Wayne Buckthorpe
Scorer	– Jenny Samson

DISCLAIMER: The opinions expressed in this issue are those of the contributors and not necessarily those of the Association, Executive Members or the Trail Torque Editor.

There was significant acclaim from members who participated and general consensus was that more “conferencing” occurred in trucks and during breaks than would normally occur in a formal setting.

The 2016 NZFWDA AGM the next day extended the General Business to ensure topics that would have otherwise been discussed at a Conference could still be aired.



Stops were never for long.





Experienced riders, drivers and no shiney's! But we can check it out on foot....



Walking the Rock Garden....



Can you see Pedro's marks from the top?



Sorry, the group shot photo was a fail, this isn't everyone.



Lunch time - thanks to Mangaroa School



Everyone arriving for lunch



Looking up the pylon



Hamish started 4WD'ing in the early 70's

The original Orange Hut was built as a forestry workers hut in the middle of last century. Past its sell-by date, Akatarawa Recreational Access Committee Inc (ARAC) replaced it with a brand-new structure, but sadly after several years, someone burnt it down. Not to be beaten, ARAC in conjunction with Greater Wellington Regional Council rebuilt the Orange Hut Mark III using concrete blocks and steel to avoid such things happening in future. The BBQ area measures a cool 6 metres along all three walls.

(SOURCE: <http://arac.org.nz/home/arac-divisions/akatarawa/orange-hut/>)

Pamphlet: <http://www.gw.govt.nz/assets/council-publications/Akatarawa.web.pdf>



Remember to replenish the wood pile if you use any. Thanks!



PHOTO: ARAC News - November 2015



When the day run became a night run....

2016 NZFWDA AGM Awards & Trophies

YOUNG DRIVER OF THE YEAR AWARD: Daniel Howat, Windy City Off Roaders.

MCMINN TROPHY - FOUR WHEELER OF THE YEAR: Russell de Luca, NZ Jeep Club Inc.

LIFE MEMBERSHIP TO THE NZFWDA: John and Nonnie Cowper, Wanganui 4WD Club.

SPORTSMAN OF THE YEAR: - Pierre Le Lievre, Eastern Bay Twin Diff Club

CZ Club Truck Challenge

CENTRAL ZONE CLUB TRUCK CHALLENGE 2015- 16 ROUND 3 - ORONGORONGO STATION.
HOSTED BY WELLINGTON JEEP CLUB, 12 MARCH 2016. ARTICLE AND PHOTOS BY ANDREW GEE



Wellington Jeep Club organised Round 3 of the Club Truck Challenge (CTC) but there was more than a 4wd Trial, there was farmhouse accommodation sourced and a spit roast meal for supporters of the Series. The weekend was a great success with close and friendly competition, if you don't come out and see what it's all about then you're missing out. The executive summary says Jeeps came 5 out of the top 6 places and the normally reliable Toyotas had three mechanical failures. The first DNS was Rob who left Taranaki in his Land Rover only to have a fuel pump fail on the highway. A search on Friday couldn't find a replacement and he had to stay at home.

This property we use has a range of different terrains that gives this Trial a good variety of conditions to test the drivers. After our long dry summer there weren't any bogs or creeks to test traction or ground clearance instead we used the gravel sections which were very loose and have cost a windscreen in the past. Hazard 4 made an interesting comparison of vehicle articulation

A good selection of the types of truck entered in this Round, all short wheel base this day.



Neil Blackie goes too far in the sideling to tip over without much damage.



Alan Stone from the Mt Egmont Club noses his Cruiser into the ground before exiting the hazard.



by crossing a dry creek bed a number of times. The difference between leaf and coil spring suspensions and then the level of modifications done to the vehicle was clearly demonstrated. We reused the rock pile on the air strip and it proved too tricky for me, I couldn't stay in the course while trying to avoid the boulders.

Neil's Land Rover found its side angle limit and flopped over, fortunately without any great damage and a quick recovery was confidently carried out. A few hazards before Shona broke a CV joint in their Cruiser but they had a spare so she and Alan shot back to the pits to do a repair. They worked over the lunch break to make repairs and then finished the day and then headed back up the hill to finish the hazards they missed. While thinking about the spit roast meal to come that evening, Alan blew another CV joint and called it a day.



Don Morgan's TJ5 Offroad racer lifting a wheel with front and rear coil suspension.



Ross Gregory from Wairarapa 4x4 Club keeps the Jeep immaculately clean



Dave McGinnity from Windy City Offroaders wrestles his CJ5 through the rock pile hazard.



Tony Gimblett from Levin 4x4 Club clears the ungraded hazard and can work back to calculate his score.



Deane Whitton uses the weight of the Class 3 Nissan to plough up the creek bed losing valuable momentum which he will need to make the turn at the top.

4WD Off-Road Insurance



Whilst enjoying the 4WD off-road experience your insurance needs are very specific and in most cases your standard motor vehicle policy does not cover you for off-road activities and club events.

In conjunction with the New Zealand Four Wheel Drive Association this 4WD Off-Road insurance product has been specifically designed for **your** needs and is available only to club members. The programme has been in place since 1999 and its longevity speaks for itself.

Vehicles are covered comprehensively for off-road and on-road use and the policy accommodates heavily modified vehicles which are often difficult to insure.

Going into forests on a non-club excursion? Ask about the Fire Service Liability extension.



Phone (09) 827 7266
PO Box 1412, Shortland Street, Auckland
insure@barley.co.nz www.barley.co.nz

The last four hazards were near the pits in the paddock that CCVC use for driver training and the dry conditions made them straight forward. One hazard crossed a deep ditch that stopped a number of vehicles with insufficient break over angle so Marty put himself at a completely different angle and planted his boot, why we will never know, the rear pinion let go and he was left to reverse every where until he could pull out the rear axle shafts.

The day was finished with a speed section that was a grudge match on many levels. Mark posted a good time early on, thanks to 400 cubes of Chevy power but Don pumped up the tyres of his off-road racer to record the fastest time of the day. Meanwhile Steve put up a time that his son Robert beat by caning the poor Nissan. Finally Alan set a time in 2wd in his Cruiser before handing over to his wife Shona who got stuck without all wheels driving.

The next round was held at Ratana hosted by the Manawatu Club on April 24 and this year's final was in Waiuoru on May 14.



Deane Whitton from Wellington's CCVC Club flies his Class 3 Nissan out of the ungraded hazard to be able to complete a score.



Shona Stone from Mt Egmont Club runs this Cruiser in Class 2 but runs out of clearance.



Mark Stockler's much modified 40 Series Landcruiser with coil suspension showing real flexiness



Steve Stewart from Fielding Club feeds the big Nissan up a climb.



Marty Green from Capital Cruisers Club hopes his FJ40 will clear the ditch and pass through the blue pegs.



Bruce Tustin's TJ Wrangler is on flexy coil suspension probably with springs that are too stiff.



Tony Gimblett from Levin 4x4 club wrestles with the flying pig.



Neil Blackie from CCVC making good progress on the new creek hazard.



Don Morgan from Wellington Jeep Club used his off road racer in this Round, still in Class3.



Alan Stone starts the rock pile hazard passing the initial climb for 80 points.

Overall	Name	Class	Score	Club
1	Dave McGinnity	3	211.1	Windy City Offroaders
2	Don Morgan	3	247.7	Wellington Jeep
3	Andrew Gee	3	317.8	Valley 4wd
4	Neil Blackie	3	331.1	CCVC
5	Ross Gregory	1	365.3	Wairarapa 4x4
6	Bruce Tustin	3	372.2	Wellington Jeep

Calendar and entry forms for the Central Zone Club Truck Challenge can be found on www.czctc.org.nz



Mark Stockler from the Valley 4wd Club is one of the few to make the turn out of the creekbed.



Ross Gregory from Wairarapa 4x4 Club pedals his Jeep with skill.



Dave McGinnity finds good traction for his Class 3 Jeep through a tricky climb out of a streambed.



An example of a front and rear leaf sprung vehicle's articulation, Alan and Shona Stone's 70 Series Landcruiser.



Alan and Shona work on the Cruiser to replace a CV Joint.



Brendan Watchorn Club Truck Series and Class 2 stalwart throws out dirt but is crossaxled at 80 points in his Pajero.



Neil Blackie's Land Rover from Wellington's CCVC Club on the rockpile.



A Pajero not really flexing its independent front suspension.

CTC - The Family Connection

ARTICLE AND PHOTOS BY ANDREW GEE



Series organiser Mark Watchorn returned to competition this year in Class 1 and placed second overall in the Class for the 2016 Series.

I've noticed in professional motorsport the kiwi rockstars like Hayden Paddon, Scott Dixon and Shane Van Gisbergen have one thing in common in that their parents competed in Club motorsport.

We have a number of cool people that enter the Central Zone Club Truck Challenge (CTC) all over the lower North Island during the summer. Our 2016 season has just finished and we had every kind of family relationship represented.

Let's start with the brothers Mark and Brendan Watchorn. Mark put the Challenge together some five years ago and Brendan has entered every Round that has been held. They have changed Classes to avoid directly competing against each other, how kind is that? Next is Steve Steward from the Fielding Club who arguably has also done every Round, Steve normally has one of his sons riding shotgun. Usually happy to just sit there Steve's older boy had to record a time in a speed hazard to prove he was faster than Dad.

The father-son is the most common relationship either each in their own vehicles or cross-entered, Les Thomsen bought out two boys to this year's Ratana Round but the old dog Les cleaned up everyone and won the Round. Peter and Shaun Robinson run a pair of modified Nissan Patrols very capably including Round wins over the years. Tom and Stu Wyeth cross enter in Tom's Jeep Wrangler. This Season we had a new entrant in two Rounds, Kelsey Van Wass and a number of us wheeled with her dad Ross in a number of Pajero "Fridges" as he still looks for the best one. So that would be a father-daughter if Ross would turn up to a Round.

In the husband-wife department first and foremost we have Shona and Alan Stone from the Taranaki. Shona has been the CZ Treasurer for so long we've forgotten when she started. They almost single handedly put on the Taranaki Round every year which generally starts our Season off with a good weekend away. Alan and Shona celebrated their 33rd wedding anniversary during the Waiouru round at the lovely Waiouru RSA



Series and Class 2 stalwart Brendan Watchorn gives his Pajero the jandal.



Tom and Stu Wyeth from Wairarapa 4x4 Club both cross enter in Tom's Jeep Wrangler.



Alan Stone of Mt Egmont Club, had a great weekend to finish first in Waiouru, ahead of the modified machines.



NZFWDA Stalwart Shona Stone from Mt Egmont 4x4 Club has put on the Taranaki Round for many years

with 20 of their closest 4wd mates. At the Waiouru Round we had a new husband and wife Wayne and Karen try Club Truck for the first time. They were watching the Suzuki Extreme on TV enviously and dreaming of running a short wheel base vehicle.

Trials stalwart Dave Hintz reverses the usual trend by bringing his parents! Judith and John Hintz are capable competitors and often

do Club events.

Lepperton local Rob Hopper has his grand children as codrivers but they are getting ready to drive themselves, they might need something more reliable than a Land Rover though.

Teach your children well ... Feed them on your dreamsand know they love you.

Crosby, Stills and Nash



Kelsey Van Wass from Tararua 4x4 Club was the hero of many small boys in her "Bumblebee" Suzuki.



Mike Thomsen from Manawatu 4wd Club competes in his cut down Nissan Patrol.



Judith Hintz has a lot of experience in competing in Club champs and gave a good showing at the Club Truck Challenge.



Peter Robinson competes against his son, Shaun in a similar Nissan.



Shaun Robinson from Manawatu 4wd club runs this Nissan in Class 3.



Come see all the 4x4 stuff in one place, from winches to oil, tyres and tools, lighting and clothing, there will be recovery equipment including spades to dig yourself out!

Displays of new or second hand 4x4s, professional advice on site and a wide range of off-road vehicles.

More info online: centraldistricts4x4.co.nz

www.facebook.com/events/789757834462821/

Fraser Island, Australia.

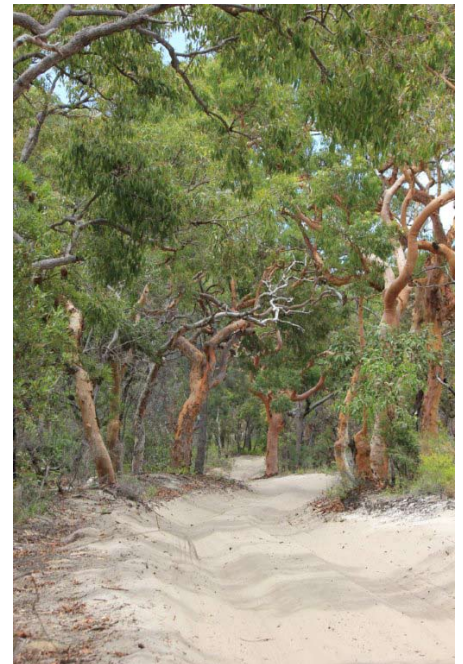
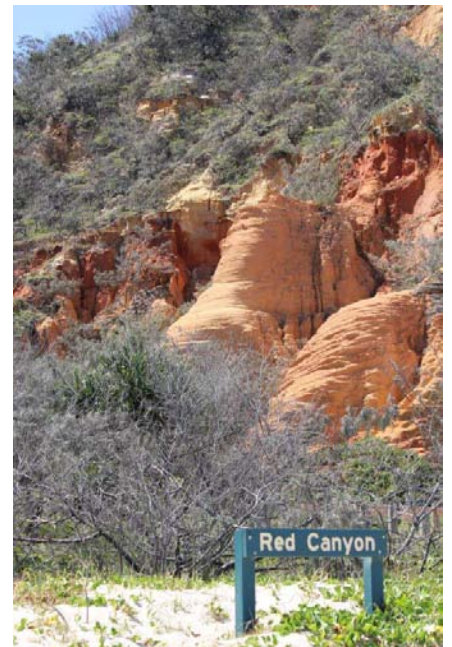
ARTICLE BY NATHAN BURGESS. PHOTOS BY WENDY BURGESS

How often do you board a barge by driving along the beach where it docks? It's such a good idea; why not use it more often? The beach, Rainbow beach, was gorgeous with its soft white sands and calm, clear blue water. Perfecting boarding point wouldn't you say? It was made better by watching the supply runners Hilux blasting across the beach trying to catch the barge before she had to wait another forty minutes.

Once the barge launched I noticed something, it was a sea of Land Cruisers, besides the one Hilux (Says something about Toyotas huh). All of which were very similar, either white or grey heavily modified for long distance off roading. Then there was our Land Cruiser, a bone stock 100 Series painted maroon with

"Rainbow beach 4x4 Hire" plastered over the side of it. Needless to say I felt conspicuous. Once off the barge it became clear driving on Fraser Island, being a large island of super soft sand. Clearly something the locals were used to as everyone else shot off into the distance leaving us far behind confused about our new environment. Eventually, and after licking our wounds from the rough part of the beach, we arrived at the resort we would be staying at for the next few nights.

And you know what? 80% of the vehicles at the resort were Land Cruisers. Does that resolve the great 4wd debate? No? Oh well. Anyway, the more interesting vehicles were the massive 4wd buses that the normal tourists ride around on.



Jesus they were impressive. But rather than drool over the buses we had to rest for another day of exploring this huge sand island.

The plan for the next day was to drive as far north as we were allowed, and after a couple of hours, and many embarrassing attempts at various dunes we made it as far north at the rental company had permitted. The beach its self was just like any other Australian beach (besides the deep holes of water which Tony didn't drive into), but the inland was incredible, narrow sandy tracks surrounded by beautiful giant hardwood trees lifting the canopy far above. It was like driving through a sandy rainforest. Best of all it was full of surprises, like genreal stores with food and fuel in the middle of no where.

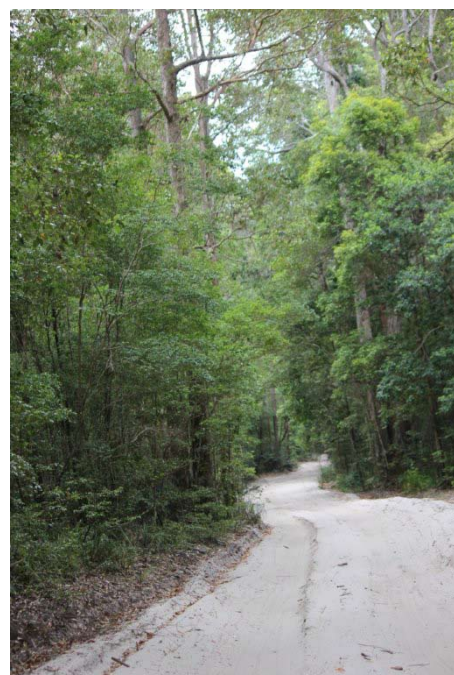
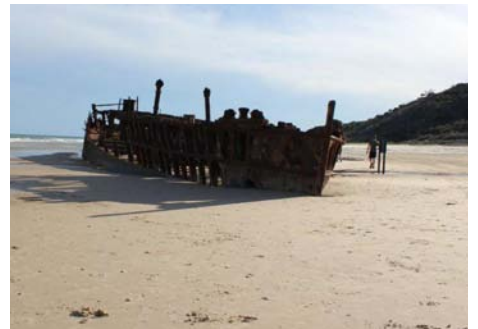
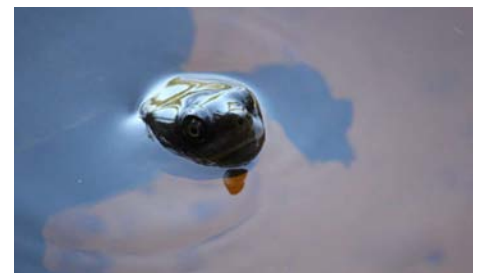
Pressing on back south we stopped off at champagne pools, which unfortunately, are not really pools fullled with alcohol but gosh, they really were amazing. The waves crashed against the rocks in

just the right way that the white water mimicked opening a bottle of champagne in all its glorious fashion. It would have been an amazing place to lie down in and have a drink but no, we had to get back to the resort before 6pm.

We stopped quickly at Lake Allom to rave over the very friendly turtles and for a walk around the lake during which we hopefully wouldn't be attacked by dingos.

Back on the beach we paused a bit to admire the remains of the SS Maheno which I really couldn't understand why people think its so great? It's a rotted ship that was being taken to be scrapped when it was shipwrecked anyway. Never the less if I had to have something to ruin my sea view it would probably be that.

The last stop before we turned in for the night was Eli creek to cool down by floating down the creek on a giant inflatable jandel. Nice. The last day we spent all inland which personally I felt was a lot better than the beach, soft sand,



bushy tracks still with the giant trees. I absolutely loved it, and it was made even better by the dazzling, clear blue lakes that were scattered throughout the inland. Apparently they were also good for the skin, guess that's a plus? Unfortunately though it started raining for the first time while we were there, but for what I like to think as a sandy rainforest maybe it was appropriate. It did make the guy in his self described trophy truck Nissan Navara happy though.



Our plan was to make it to the other side of the island (where the other resort was) so we could have a proper look at the island before we left, which we did do, but there was still so much more. We really should have spent more time there, exploring the tougher tracks and spending more time simply relaxing at either resort (or even the campsites).

Fraser Island is truly a gorgeous, gorgeous place and I do really look forward to going back soon, just maybe in my own vehicle.
And without my brother.



South Island Snow

SOUTHERN ZONE COMMENT FROM RUSSELL QUIN.

As most of you are probably aware there has been quite the drama in Central Otago on the Old Man Range involving 13 vehicles and 38 people. Those who have had the privilege of traversing this area will know that this is one of the remotest areas available to Four Wheel Drivers in New Zealand and conditions can change up there in a matter of minutes and that is no exaggeration. A couple of years ago we were up in this area on the Blenheim to Bluff run that the Association ran enjoying a pristine day with views that always blow people away who have not been up there.

Over the last week I have had several conversations with the media asking what a group would be doing up there and why would you go. For me the answer is easy I have lived all my life in the Otago/Southland area and travelled extensively overseas, in my humble opinion it is hard to beat the vistas solitude and share beauty of this place. It is iconic New Zealand. Besides the scenery this road does offer other attractions to four wheel drivers. It requires skill to navigate the tracks as they can be very rutted, extremely deep and full of mud, you can find yourself very stuck in a heartbeat, however if you are careful you can generally negotiate as the tracks tend to have a hard bottom. It is not a place you would attempt by yourself or even with one other vehicle and when it snows - well we all can see the problems you face then. Travellers on this road need to be aware of the dangers it holds and the environment they are heading into.

I do not know any of the group that were up there and they certainly weren't Association members. On the surface it



SOURCE: <https://www.facebook.com/Heliview/>

appears that they were reasonably prepared however I'm not sure of their ability to read or listen to a weather forecast and I do note by looking at the photos on facebook that some vehicles do not appear to have chains on and some tyres on vehicles were not that aggressive. In saying this in the sort of conditions they would have faced, mud terrains and heavy duty chains may have made some difference but not sure if it would have got them through.

So this is a timely reminder to everybody to be prepared before heading out and one of the basics is checking the forecast before you go and if you get there and it looks marginal – Don't go.

One of the things that Clubs should be staunch on and I know pretty much all Clubs are, is that it is essential to have good procedures in place before heading off. The Trip Leader is boss and he/she should be capable and experienced enough to make the big calls. Check your gear and make sure you have the right gear for the sort of trip you are heading out on. There is plenty of room in vehicles to store gear. Being a trumper of old I have to continually remind myself when four wheeling that I am not carrying the gear myself so I can put that extra jacket, blanket, hat and food in my truck.

The guys that brought them off the snow said that the four wheelers had fixed a tyre which had come off a rim and had some issues with a gear box in a vehicle so it sounds like they were capable mechanically.

If you get yourself in a position where you need to be rescued and you find there is media around it is not a good idea to give them the bird. It does not go down well with them or members of the general public who have plenty to say about us and our perceived red neck behaviour. Better procedure is to say thanks and thanks again and again and again to everybody who helped.

So many thanks to the Central Otago Four Wheel Drive Club who in co-ordination with Search and Rescue did a great job getting the people of the hill with the help of a couple of snow mobiles. Curtis Crawford and Brent Wilson did a particularly good job talking to the media and I am sure there are other members who put in hours of effort in helping in getting a great outcome.

If you haven't already had a look here is a couple of links that may be of interest so you can get an idea of amount of snow that is up there. Yep it's deep! Thanks to Heliview Flights for their great photos. <https://www.facebook.com/Heliview/> <https://www.tvnz.co.nz/one-news/new-zealand/bulldozer-way-retrieve-snow-trapped-vehicles-in-otago>



I also asked my Insurance Broker if they had a comment re insurance and they came back with this: Yes it has sparked interesting conversations – basically most motor vehicle insurance policies cover sudden accidental loss and loss is defined as physical loss or damage. These vehicles haven't suffered any physical loss or damage, they have merely been abandoned. This situation is very similar to cars trapped in parking buildings after the Christchurch earthquakes. They were completely intact and had not suffered any damage and therefore there was no insurance cover.

When it comes to the time when the vehicles are actually recovered, then insurance should cover any sudden accidental damage ((for example, if a branch fell on the vehicle) "Yep that's going to happen up there" comment from me)) however if there is gradual damage (for example, any damage caused by dampness or water seeping in) then this

is likely not covered as it is not a sudden accidental loss. Different insurance companies may take differing views and an insurance broker may be able to assist however, strictly speaking, most policies are unlikely to respond as far as I can see. I also note that there are also other policy terms and conditions relating to the use of the vehicle and reasonable care that might apply in various situations. Interesting I can see a lot of conversations happening between the Insurance company and the policy holders.

As I write this it's Sunday evening and the news has just come through that the vehicles are coming down. I really hope everybody has had a wee reminder about what can happen and a quote that I hadn't heard for years and was brought up at this year's conference while talking about health and safety comes to mind from the TV series Hill Street Blues - Sergeant Phil Esterhaus: Hey, let's be careful out there.



1 June 2016



NZFWDA President

Neville Dunton

P: 07 578 2689 ---- M: 027 446 5634 ----E: president@nzfwda.org.nz



President's Report NZFWDA AGM 2016

Firstly I wish to acknowledge and thank each and every one of the Executive for the commitment and good work each of them have contributed to NZFWDA.

I think it is often easy for folk to overlook the Executive are volunteers who offer to take on roles which oftentimes involves significant personal time commitment.

I have done a rather rudimentary analysis of time commitments over the past 12 months and have arrived at a rather surprising number; >2000 man hours just for NZFWDA, not including Executive commitments to Zones or Comps. I'm not announcing these numbers to frighten anyone from standing for office, rather I think it is vital that everyone appreciates just how much volunteer energy goes into NZFWDA business at an Executive level. To put this into perspective the time commitment is equivalent of 188 x 8 hour days; or an average of a little over one full fortnight of time commitment for each executive member per year.

This past year has been one filled with more challenges than might have been expected. Land access agreements seem always to be to the fore and this year has been no different but there have been some extra pressures with the enforced closure, by Regional Council bureaucracy, of the iconic Whaitawheta / Tairies Track near Waihi, the unexpected closure of 42 Traverse by DOC, the continued closure of Thompson's Track following massive slips in 2014, and difficulties with Maratoto access, just to name a few.

I consider land access to be our primary area of attention need; in simple terms, without access our sport and recreation ceases.

Over the past few years we have sorted some of the most glaring ambiguities in the Constitution and also clarified, by constitutional amendments, the status of various membership classes; individual,

family, and day member. These things now provide a strong platform for member clubs to appropriately engage with existing / renewing members as either individual or family, and to ensure that day membership is available for temporary or trial members. The underlying reason for these changes has been to ensure that everyone participating in NZFWDA sanctioned events is covered by our liability insurances. Arising from this, we have identified a need to protect Clubs and affiliated members from third party claims that might otherwise not be covered by our liability insurance. JH was formally engaged (at discounted legal rates) to produce a draft indemnity form for Club use. That document will be circulated shortly with covering notes as to applicability of use.

The elephant under the carpet this year has been the much heralded H&S Amendment Bill which has now passed into law as The H&S at Work Act 2015. An enormous amount of time has been committed, firstly to make submissions to the proposed Bill, and subsequently to try to interpret the legal imposition of the new Act on our sport and recreation. This is very much a moving feast of risk with little reward but we also know the new Act may further negatively influence our combined land access arrangements, particularly in respect to access to (working) farms. Given land access remains our number one focus, the Executive will continue to spend significant time and resources to try to find solutions around the impositions of the HSWA 2015.

Last AGM there was a call from members for additional risks to be covered by the NZFWDA insurance scheme. These involved possible accidental death cover and a review of offroad 4WD vehicle insurance. After receiving initial supportive responses we have most recently been advised that AON has declined to consider these requests in the context of our existing liability insurances. Whilst we are disappointed

AON cannot advance things their brokers have directed us to alternate providers of these insurances and we are reasonably confident a range of options will be able to be considered within the next several months including reviews of existing insurances which are presently available through Barley Insurance Services, and Barstow Insurance, both via Auckland 4WD Club.

From a financial perspective NZFWDA remains in good financial health; the FS for YE 31/3/2016 disclose reduced incomes but also reduced expenses from last year and whilst our actual result is an accounting loss of \$2,049 this includes non-cash depreciation of \$1,798 so our actual cash deficit for the year was just \$251. I'm happy to have that financial "soft landing".....

So, whilst this year we do not have any remits to consider, we will nonetheless need to remain focused on how we Nationally, and regionally via Zones, and locally via Clubs, retain, maintain, and sustain our various land access "rights". Our current view is we should strive for National agreements with national land owners such as DOC, and Zones and Clubs with some well considered recommendations around documentation for regional and local agreements. (Also, need for all Clubs to again be reminded about Incorporation to mitigate risk for Club executive, officers, and members)

Whilst it has personally been a rather busy year, I remain grateful for the continued opportunity to offer my personal commitment to the affairs of NZFWDA. My thanks for the input and support from each member of the Executive, I believe we have a strong, united, and committed Executive team and I recommend all for re-election. Thank you.

Neville Dunton
President, NZFWDA Inc



National Public Relations Officer



Roger Seymour

P: 04 586 2518 ---- M: 021 424 351 ---- E: pro@nzfwda.org.nz

National PRO Report May 2016

Health and Safety

Land Owners are now often requiring what is similar to signing in a visitor book on a work or office site. So a list of names and times who is on site may need to be provided to the landowner.

We are near completing a review of modern Health and Safety requirements and we will provide template documents to Clubs very soon. John Hickey is leading this important work and now assisted by Grant Purdie from CCVC in Wellington.

My comment about Health and safety is that no matter what the Executive provide, if the documents are not used by the Clubs as intended then your Health and Safety process will fail. Health and Safety process requires trip leaders to put pen to paper. There is no other easy way. Even if you do not have the templates then just use a book and write stuff down. If you are a trip leader or event organiser then write down names and dates and events and keep the book. Hopefully no one will ever want to see it but like they say "it is better to have it and not want it, then to want it and not have it."

Land Access

When I came to 4wd executive rolls at a Club level maybe 15 years ago, there was an attitude with some people in leadership roles at Club and National Executive levels that land access was a right, and that we must vigorously defend that right with demands and legal threats to land owners. Paper roads seemed to be a target. Paper roads that commonly went no-where, had woolsheds built across them, or in one case that I saw, a farm boundary fence built across it. A fence that seemed to have been there for 50 years or more. Some people in the 4wd community thought that it was the right way to attack these situations and gain our rightful access. I began to see that confrontation with landowners including Council bodies and DOC, was not working and would never work.

I watched a group of 4WD clubs spend 20 thousand dollars and take a City Council to court to gain access to a paper road that, after going through a boundary fence, ended 2 kilometres away at a cliff. The Clubs won the court case and gained

access to this paper road. To the dismay of local farmers, the 4wd people then went and drove the road, cutting a boundary fence, and generally going no place. Won the battle yes, but lost the respect of all the farmers in the valley, and of course lost access to all those farms. Dumb I thought. I went to see that land one time and was so embarrassed by what we had done I went away thinking I had to stop this madness. Some people justified it as setting a precedent, but I have never seen any evidence over the years to support this.

I have watched battles for land access get fought, and access won, only to have the roads closed for safety reasons. A win, no. Since I gained a position on the National Executive I have worked to gain the confidence of Councils and in particular DOC, who are the largest landowner in NZ. Confidence that makes the 4WD Association the preferred body to have track access partnership arrangements with DOC.

I have gained an important role on the DOC Recreation Advisory Forum. We are the go to body for DOC National office to ask advice and provide opinions to DOC on the management of recreation access to their land. I have developed strong relationships with management at DOC National Office.

I know that Auckland is under much land access pressure, and that we lose tracks for many reasons in the Auckland area, mostly because 75% of the population of NZ want to live and play all in the same small area. As Auckland grows, and we have less convenient places to go play, those most convenient places become more used and then over-used, and then people start chasing us away. Nothing will stop that problem, so it is more important that we create Nationally acceptable track management and maintenance arrangements with land owners. I say nationally acceptable because in the case of DOC this is very important. Local arrangements with DOC can work well until the people change, and then those arrangements may fail.

To this end we are working very hard with the DOC national office to create

a National track management policy. Your Executive firmly believe that Clubs signing contracts which include Manager Insures clauses are putting themselves at huge risk if something goes wrong. The Executive are pushing for DOC Insures contracts. A document that will be that go to document for all 4WD/DOC contractual agreements.

Recently I was able to set up a meeting with the DOC National Recreation Manager from Wellington. The meeting was held in Hamilton to make it possible for representatives from 4WD Northern Zone and National Executive to attend. We were pushing for 2 outcomes. One being for the association, through Northern Zone Clubs, to sign a 5-year management contract for Waitawheta track. The second outcome being a Nationally recognised document for similar arrangements elsewhere. The Association wishing to sign only DOC Insures contracts, as opposed to Manager Insures documents which have been passed around recently.

The meeting was extremely positive, with DOC stating that their preferred contract is a DOC Insures document. The meeting closed with signs of agreement possible for the opening of Waitawheta, and we are awaiting confirmation of that over the next 2 weeks.

I recognize that much work is done in Northern Zone trying to retain access to pressured tracks. But Northern Zone needs to recognize that the work we do in Wellington at National level is extremely important too, and that one end cannot achieve anything without the other end.

Our role and the respect achieved on the Recreation Forum is significant for continued solutions to DOC access issues. It has to be a team. Lone Rangers writing articles that claim the National Exec don't do enough are not only incorrect, but are also destructive, one eyed, selfpromoting, and typical of the confrontational manner which was used, and failed, in the past.

Roger Seymour
National Public Relations Officer

National Competitions Officer

Ron Sturme

E: compofficer@nzfwda.org.nz

I have summarized a brief overview of the 2015 /2016 Rally Season.

It was a hard fought battle between competitors, with any number of people still able to take the title in the final Round - but which was eventually won by Dan Cowper.

While all Clubs put on a very successful Round, there are a number of underlying issues. A pressing matter for our Sport is the struggle our host Clubs are having with holding events. The difficulty involved of obtaining appropriate land, labor, and sourcing finance, I believe, is squashing the enthusiasm of some Clubs. This is an issue that I have put to the whole rally fraternity to find a solution.

Safety this year has been a main focus, largely due to new OSH rulings which has put greater pressures on current standing procedures. Our sport is evolving and it is important that our safety rulings and procedures keep up with this development. Both trucks and drivers have

advanced, so it is intuitive that safety should too. This isn't an easy problem to quantify, or solve, thanks to the large amount of variability, which is now the norm in our Sport. As a Committee we have tackled these problems through key focus on primary issues and moving on once we feel it has been sufficiently addressed. Safety is something we should be continuously working on - we can always improve in this area. Adding key focus at each Round on aspects such as crowd control, fuel lines, under-seat protection, and perhaps roofing has allowed good progress, but as mentioned we will have to continuously build on our procedures; our aim is to stay ahead of an impending problem. It's important to not wait for the worst to happen before we react. As a Committee we rely on constructive input from Competitors, so any pressing safety concerns should be brought forward as soon as possible.

A major concern this season has been the seriousness of some injuries. We have had, of note, four serious back injuries

in four separate incidences. The Comps Committee has therefore actioned the Safety Design Team (SDT) in response to these incidences. The SDT are investigating the causes and identifying possible mitigating solutions. Examples are increasing the head clearance and possibly putting a solid roof on the cage above the competitors.

I have also asked both the outgoing and incoming Scrutineers to work on this, as they are all Engineers.

In relation to new Offices for the upcoming season, we have a new Scorer who is Jenny Samson. The Northern Zone Scrutineer is Glenn D'Arth and Central Zone Scrutineer is Wayne Buckthorpe. Other Officers remain the same.

Moving forward, I believe we have a good team and we look forward to the coming Season and challenges.

Ron Sturme
NCO



Southern Zone President

Russell Quin

P: 03 477 0004 ---- 027 222 4879 ---- E: szpresident@nzfwda.org.nz

Quite a year in the Southern Zone with most of the focus being on a National level. I am not aware of any major issues with land access and tracks. It is really pleasing to see that Clubs in the Otago Region have been liaising with DoC and the Partnership Rangers and three Clubs that I know of have carried out maintenance work on tracks and huts for DoC. In Dunedin there have been a couple of meetings with Simon (Partnership Ranger) and the dialog between us and him has meant that we should be able to continue to build relationships with other Rangers. It is interesting that there always seems to be changes happening within the DoC structure and this does not make it easy to develop good long term relationships with one officer. There also seems to be a lot of internal politics which does not help us either, however in saying this we have had no access issues that I know of and Clubs are encouraged to contact me if they do so we can contact the right people and ask why, especially if access has been available in the past.

Health and Safety is an ongoing issue. John Hickey the Northern Zone President has attended Seminars on behalf of the Association. We will keep you updated on progress. Access on to farms seems to be

an issue that Clubs are facing if wanting to go on trips on private land. There are documents available that will hopefully go on our web site which Clubs will be able to download and give to farmers if access becomes an issue. This is an evolving process and if you read Johns PRO report you will understand some of the frustrations we have had. I am hoping that this will be a top priority for the Association this year and we can get some clarity on this. Just this week we have first official notice from a landowner that access will be denied by any Organisation wishing to visit their land until they get clarification on the current legislation at what this entails in liability for them.

The same applies when running events. I know the Mainland Winch Challenge Committee are concerned that they have an effective plan in place for running their events. It is also important that Clubs who run Rallies, Mud Plugs etc. have procedures in place that will cover them. I have Several Health and Safety documents which I am happy to share with Clubs.

Clubs throughout our Zone continue to do their own thing – which is great. There are activities though which do bring other

Clubs or individuals together and it is encouraging to see these activities. Clubs are encouraged to use the NZFWD Web site to promote any events and articles to Trail Torque are always welcome.

We review the Insurance policies every year and continually ask our Insurance Brokers Aon if there is anything else we should or can cover ourselves for to protect us and members. They have told us that we have the most comprehensive cover available in New Zealand for our type of Organisation. We will again review this year.

Thanks to everybody who helped during the year especially to John McDonald who continues to be an advocate for the Association and a competent Public Relation Officer.

I am always available to speak to members and Clubs please do not hesitate to get in touch if you have any questions that you need answers too. If I can't sort them I will endeavour to find someone who can.

Russell Quin
Southern Zone President





NZFWDA Northern Zone President

John Hickey

Mobile: 0274 531 247 --- Home 09-630 4904 --- Email: nthzpresident@nzfwda.org.nz



NZ4WD National AGM Northern Zone President's Report for National AGM on 22 May 2016

It has been an interesting year as Northern Zone President:

1. There was an ongoing pressure in the North because of the large number of people who have Four Wheel Drive vehicles and the limited places we can go.

2. Taieri Road

(a) In June Ces Horan alerted DOC that the Taieri Road gates, closing off the track for the winter, had been removed. Subsequently they were found to have been cut up and thrown over the bank.
(b) Russell de Luca contacted Gene from Hauraki DOC about matters. I understand DOC tried to find out who is responsible.

3. Maratoto and DOC Agreement

(a) I received National Executive approval of the DOC Manager Insures Agreement. Because of the issues raised by the proposed Health and Safety Reform Bill (to be discussed separately) I amended the Agreement to try and take into account its possible provisions. I spoke to Nick Heslop, the Partnership Ranger for Hauraki Coromandel about the draft Agreement and then sent it to him for approval on 7 July 2015.
(b) Before the track was scheduled to open for the year Peter Vahry contacted DOC, he asked for a meeting and then told me and Tony Burgess about it. We were not able to attend the meeting at short notice and asked for it to be postponed. Peter went ahead and had the meeting. I understand that Peter asked DOC for permission to use diggers on the track. DOC then decided not to open the track for the summer.
(c) I then spoke to Gemma White, DOC Hauraki Partnership Manager. She told me that Peter Vahry had been seeking agreement for use of earth moving equipment and because of recent changes to the Health and Safety Legislation DOC was very concerned about such matters. DOC is also concerned about the issue of Kauri Dieback and the need to be careful to not spread the disease. As a result of my discussions, DOC agreed shortly before Christmas that the Track could be opened for the summer on the basis that:
(i) There are no earth works;
(ii) We will try and resolve a Management Agreement.
(d) I have passed on DOCs concerns to zone members.
(e) Steve Morley prepared new signs and a new money box to be installed.
(f) I have spoken again to Gemma White, DOC again about an Agreement with DOC for Maratoto. Gemma has been promoted however this project is one of

those that she is trying to finish off with the agreement of the new Manager Ravi Holzapfel and I have sent her a copy of the DOC Insures Association proposed agreement for comment.

(g) I intend proposing the less onerous DOC insures contract on the basis that if earth works are required we will seek permission – at the zone committee meeting we should discuss this.

4. The National Constitution has been amended to incorporate the remits passed at the AGM and was signed and then submitted to the Registrar for Incorporated Societies.

5. The Health and Safety Reform Bill

The Health and Safety Reform Bill came back before Parliament. We were alerted to the Bill after its first reading. No one should doubt that legislation is needed for mining and forestry but the question is should legislation needed for these two industries also be applied to everyone else?

(a) There were concerns that the Bill was not just for businesses but includes what are called PCBUs which includes "an undertaking" and so can include clubs (whether registered incorporated societies or not) and also officers of clubs.

(b) I lobbied various political parties on behalf of the Association and I hope at least some of you lobbied your local MP and Ministers to exclude sporting organisations (on the same basis as the old Adventure Activity Regulations).

(c) The Act has now been passed and while there are some limited exemptions, e.g. for non working parts of farms, the Act may affect four wheel driving.

6. Muriwai

You should be aware that in September 2015 four young men were killed in a Pajero at Muriwai Beach:

(a) I was questioned by Paul Henry on his Breakfast show and TVNZ for TV One midday news.

(b) Tony Burgess, Northern PRO and I were then asked by Seven Sharp to take them up the beach in my Camel Land Rover V8 and it was filmed driving up and down the beach and Tony was interviewed.

(c) Radio New Zealand's National Programme, Check Point, also interviewed me. That interview seemed to be focused on the issue of permits for the beach.

(d) Tony Burgess then contacted me because Fairfax Media asked us to provide them with transport for a Memorial Service. Peter Vahry of Auckland Club and former Zone President Ken Burrows, also a former President of the Land Rover Club and I turned up with three vehicles. We were able to provide transport for some of the family. Ken and I then went to

the Muriwai Surf Club and helped in the kitchen.

Poutu

7. There was an Auckland Four Wheel Drive Club trip in which I understand a child was injured. I understand that the driver is being prosecuted. I have contacted the club and asked if we can assist but I have not heard anything further about the incident.

Waitawheta

8. (a) Russell de Luca (former Zone President and 2015/2016 current Vice President) and Steve Whitton of King Country Four Wheel Drive club spent a considerable amount of time working to try and satisfy the Waikato Regional Council about this track. Part of the land is owned by DOC and part by the local District Council. The Regional Council issued a Stop Notice and Russell and Steve have been working through trying to resolve matters. Just when Russell thought everything was sorted a change of staff at Waikato Regional Council has meant that they are now taking a very strict line on the basis that, as I understand matters, if Four Wheelers use the track they are likely to cause run off into the local water table.
(b) There has been a meeting with DOC, Hamilton on 11 May 2016 attended by Russell, Steve Whitton, Steve Morley, Neville Dunton, Roger Seymour, Tony Burgess and me.

42 Traverse

9. Apparently there was an incident with a side by side which resulted in the track being closed until 1 December 2016. DOC has closed the track and is not agreeing to remove the bollards to enable track maintenance. Taupo Clubs are trying to negotiate matters with DOC. Apparently the current DOC Area Manager is hoping to set up something like Tect Park.

Ngaroma (Pureora)

10. The King Country 4 x 4 Club signed a Memorandum of Understanding and a Management Agreement. I consider the form of Management Agreement that is signed is onerous but that is a matter between the Club and DOC.

Kariori

11. Steve McMinn reports that those wishing to use the forest have to first attend a Health and Safety evening. It is unclear whether a Club representative may be able to attend on behalf of a Club to get access for a Club.

Health and Safety

12. Health and Safety is an ongoing issue. On behalf of the Association I have attended an Auckland District Law Society

seminar and a New Zealand Law Society conference on the Act. I am reporting to the Executive and will be trying to update you.

Association and Volunteers

13. The Executive work very hard and I am conscious that often what we do is not always seen. I know Russell de Luca together with Steve Whitton spend a lot of time on Waitawheta. Tony Burgess is often out promoting the Association, for example I am aware that he has recently

been to Maratoto and talked to people using the track. Steve Morley and Ces keep working on Maratoto. Eileen Austin is a very efficient secretary:
(a) Thank you to everyone who has helped over the year including those mentioned in my report.
(b) Thank you also to National President Neville Dunton who has supported me and Roger Seymour for his work in Wellington.
(c) There are many others in the zone that helped out I would like to acknowledge all of them and thank them.

Northern Zone AGM on 16 April 2016

14. At the Northern Zone AGM on 16 April 2016 the following were elected:
(a) Northern Zone President: Me (John Hickey)
(b) Northern Zone Vice President: David Brown
(c) PRO Tony Burgess
(d) Secretary/Treasurer Eileen Austin

Thank you all.
JOHN HICKEY
Northern Zone President



Central Zone President Max Wheatley

E: czpresident@nzfwda.org.nz

CZ Presidents report

Off road

Not a great deal happening there, just a day out with CCVC at conference.

NZFWDA Conference.

A few weeks back I attended the National Conference in Wellington. A little different this year in that Saturday was a full day trip leaving at 0930 and getting back 1830, a little later than intended. This trip took us up into the Southern end of the Tararua Ranges through a private 4WD park that has been part of the Wellington 4WD scene for close to 40 years, RallyWoods. After lunch in the field we had an early evening meal at the Orange Hut in the Akatarawa Forest Park. NZFWDA has contributed to the development of this hut which was built by ARAC (Akatarawa Recreational Access

Committee). ARAC continue to develop this site working with the Greater Wellington Regional council to ensure continuing access for the enjoyment by many, check out their website at <http://arac.org.nz/>

It was still disappointing to see the small number of people that attend conference. The National Conference held annually is your chance to talk direct to the Executive as well as learning something new and meeting old friends and hopefully making some new ones. Make the effort to be there next year.
Thanks to CVCC and all their helpers that made the Conference a great weekend.

4WD Show.

The annual Central Districts 4WD Show is coming around soon on the 3rd of July, same format as last year. This year have

\$500 for first prize, \$250 for second and \$100 for third so get your thinking cap on and book your space now.
Contact the Club for your Club or trade space, <http://centraldistricts4x4.co.nz/Swap+Meet?src=nav>

In the workshop

Not much to report here either. The P38 is going fine and I am slowing working my way through the oil leaks, most of which come down to poor workmanship. Next up are the brakes, the P38 does not have a vacuum booster but an electrical pump to pressurise the brake fluid. Then it will be time to take the dash out and resolve the leaking heater core and the distribution servos.

See you next issue. Max.

4x4 Events/Trips/Runs

Email your events to editor@nzfwda.org.nz

All due care has been taken entering these details, NZFWDA cannot take responsibility for any changes or inadvertent inaccuracies. Potential participants should contact the event organiser.

3 JULY 2016

CENTRAL DISTRICTS 4X4 SHOW at Manfeild Park, Feilding. Come see all the 4x4 stuff in one place, from winches to oil, tyres and tools, lighting and clothing, there will be recovery equipment including spades to dig yourself out! Displays of new or second hand 4x4s, professional advice on site and a wide range of off-road vehicles. More information: centraldistricts4x4.co.nz or www.facebook.com/events/789757834462821/

9 - 10 JULY 2016

Round 2 - MAINLAND SUPERWINCH SERIES. Christchurch. For more information email Vicky.mainlandwinching@gmail.com

12 - 13 AUGUST 2016

Round 3 - MAINLAND SUPERWINCH SERIES. Blenheim, event is at Mt Riley Farm. Friday night stages, Saturday day stages. For more information email Vicky.mainlandwinching@gmail.com

12 - 13 - 14 AUGUST 2016

NZ1 Challenge - TOP OF THE SOUTH, Round 3 and 4 of the MAINLAND SUPERWINCH SERIES together becomes NZ1. For more information email Vicky.mainlandwinching@gmail.com

14 - AUGUST 2016

Round 4 - MAINLAND SUPERWINCH SERIES. Nelson, event is in Richmond. Sunday 10 day stages. For more information email Vicky.mainlandwinching@gmail.com

16 - 17 SEPTEMBER 2016

Round 5 - MAINLAND SUPERWINCH SERIES, Timaru, venue to be confirmed. Friday night stages, Saturday day stages. For more information email Vicky.mainlandwinching@gmail.com

14 - 15 OCTOBER 2016

Round 6 - MAINLAND SUPERWINCH SERIES, Dunedin, event held at Ceder Creek site. Friday night stages, Saturday day. For more information email Vicky.mainlandwinching@gmail.com

12 NOVEMBER 2016

Round 1 - National 4x4 Trail Series. Waikato. For more information visit: www.nz4x4trials.co.nz

3-4 DECEMBER 2016

Round 2 - National 4x4 Trail Series. Bay of Plenty. For more information visit: www.nz4x4trials.co.nz

11-12 FEBRUARY 2017

Round 4 - National 4x4 Trail Series. Wellington. For more information visit: www.nz4x4trials.co.nz

11-12 MARCH 2017

Round 5 - National 4x4 Trail Series. Taranaki. For more information visit: www.nz4x4trials.co.nz

15 APRIL 2017 (EASTER)

Round 6 - National 4x4 Trail Series. Manawatu. For more information visit: www.nz4x4trials.co.nz

APRIL 2017 (EASTER WEEKEND)

WEST COAST 4X4 CHALLENGE. See page 26 for details.

Northern Zone Clubs



4X4 Challenges NZ Inc.

PO Box 37 143, Parnell, Auckland
President Tim Fensom : 027 487 1733
president@4x4challenges.org.nz
Secretary Ashley Lucas : acl@xtra.co.nz



Auckland Four Wheel Drive Club Inc.

PO Box 6712 Wellesley St Auckland
President Jeremy Walker :
president@auckland4wd.org.nz
Secretary Tariq Wasim :
secretary@auckland4wd.org.nz
Meet Third Monday of every month at 8pm,
 Vintage Car Club, Fairfax Ave, Penrose.
auckland4wd.org.nz

Bay of Islands 4x4 Club

PO Box 443, Kerikeri
President Andrew Graham
Secretary Martin Rivers : 021 293 7215 : mart.rivers@gmail.com



Bay of Plenty Four Wheel Drive Club

P.O.Box 2300, Tauranga
President Zane Edlin : 021 936 535 :
bop4x4club@gmail.com
Secretary Ashleigh Gaudion : 027 726 6658 :
bop4x4club@gmail.com
Meet Tauranga Sport Fishing Club, Sulphur
 Point, Tauranga on the first Thursday
 of each month at 7.30 pm
www.bop4wd.org.nz



Counties 4 Wheelers

PO Box 72 1394, Papakura
President Chris Weaver :
cjweaver@vodafone.net.nz
Secretary Lorraine Chung : 027 242 5968
Lorraine.Chung@asb.co.nz



Cozzie Four Wheelers

PO Box 4133 Hamilton
President Dom Barnes : 027 823 3018
dom@gymcare.co.nz
Secretary Andrew Boulton :
ab@powerprojects.co.nz
Meet Third Tuesday most months, 7.30pm
 Hamilton Cosmopolitan Club,
 Claudelands.

East Coast Four Wheel Drive Club

PO Box 2180, Gisborne
President Rod Dear : 06 868 4882 : rjandradear@hotmail.com
Secretary John Saxby : 027 441 9985



Eastern Bay Twin Diff Club Inc.

PO Box 588, Whakatane 3120
President Ron Sturme : 027 226 7915
r.dsturme@xtra.co.nz
Secretary Warwick Farmer : 027 307 7919 :
farmerwg_71@hotmail.co.nz
Meet First Wednesday of the month,
 The Edgumbe Cosmopolitan Club.

EBTDCLUB@gmail.com



Geyserland 4WD Club

PO Box 2085, Rotorua
President George Estcourt : 021 338 312
president@geyserland4wd.co.nz
Secretary George Estcourt : 021 338 312
secretary@geyserland4wd.co.nz
Meet First Wednesday of every month
 (except January) 7.30pm at "The Great
 Kiwi Ale House".
www.geyserland4wd.co.nz

Hamilton Districts 4 Wheel Drive Club.

President Ken Bowater : 027 495 8989 : president@hd4wd.co.nz
Secretary Graeme Pennefather 021 288 1060 :
secretary@hd4wd.co.nz
www.hd4wd.co.nz

Kaitaia 4WD Club Inc.

PO Box 125, Kaitaia 0441
President Greg Hodgson : 09 409 4167 : greg.barb@xtra.co.nz
Secretary Dave Currie : 09 406 7518
Meet First Monday of the month, 7pm, Kaitaia RSA.
kaitaia4x4club@hotmail.com



Kauri Coast 4WD Club

PO Box 18, Dargaville
President Ron McCloy : 09 405 8316 : 021 063 4623
president@kauricoast4wdclub.co.nz
Secretary Sam Whalley : 021 2222 2370 :
info@kauricoast4wdclub.co.nz
Meet Second Wednesday of the month at
 7.30pm Northern Wairoa Boating Club

www.kauricoast4wdclub.wikispaces.com



Land Rover Enthusiasts Club (Rotorua)

PO Box 2113, Rotorua 3040
President Colin Parr : 027 499 6023
partons@xtra.co.nz
Secretary Allan Hoffman :
allan.hoffman@govt.nz

www.lrerot.wikispaces.com



Land Rover Owners Club (Auckland)

PO Box 303-006, Auckland 0751
President Jeremy Bleakley : 021 289 7009
Jeremy@albanyins.co.nz
Secretary Neil Abbott : 021 281 1509
neil.abbott@manumarine.com
Meet First Monday of the month, 7.30pm
 The Normanby Pub, Normanby Rd, Mt Eden
www.lroca.org.nz



Manukau Four Wheel Drive Club Inc.

PO Box 75-199, Manurewa
President Bernie Konz : 09 236 6856
Secretary Joy Browne : 09 238 7298
Meet First Tuesday of month (except Jan),
 7.30pm at South Auckland Car Club,
 1R Great South Rd, Papakura.

www.manukau4wd.org.nz



Northland Family Four Wheelers

37 Tui Glen Place, Glenbervie RD3 Whangarei 0173
President Colin Thorburn
nglasgow300@gmail.com
Secretary Brett Hogan : 09 437 7438
onehogan@xtra.co.nz
Meet Second Thursday each Month,
 clubrooms in Glenbervie.
www.nffw.net



Norwest OHV Club Inc.

PO Box 171, Kumeu Auckland
President Ben Blyth
president@norwestohv.org
Secretary Dan Farley
secretary@norwestohv.org
Meet Second Monday of the month, 7.30pm
 Paddy's Bar, Shamrock Drive, Kumeu.
www.norwestohv.org

NZ Jeep Club

c/- 196 Tuapiro Road, RD3 Katikati, 3170
President Mark Spalding : 09 536 7288
Secretary Sandra Cohen : 07 549 1823 : scohen@xtra.co.nz



Port Valley 4x4 Club

President Dan Barnett : dan@drpc.co.nz

Northern Zone Clubs continued...



Rodney Off Road Club Inc.

32 Scott Rd, Stanmore Bay, Whangaparaoa, 0932

President Jimmy Kiddie : 027 222 6366

jimmycando@xtra.co.nz

Secretary Troy Prince : troymarcia@gmail.com

Meet Second Wednesday of every month,
8pm at the Wade Hotel, Silverdale

www.rodneyoffroadclub.co.nz

rodneyoffroadclub@gmail.com



Shore 4 Wheelers Inc.

PO Box 100-404, NSMC, Auckland

President Phil Clark : 021 848 429

phil@force4.co.nz

Secretary Laurence Fear
laurancefear@hotmail.com

Meet Second Wednesday of the month 7pm
at North Shore Rod & Customs Car
Club, 4/26 Hillside Rd, Glenfield.



South Waikato 4WD Club

C/- 211 Overdale Road, RD3, Putaruru 3483

President Craig Tomalin : 027 490 6785

Secretary Phil Hobart :

Meet First Wednesday of each month
7.30pm at the Tirau Hall.

Sulphur City 4 Wheelers

c/- PO Box 10085, Rotorua 3046

President John Farrow : di.farrow@clear.net.nz

Secretary Keith Spicer : kwspicer@ihug.co.nz



Taupo 4WD Club

PO Box 457, Taupo

President Peter Kelly : peterkellynz@gmail.com

Secretary Matthew Burton : 021 024 10351 :
floatingkiwi@xtra.co.nz



Thames Valley 4WD Club

C/- K. Barriball, Waitakaruru, R.D.6, Thames

President Rob Pettifer : 021 902 309 :

rpettifer@gmail.com

Secretary Keith Barriball : 07 867 3330
buddog@ihug.co.nz

United 4WD supporters

C/- Almara, RD 4, Albany, Auckland

Secretary Carmen Mills : 09 426 8830 : u4wd@nzfwda.org.nz



Waikato Four Wheel Drive Club

PO Box 9313, Hamilton

President Greg McDell : 07 824 6640 or 027 242

7405 : president.waik4wdclub@gmail.com

Secretary Chris McDell : 021 440 871 :

secretary.waik4wdclub@gmail.com

Meet Second Thursday of every month 8pm
at the Scouting Hall on Storey Ave.



Whangamata 4x4 Club

PO Box 299 Whangamata

President Graeme King

Secretary Kris Glucina

Meet Second Tuesday at 7:30pm at the
Whangamata Club.

www.whangamata4x4.org

Whangamata4x4@gmail.com



Whangarei 4WD Club

P.O.Box 1850, Whangarei

President Colin Jaggard : 09 437 1816 or

0276548882 : jag5@ubernet.co.nz

Secretary Kay Ludgate : 09 435 5518 :

secretary@whangarei4x4.org

Meet Second Tuesday of month at 7.30pm
Kamo Club.

www.whangarei4x4.org

Wilderness Ridge Riders 4WD Club

PO Box 101469 NSMC Auckland 0745

President : Quentin Smith

Secretary : Barbara McMinn : 027 240 7939 : jeepinnz@xtra.co.nz

The NZFWDA Executive are volunteers who administer the Association. Divided into three regional zone committees - Northern Zone (North Cape to Taupo), Central Zone (Taupo to Wellington), Southern Zone (the entire South Island) and a Competition Committee.

THE NEW ZEALAND FOUR WHEEL DRIVE ASSOCIATION

- VALUES THE HIGHEST SAFETY STANDARDS BEFORE, DURING AND AFTER ALL 4WD ACTIVITIES.
- ENDORSES RESPECT AND CARE WHILE PARTICIPATING IN 4WD ACTIVITIES IN THE ENVIRONMENT.
- ACKNOWLEDGES THE CONTRIBUTION OF ITS MEMBERS AND THEIR VALUES.
- VALUES AND RESPECTS LAND OWNERS AND LAND USERS.
- ENCOURAGES NON- DISCRIMINATION OF ALL PARTICIPANTS.

Advertising in Trail Torque

Quarter Page(94mm x 135mm) \$150

Half Page(190mm x 136mm) \$300

Full Page(190mm x 278mm) \$600

These prices are per edition of NZFWDA Trail Torque and do not include GST. Invoices are sent yearly and bookings must be made for a minimum of one year.

Advertisements must be received copy ready and sent as jpeg or pdf to: Bobbie Kincaid: editor@nzfwda.org.nz

- All advertising ("advertising") in Trail Torque is on the basis that
1. The Editor at the Editor's discretion may accept or reject any advertisement without giving any reason.
 2. The New Zealand Four Wheel Drive Association ("the Association") does not endorse or recommend or warrant any advertiser or advertising. The Association at its absolute discretion reserves the right to at any time accept or refuse any advertisement or advertising.
 3. The Advertiser must ensure and warrants to the Association that all relevant laws and advertising guidelines are observed for the advertising.

Central Zone Clubs



Capital Cruisers 4WD Club

PO Box 38725, Wellington Mail Centre

President : Amelia Dale : Amelia.Dale@MeridianEnergy.co.nz

Secretary : Marty Green : marty@activegroup.co.nz :



Central Districts

PO Box 130 Feilding

President Trevor Hendra : 06 323 3458

trevor.hendra@gmail.com

Secretary Roger Bird : 06 328 5881

bird@parklee.co.nz

Costa Plenty 4x4 Club

c/o P O Box 130 Feilding 4740

President Laurie Goldfinch : 027 246 6133

Secretary Nicki Andersen : costaplenty@hotmail.co.nz



Cross Country Vehicle Club (Wellington) Inc.

PO Box 38-762, Te Puni, Wellington 5045

President Neil Blackie : President@ccvc.org.nz

Secretary Paul Sadlier : secretary@ccvc.org.nz

Meet Second Wednesday of each month at 7.30pm Petone Workingmans Club, Udy St.

www.cvc.org.nz



Desert Defenders Off Road Club

President : Robert Stout : 06 385 9435

rdpjstout@gmail.com :

Secretary : Kandy Mott : 06 385 8090

kandy@motts.co.nz :

Meet @ Stout's or Motts.

<https://www.facebook.com/DesertDefenders4wd>

Featherston Family 4x4 Club

c/- 3 Donald Street Featherston 5710



Feilding 4x4 Club

C/- 39 Seddon Street Feilding 4702

President Myles Norris

Secretary John de Burgh : jdeburgh@ihug.co.nz

www.feilding4x4.org



Hawkes Bay 4WD Club

PO Box 1423 Hastings

President John Jones : 06 877 5868

jandhjones@xtra.co.nz

Secretary Max Charman : 06 844 2658 or

027 444 7734 : secretary.hb4wdclub@gmail.com



King Country 4WD Club

11 Waitete Road, Te Kuiti.

President Jeff Clarke : 07 847 7308 :

jeffc@ihug.co.nz

Secretary Jenni Templeton : 07 878 7823 :

ijtempleton@xtra.co.nz

www.kc4wd.co.nz



Kiwi 4x4

President Cindy de Giorgis :

kiwi4x4nz@gmail.com

Secretary Matthew Stunnell

secretary@kiwi4x4.org.nz

www.kiwi4x4.org.nz

Levin 4WD Club

C/- 32 Greenwood Boulevard, Otaki

President Paul Shivan : 04 904 6872 : pshivan@gmail.com

Secretary Ken Douglas : 027 530 2614 : ken.douglas@xtra.co.nz



Manawatu 4WD Club

PO Box 5176, Terrace End, Palmerston North

President Phil Shailer : 021 130 7913

rotordogg@hotmail.com

Secretary Bruce Gilmore : 06 323 1119

gilmore@crosslot.com

Meet Third Wednesday of month at 7.30pm

Awapuni Community Centre, Newbury St, Palmerston North

www.m4wdc.org.nz



Mt Egmont 4 Wheel Drive Club Inc.

PO Box 8014, New Plymouth

President Rowan Huckstep : 027 480 3097

Secretary Elle Newman : 06 756 8673

elle.moratti@hotmail.com

Meet Second Wednesday of month,

7.30pm at the Inglewood Club.

egmont4wd.co.nz



Offroad Wairarapa 4x4 Club

PO Box 405, Masterton 5840

President Gavin Oakly : 06 377 3862

Secretary Mike Rolls : 06 370 9328

mikeandlizrolls@xtra.co.nz

Meet Second Tuesday of month (except Jan)

at 35 Perry Street, Masterton 7.30pm

www.orw.org.nz



Taranaki Family 4x4 Club

511 Mangorei Rd, New Plymouth

President Cameron Richardson :

president@naki4wd.org

Secretary Matt Adkins : exec@naki4wd.org

Meet Last Thursday of every month at members home, contact Secretary.

www.naki4wd.org



Taranua 4WD Club

C/- 20 Pukerua Beach Road, Pukerua Bay.

President Phil Barnard : phil.barnard@xtra.co.nz

Secretary Stuart Barton : stuart.barton@clear.net.nz

Meet Second Tuesday of every month

7.30pm at Paraparaumu RSA

www.taranua4wd.org.nz



Twin City Four Wheel Drive Club

PO Box 5137, Greenmeadows, Napier

President Graham Neale : 021 949 842 :

graham.nealr@wrcdevelopments.co.nz

Secretary Graham Brooker : 027 327 8683

Meet Second Wednesday of each month at

7.30pm, Taradale RSA

www.twincity4x4.co.nz



Valley 4WD Club

13 Lemonwood Grove, Maungaraki

President Mark Stockler : 04 4796849 : Mark.msr@xtra.co.nz

Secretary Mark SKID Pincock : 027 241 7757 :

skiddynz@live.com

Wairarapa Four Wheel Drive Club

PO Box 792, Masterton

President Gavin Oakly : 06 377 3862

Secretary Gail Smith : 06 379 8334 : gail@justphotosonline.com

Meet Last Tuesday of every month 7.30pm at the Masterton

Cosmopolitan Club.



Wanganui 4WD Club

PO Box 973, Wanganui

President Paul Chapman : 0274 549 0054 :

paul@dmlconstruction.co.nz

Secretary Sandra Sarginson : 06 343 7041

sandra.warren@xtra.co.nz

Meet First Tuesday of month, 7.30pm

Wanganui Race Course Purnell St

Wellington Family 4x4 Club

c/- 38 Bracken Rd, Newlands, Wellington 6037

President Marcus Steeneken : 021 439 183 : president@wf4x4c.org.nz

Secretary Tom Lo : 021 236 1630 : secretary@wf4x4c.org.nz

<http://wf4x4c.org.nz>

Wellington Jeep Club

PO Box 38203, Wellington Mail Centre

President Andrew Gee : agee@xtra.co.nz :

Secretary Tom Lo : 021 236 1630 : tswlo@rocketmail.com



Windy City Off-Roaders Inc.

c/o Howat Engineering 10 Horlor street,

Naenae, Lower Hutt 5011

President Mark Pincock (Skid)

skiddynz@live.com

Secretary Brian Hutchinson : 04 564 2699

brianhutch1@hotmail.com

Southern Zone Clubs



4X4 Events Inc

PO Box 13893 Christchurch 8140
President Craig Fraser : 027 354 6466
Secretary Andy Reeves : 027 699 1916 :
 ang.reeves.nz@gmail.com
Meet Fourth Thursday of month 7.30pm
 at Papanui RSA, 55 Bellvue Ave

www.4x4events.co.nz

Central Otago 4WD Club

P.O Box 314 Alexandra 9340
President Curtis Crawford : 03 446 9068 : co4wdc@gmail.com
Secretary Neil Connelly : connelly@xtra.co.nz

Clutha 4WD Club

P O Box 22 Balclutha 9240
Secretary Michael Sutherland : 027 446 5070
 michael.sutherland@farmside.co.nz



Land Rover Enthusiasts Club (Dunedin)

President Noel Harper : 03 454 4816 or
 021 454 481 : landibits@gmail.com
Secretary Suzanne Bell : 027 489 0584
 suzannev.bell@gmail.com
Meet Second Wednesday each month

www.lrec.co.nz



Landrover Owners Club (Otago) Inc

PO Box 47 Dunedin
President Michael Adam : 03 454 5467 or
 027 226 5257 : lisa.michael@clear.net.nz
Secretary Garry Beckingsale : 03 489 0292 or
 027 589 0292 : g.dbeckingsale@xtra.co.nz
Meet First Wednesday of the month
 7.30pm at Hurricane Rodders Inc
 51 Victoria Rd, Dunedin

www.lroco.com



Marlborough 4WD Club

PO Box 519 Blenheim
President Tony O'Donnell : 021 960 636 :
 antonyodonnell@ihug.co.nz
Secretary Neil Blackie : 027 510 9801 :
 blackie.neil@gmail.com

www.marlborough4x4club.weebly.com



Mid-Canterbury Four Wheel Drive Club Inc.

PO Box 327 Ashburton
President Stan Van Heeswyck : 027 555 8855
 president@ash4x4.co.nz
Secretary Michelle Ewart : 03 303 0855 :
 bulltahr@gmail.com
Meet Last Thursday of the month, 8pm at
 Club Rooms, Tinwald Domain,
 Maronan Rd, Ashburton.

www.ash4x4.co.nz



Nelson 4 Wheel Drive Club Inc.

PO Box 228 Nelson 7040
President Gordon Jackett: gordon@4wdnz.net
Secretary Alf Russell : alf@4wdnz.net
Meet First Wednesday of the month at
 Suburban Club, Tahunanui 8 pm.
 (except January)

www.4wdnz.net

Otago Recreational 4WD Group

12 Byron Street, Mornington, Dunedin 9011
President Graeme Thompson : 027 483 4285
 Graeme.Thompson@otagodhb.govt.nz
Secretary Greg Carroll : 027 415 3921: info@or4g.org.nz

www.or4g.org.nz



Shotover 4WD Club

PO Box 1503, Queenstown
President Nick Hazlett : 021 176 0766
 president@shotover4wdclub.co.nz
Secretary Leigh Carppe
 secretary@shotover4wdclub.co.nz
Meet First Wednesday of the month
 7.30pm at St John Ambulance
 Rooms, Douglas St, Frankton,
 Queenstown.

www.shotover4wdclub.co.nz

South Island Deaf 4x4 Club

c/- 6 Bellina Place Broomfield, Christchurch
President John Witchall : 021 048 5349
 s.i.deaf4x4club@hotmail.com
Secretary JoAnne Williams
 s.i.deaf4x4club@hotmail.com



South Island Niva Drivers Association (SINDA)

PO Box 34 Christchurch
Secretary Greg Barclay :
 tzoperations@coincascade.co.nz
Meet Third Wednesday of the month at
 Papanui RSA, Harewood Road,
 Christchurch at 7.30pm

LIFE MEMBERS OF THE NEW ZEALAND FOUR WHEEL DRIVE ASSOCIATION.

Awarded 2016 - John & Nonnie Cowper

Awarded 2015 - Ces Horan

Awarded 2015 - Kath Jaggard

Awarded 2011 - Peter Vahry



Northern Zone President John Hickey and Ces Horan



Kath Jaggard and Northern Zone President John Hickey

Kids Page

Can you spot the six differences?



EGG in a Bottle



Like magic, you can put an egg inside a bottle.
First get permission to use kitchen equipment and eggs.

YOU WILL NEED

- one peeled, hard-boiled egg
- plastic or glass bottle with an opening slightly smaller than the egg
- large bowl of hot water
- large bowl of ice water

Here's how

1. Put the bottle in the bowl of hot water for about five minutes.
2. Move the bottle to the bowl of ice water. Wet the egg and place it pointed side down in the bottle opening. As the air inside the bottle cools, the egg will slowly move into the bottle.
3. To remove the egg, hold the bottle upside down so the egg is near the opening. Blow hard into the bottle with your mouth tight against the opening. Point the bottle away from you: The egg flies out!

Why? Hot air expands. Cold air contracts. When the air inside the bottle is heated, the molecules, or tiny air particles, inside the bottle spread out, increasing air pressure. As the air in the bottle cools, the air pressure decreases. The greater outside air pressure pushes the egg into the bottle. Blowing into the bottle raises the air pressure again. The air and the egg rush out of the bottle

In the 4x4 Game:

Use your name as your buzzer to answer.

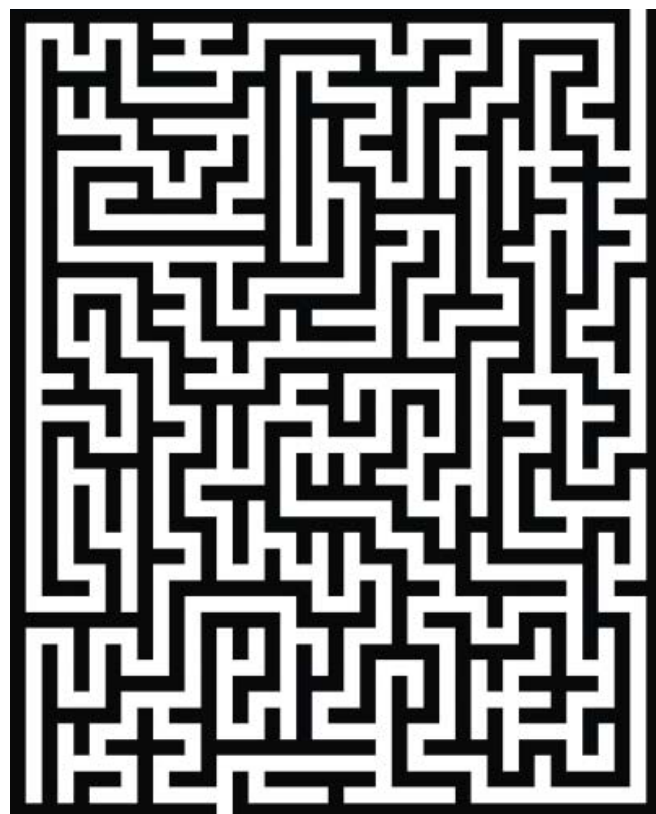
One Person asks if you know the Answer to.....

Questions (made from the first line of a Nursery Rhyme.

Mary had a little??? Old Mother Hubbard went to???

There was an Old Lady who???)

Can you find your way through?



DIFFERENCES: 1. Name on Banner changes, 2. Gumboots disappear, 3. logo on jacket, 4. writing on the wall, 5. Pink on Jacket, 6. Night turns to dusk.

WESTCOAST 4x4 CHALLENGE

Over

4 Hundred Kms

Through

4 Towns

Across

4 Days

In your

4 x 4

PAPAROA RANGE

EASTER
Victoria
Forest Park
2017

A circuit of
the Paparoa
Range with scenic
& tuff route options

Entries Open 1st Nov

More details to follow

Contact: szpro@nzfwda.org.nz

