



This issue: SEPT/OCT/NOV 2014
Next issue December / January / February 2015

Established in 1974, the objective of the Association is to further and improve Four Wheel Drive activities in New Zealand.



As a member of the NZFWDA, you become an integral part of this effort to ensure that present and future generations can continue to enjoy our country in four wheel drive vehicles.



IN THIS EDITION

At the Central Zone Club Truck Challenge.

Road Closures.....	2
General News.....	2
Brass Monkey - John McDonalds notes	3
Benefits of being a Club	8
Central Zone Club Truck Challenge.....	10
What is a Club Truck?.....	12
NZFWDA Executive Reports.....	14-17
Northern Zone Clubs	18
WIN a pair of TRED Total extraction and Recovery device	19
Central Zone Clubs.....	20
Southern Zone Clubs.....	21
Supporting the Community.....	21
Events Calendar	22
It wasn't that long ago.....	23
For Sale	23
4x4 Event Results - Superwinch Mainland Winch Challenge Rnd2 & Rnd3, Cust Crusades, Force4 King of the Palace Winch Challenge	24
Kids Page	25

GENERAL NEWS

General Business discussed at the Executive Meeting 15 June 2014 - SKYPE

- Database
- Website
- Trail Torque

Next Skype meeting 31st August.



Trail Torque is produced four times a year and delivered via the NZFWDA Membership email database.

DECEMBER/JANUARY/FEBRUARY 2014

Deadline for material - 21st November 2014

Check your inbox: - 5th December 2014

MARCH/APRIL/MAY 2015

Deadline for material - 20th February 2015

Check your inbox: - 6th March 2015

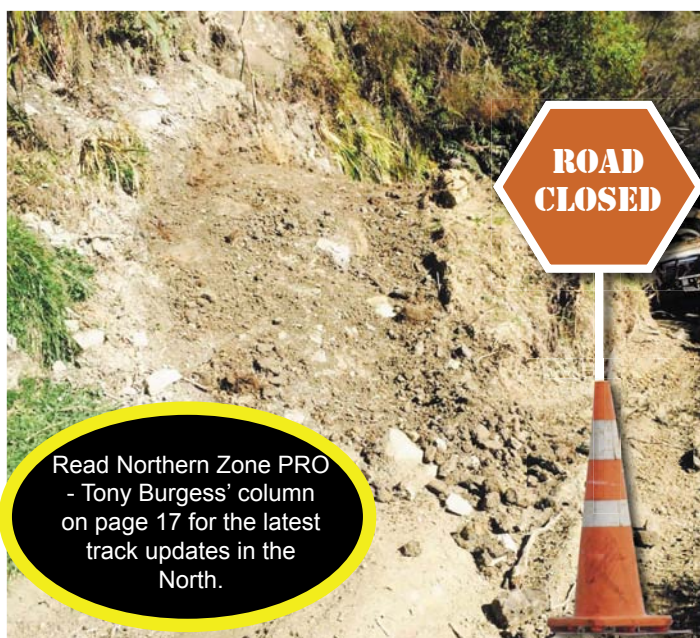
NZFWDA Executive

President	- Neville Dunton
National PRO	- Roger Seymour
Secretary	- Wendy Johnson
Treasurer	- Wendy Johnson
Northern Zone President	- John Hickey
Northern Zone PRO	- Tony Burgess
Central Zone President	- Max Wheatley
Central Zone PRO	- Brent Samson
Southern Zone President	- Russell Quin
Southern Zone PRO	- John McDonald

NZFWDA Competitions Committee

National Competitions Officer	- Simon Bishop
Secretary	- Jenny Samson
Northern Zone Steward	- Bruce McGregor
Steward	- Brent Samson
Treasurer	- Stacey Gwynne
Scrutineer	- Shane Hazelden.

The NZFWDA Constitution is available for download here
<http://www.nzfwda.org.nz/forum/viewtopic.php?f=9&t=9>



Read Northern Zone PRO
- Tony Burgess' column
on page 17 for the latest
track updates in the
North.

42 Traverse - Tongariro Forest, Central plateau, North Island - Closed. 4WD vehicle access on the 42 Traverse is open between 1 December and 30 April only.

Puketiro Road. As of 31 Jan 2014, the Puketiro side of the Zigzag is closed due to logging operations. For more details see <http://arac.org.nz/>

Waitawheta Track/Taieri Road is closed to four wheel driving every year from 1st May until the Friday immediately before Labour Weekend so as to avoid damage which would otherwise occur over the wet winter months.

August 2014, large slip only passable by quad on Whangamomona Rd.

This is not a full directory of four wheel drive track closures and members are urged to seek information from locals regarding the status of track access.

Trail Torque Editing: Bobbie Kincaid : editor@nzfwda.org.nz
Postal Address: New Zealand Four Wheel Drive Association Inc.
PO Box 90960, Victoria Street West, Auckland 1142
Website: www.nzfwda.org.nz
Facebook: <https://www.facebook.com/NewZealandFourWheelDriveAssociationInc>

DISCLAIMER: The opinions expressed in this issue are those of the contributors and not necessarily those of the Association, it's Executive Members or the Trail Torque Editor.

Brass Monkey

John McDonald's notes



Sunday 29th June

Approx distance: 70km

Weather: Cool clear Sunny

Trip: Drivers Briefing was held at the Rakaia Gorge Camping Ground with an emphasis on the large river that have claimed many vehicles in the past.

We dropped our gear off at the three Glenthorne Lodges, the Upper & Lower

Lodges and the Retreat.

The river was running a little high for this time of year and the first crossing of the Avoca River was a little deep with a couple of trucks needing assistance.

The other side we split into two groups one heading up the Avoca River and the other heading up the Harper River.

I was on the Harper trip so I don't have many details of the Avoca Trip but they did report a crossing that was swift and rocky requiring a careful assessment before attempting it.

The Harper was above normal levels for that time of year and just a little cloudy, but it wasn't a major challenge till we got



to the bigger rocks further up the river. The big rock, swift flows and cloudy water made it a little more difficult with the rope being required a couple of times.

Just short of the end of the track Geoff was having trouble and required assistance where he shouldn't have had problems. A quick check found he didn't have the front wheels driving. I headed back with Geoff while the rest went on to the end of the track. Geoff made it back most of the way on his own only requiring a tow through the tricky crossings. Day one first truck down.

That night we had a tea at the Glenthorne Retreat Home made soup for starters then roast beef, spuds and veggies with apple shortcake and custard for dessert.

Incidents: Geoff's Surf with a broken CV, he went into Ashburton and had it replaced

Monday 30th June

Approx distance: 40km

Weather: Raining

Trip: Today we split into two groups again this time we swapped rivers.

Avoca River Trip: The river was up a little more than yesterday but still safe enough if you were careful.

It was raining when we left and continued to do so all day, with only one crossing requiring careful assessment of the best point to cross. We got to the Basin Hut about smoko time and had coffee sheltering under the eaves of the hut.

We continued up the Avoca checking out the old Basin Hut on the way past.

As we climbed I monitored the river level as the rain was heavy at times, but it didn't seem to rise. This was a problem as we were heading up the river and it should have been reducing as less and less



contributories were adding to the flow.

We got to the Amphitheatre Creek and assessed the crossing of the shingle scree it was doable but it was getting late so we turned a round and headed back.

Harper River Trip:

On the way back I got part of a call from the Harper team I didn't get it all but it sounded like they had problems.

It turned out that one of the 90 Series Land Rover had broke a tyre rod end. A resourceful bunch as they are, they took the second Landy out to the Retreat and whipped the tyre rod out if it and headed back up the river to get the other Landy out. While this was happening Paul Curin took the broken parts into Christchurch to get replaced.

It was raining quite hard by now and it must have been a lot of fun working under the Landy. And to make it worse the river

was coming up. Tim was having problems getting the tyre rod to fit and had to resort to using a Toyota part to fix it. (oops I wasn't meant to mention that). Anyway every one got out safely if not a little wetter then they expected. The next day Tim fitted the new parts and everyone was back on the road again.

Incidents: Broken tyre rod

Tuesday 1st July

Approx distance: 42km

Weather: Another beautiful clear crisp day

Trip: Today I planned to head up the Wilberforce River to Urquharts Hut just before Browning Pass to the West Coast. But with the unseasonal warm weather we have been having this winter I suspected the river would be too high to cross. After drivers briefing we set off through the Glenthorne Station to the Wilberforce. Because of all the rain the Station tracks were a little slippery some fun was had, the Station track ran out at Boundary Stream where we cross a large shingle

scree, as normal it was rough with large boulders and not much of a track. On the other side Gordy took the lead as the track was easier to follow. I caught up with Gordy at the next scree and he was looking for a crossing. He had missed the side track to the Fanghill Hut where we were having smoko. I guess I couldn't blame him it was hard to see and I only knew where it was because of the GPS.

After smoko and good chatting about how we could save the world as you do on one of these trip we continued up the Wilberforce. I found a good track on the true left of the river and we were making good time. We got to Burnets Stream and headed up to see if we could find the Weka Burnet Bivouac. But there was no track and the going was very rough. I gave up on finding the Bivi and called it lunch. After lunch we split into two groups, those that had had enough of the rough river headed back and those that just wanted more punishment. Well we didn't get far



about 1.5kms up the river we had to cross the main stream and it wasn't an easy crossing, rough with lots of water. Looking up the river it looked like we would have to do it again in less than a km. It was getting close to our turn round time so I decided to call it a day and head back. I could hear the laughter in the other voices when we told them we were heading back.

The way back was pretty uneventful till I got a call that one of the trucks had stopped without any drive. When I caught up there were people crawling over it, under it and round it but no one got it going. So a rope was hooked on to it and we towed it back.

That night with the help of the Station mechanic the lower lodge team worked on it till late and managed to get the Jeeps

auto going again.

Incidents: Dead Automatic in the Jeep Wrangler.

Wednesday 2nd July

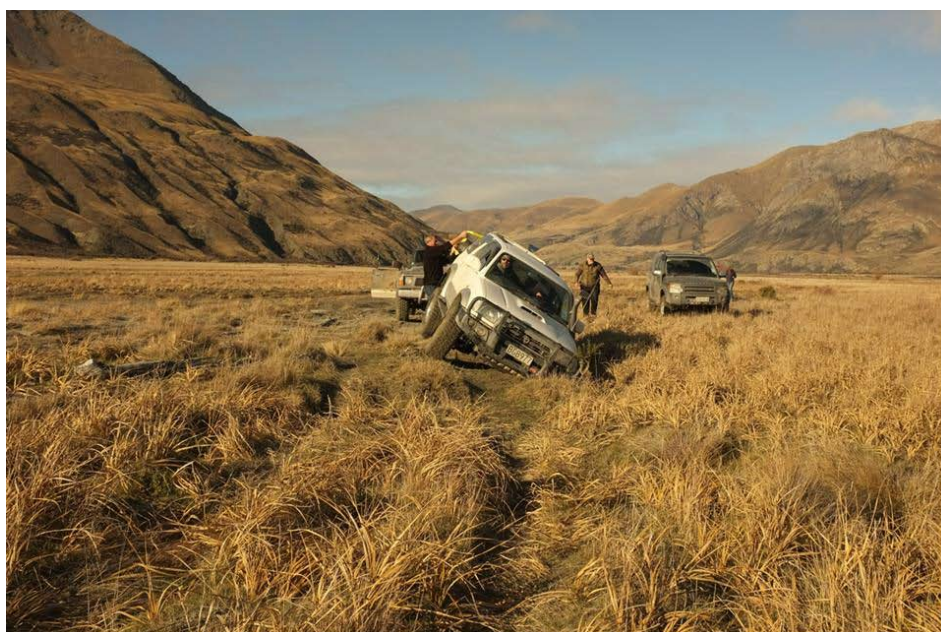
Approx distance: 200km

Weather: Snowing

Trip: The night before we had checked out the Wilberforce, where we had planned to cross, so we could go up the Rakaia but it wasn't to be, the river was far too high to make a safe crossing. Greg said there was a track round the back of Mt Ida that was on Glenlawn Station. So we went up to see John the Station manager. He was very obliging and gave us permission. So in the morning with snow fall we headed back up towards the Retreat meeting up with the rest of the crew. Greg took the lead and we crossed the Harper

with a blanket of snow on the ground. We found the Station track and headed for Lake Catherine known locally as Lake Monk. We stopped at the hut for a cupper and a look round. You would think some of them hadn't seen snow before you had to be careful or you would get one in the back of the head, I wasn't careful enough.

Anyway back in the truck we headed for the road up to Mt Olympus Ski field. The gate being lock we only got to the lookout where we had a team photo. Back down the hill we headed for where the Lake Ida Winter Sports Association had built a beautiful lodge. Unfortunately the lack of ice had meant the lodge couldn't be kept open and it had fallen in to disrepair. We stopped off at the lower lodge for lunch in the warm before heading out to get



fuel and then over to the Potts Lodge on the Rangitata River, where we had been booked into very nice accommodation. The lodge welcomed us with a glass of wine and a chat about the Station.

Incidents: After all the work the boys had done to get the Jeep going again it only lasted a couple of k's before breaking down again. Paul towed Gordy back to Chch to arrange it to be taken back up north.

Thursday 3rd July

Approx distance: 55km

Weather: Cold & clear again

Trip: The plan for today was to drop into the Clyde River just below Erewhon Station and head up the river to the

Lawrence River and the plan pretty much worked.

With the heavy frost over night a few people learned not to put their handbrake on over night as they freeze on, so it took a few minutes to get everyone mobile. Come morning Paul and Gordy were back with a Landcruiser and trailer to take Gordy's truck back home sad ending to a great truck. But that wasn't all, Gordy got to use the Cruiser for the rest of the trip. There isn't much in the way of tracks in the Clyde so I tried to find the easiest route. It wasn't long before we had to cross a main stream, since everyone had now plenty of experience in the big rivers it wasn't a problem. We continued up the river with everyone following me like I was the old mother hen. But when I said that

it wasn't necessary to follow me and they could try and find a better route it was like an explosion with trucks heading in all directions.

We got to the Erewhon Station Hut at about lunch time and had our lunch in the sun just beside the hut. Well that was the plan the sun didn't stay long as it tracked behind Mt McRae, with no sun to keep it warm the temperature dropped like a stone, so we kept going up the Lawrence River. The two rivers are like chalk and cheese. The Clyde with its big boulders and deep streams and the Lawrence with small stream and no boulders. Anyway the going was much quicker and it wasn't long before we got to the Lawrence Hut. But not without incidents, the Landy broke the other tyre rod end. This time we



couldn't nick the one off the other 90 as it needed it to get out. So out come the tools again and the boys managed to make a temporary repair enough to get the Landy back to the Potts.

The rest of us being very sad for Tim, left them to it and continued on. Our goal for the day was to get to the Hermitage Hut. With Craig in the Troopie in the lead off we went. I was well back but it wasn't long before I was just behind Craig, I knew he would have trouble finding the track to the Hut. He missed it as it was well camouflaged. The hut was in a very nice sunny spot but you could tell when the sun went down it got cold, there was a bath on the shady side of the hut and it had over 6" of ice in it.

After lunch we headed back fully expecting to find the Landy limping back, but we never did. The return trip was uneventful. That night the lodge put on another great meal and we ended it up with a few photos we had taken put on the large screen TV
Incidents: Dead Landy again

Friday 4th July

Approx distance: 80km

Weather: Cold & clear with a cold Norwest breeze coming down the valley

Trip: Today was to be a easy day with nothing major planned.

We headed up to Mt Sunday where part of the Lord of the Rings was filmed and climbed to the top only to find the wind was even stronger and colder so we didn't linger.

Some of the boys didn't have enough of the rough river so they decided to head up the Clyde to see what they could find. The report back was all they found was bigger rocks and no tracks, that was the reason I didn't go up there the day before.

After Lunch we headed down to Lake Clearwater for a look round then over to Lake Camp for an easy drive round the back of the lake. We then headed down to Hakatere Heritage Cottage for a look before heading back to the Potts for a farm tour.

Matt took us up the Station's power generator as there is no power up this far and all the Stations have their own generator. The Potts had a hydro generator and a standby diesel that looked like it was out of the ark, after checking





out what was keeping us warm at night we headed round the farm. Sorry I can't remember the fact and figures but it is a very well run farm with emphasis placed on the stock welfare and the lowest impact on the environment possible.
Incidents: None

Saturday 5th July

Approx distance: 51km

Weather: Fine and cold again

Trip: Today the plan was to head up the Havelock River hopefully to get to the St Winifred's Hut.

Today some members of the Mid-



up they looked at me thinking they were going to have to share the hut with me, you should have seen the look on their faces when truck after truck climbed out of the river. I reassured them we were a 4x4 trip and weren't staying.
After Lunch we broke into two groups again, some heading back and some continuing on to see if we could get to St Winifred's Hut.

I chose to continue and headed out into the river bed only to find it a rock garden there were no tracks and no easy way across so we all tried to find our own way through. I would find an easy couple of yards and get in front only to find the rock getting bigger again and someone else getting in front. It was hard slow going, and only four of us got to the last river crossing.

Canterbury 4x4 Club (my Club) added to the numbers. We crossed the Clyde again and headed for the old Station shearing shed on the true right of the river. After a quick stop we headed down stream towards the Havelock crossing the main stream twice more before heading up the Havelock. The bottom half was a lot smoother than I remember from my last trip and we criss crossed the river till the boulders got too big and we headed for the main track. As we headed up the track we found someone if front of us and it wasn't till we got to the Mistake Flat hut that we caught up with them. They were hunters and planned to hunt the Forbes River valley. When I turned



We could see the hut only 500m across the river but it was a couple of k's to get there and we had run out of time.
The trip back was a lot easier as we found an old track. Not completely uneventful though, the track was washed out and when Alan tried to drop off it into the river he found the back was a little higher than he expected and had to get towed off. That night was the last meal of the trip and we had a prize giving. Gordy was the MC and made a great job of it. I had been given a subscription to the NZ4WD magazine and was planning to give it out as a hard luck prize, but when we had so many hard luck stories it was hard to choose from. But as the person that put the hard yards in that was easy. Paul Curin had done three trips to Christchurch to get parts and vehicles so others could



continue on the trip. Matt had a prize of a bottle of whiskey for the person that did the most miles, again that was easy and Paul got that too.

Incidents: One truck stuck on a bank and one with a broken front diff.

Sunday 6th July

Approx distance: 75km

Weather: Today the Norwest came up and we didn't have a frost.

Trip: Today I had planned to head down the Rangitata River to the Harper Skating Rink.

Incidents: The river had been high and there were a lot of soft spots so I had to be careful after all I had done a whole week without getting stuck once.

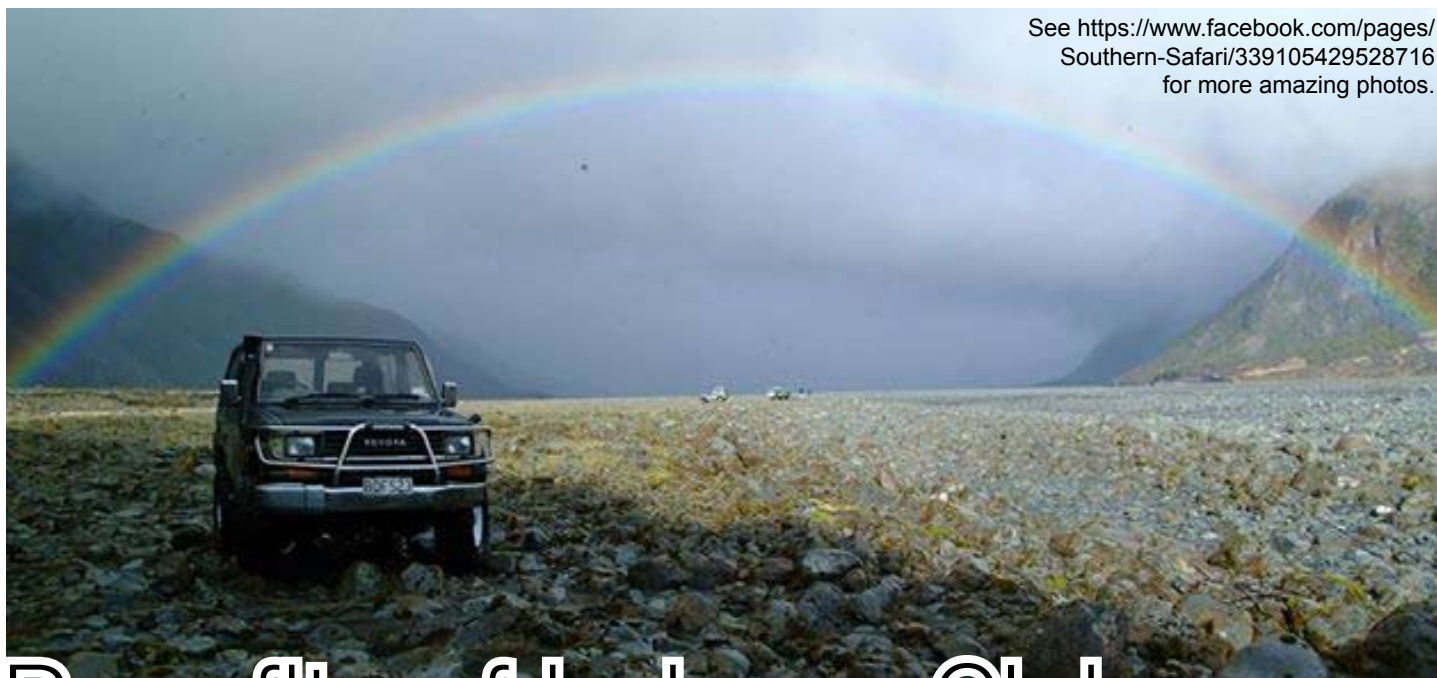
The Rangitata was smooth easy going but the river was high and I had to be

careful where I crossed, so we kept crossing to a minimum and kept to the true left. As we went down the side of the main stream we could see large trout in the river and this got Craig really excited as he was an avid fisherman, but sorry Craig it is out of season you will have to come back later. To avoid the main stream we crossed a flood plant that the river had been over recently. It was rough and very soft as a couple of people found out. It wasn't an easy recovery as the hard ground was some distance away, but I had been prepared for this and

had one of our Clubs long ropes. With them out we looked down stream and found the main stream had come straight into the side of the hill that meant we had to back track to find a crossing. It was getting on and the river was high making any crossing risky, so I decided we would head back the way we came. We had a good trip. Incidents: None just a few getting stuck requiring recovery.



See <https://www.facebook.com/pages/Southern-Safari/339105429528716> for more amazing photos.



Benefits of being a Club...

Introduction

My name is John Hickey:
I am a member of the Landrover Owners Club Auckland. I am Liaison Officer for that Club. Last year I was the Vice President for the Northern Zone of the Four Wheel Drive Association. This year (2014) I was elected President of the Northern Zone. I have been asked by Tony Burgess as President of the Four Wheel Drive Association to speak at the conference about the benefits of being a Club.

Clubs

- By "Club" I mean a group of people with similar interests not seeking to profit from their association with each other, so not a business.
- If a Club is incorporated, it is usually incorporated under the Incorporated Society's Act 1908 ("the Act"), the Charitable Trusts Act 1957 or the Charities Act 2005.
- When I refer to Club I am only talking about incorporated societies or Clubs. (According to VonDadelszen in his "Law of Societies in New Zealand" (2nd Ed.) ("Von Dadelszen"), there are about 20,000 incorporated societies in New Zealand.)

Why have an Incorporated Society?

- If a group of people get together and are not an incorporated society under section 13 the Incorporated Society's Act there is

joint and several liability for debts. Unless otherwise specified in the Act members are not liable for the debts of the society. You might not think that a problem. However, some years ago I acted for a person who was a member of an immigrant sports community that joined together for sporting purposes. They were not incorporated. The person ordered sports clothing. The supplier was not paid. The supplier sued the client for thousands of dollars owed to the supplier.

- Because the Club was not incorporated each person was jointly and severally liable for the debt.

- In other words, one person could be sued for all of the debt and was sued for all of it. If it had been an incorporated society, it would have been the Society rather than the individual person who would have been sued.

The benefits of being an incorporated society include:

- It is a separate entity from its members;
- There is limited liability (see above). The other side of this is that a Club cannot exist for the pecuniary gain of members and members should not financially gain from their membership. So if Clubs make too much money they may lose their not for profit status (see sections 5, 14 & 20).
- It can own property apart from its

members. As you may be aware, some Four Wheel Drive Clubs own land which is used by Club members;

- The Health and Safety in Employment (Adventure Activities Regulation 2011) do not apply if the activity is a Club activity provided for members (see end note);
- A Club must have a Constitution which sets out the rules affecting members (s6).
- If the Club is a member of the NZ4WD Association, its members have the benefit of the Association's insurance policy.

The Rules and Regulations for Clubs

An incorporated Club has certain obligations:

- It must use the word "incorporated" in its name which can be abbreviated to "inc".
- It must have a registered office (s19).
- It has to have a Constitution (s7) and must register any changes of rules (s21).
- It has to file annual returns.
- It must keep a register of members (s22).

Constitutions

- A constitution sets out the guiding principles or Rules of a Club.(s6)
- A Club constitution means that the rights of the members are set out and those rules affect everyone. (see s6)
- There are specific minimum requirements under the Incorporated Societies Act; (see s6)



Benefits of being a Club continued...

- Many Club's rules include items that are specific to that Club.
- A Club must have officers (s6) and a Committee who need to understand their roles and the practice of the Club.
- Meetings are ultimately more important than any meeting of the executive or actions of the officers of the Club. (As Von Dadelszen says, the executive is always subservient and accountable to the members at a general meeting (6.2.3)).
- The Club needs to have at least one general meeting every year, known as the Annual General Meeting ("AGM") and proper notice must be given together with an agenda.
- A Club must file annual financial statements (s23).

Club Officers

- The President of the Club may exercise leadership on behalf of the Club but is subject to the Constitution and any resolutions of the Club.
- The Vice President is in the same position.
- The Secretary has no powers other than as prescribed by the Rules or Resolutions of General Meetings (Von Dadelszen, 7.2.3). However;
 - The Secretary is a position of power because they record the minutes and write letters.
 - The Treasurer is in a similar position to the Secretary but if they do not do their job properly it can be disastrous for the Club.

I have heard stories about various Clubs that have lost all their funds after a failure to observe proper procedures so that a Club officer with sole signing power or absolute control can run off with Club funds.

Meetings

- Meetings without adequate or proper notice may be invalid (8.2.4) and any business at a meeting without a quorum of members is invalid. A quorum is a minimum number of members required to attend a meeting.
 - I have been involved in cases where societies failed to hold proper meetings so officers were invalidly appointed and when someone objected to mismanagement several years had to be unwound.
- The Club can go into committee, where it excludes the public, and can restrict access to its Minutes accordingly that can be important because otherwise outsiders can challenge matters e.g. suing for defamation.
- Minutes should be an adequate record of a meeting and should record the time, place, those present and the decisions reached. An optional brief summary of the discussion on important points may also be noted (Von Dadelszen, 9.2.1).
 - That can be important because otherwise outsiders can challenge matters e.g. suing for defamation.
- The Minutes should record the motions originally moved, any amendments and whether carried or lost.

- The Minutes are not a formal record until approved and certified by the Chairperson (often Clubs do this at the next meeting).
 - Circulating Minutes after a meeting can be a useful reminder of things to be done.
 - From my own experience from being on various committees, the To Do or Action List at the end of the Minutes, while not part of those Minutes, can be a very useful reminder to all concerned.
 - The Minutes should be kept in a permanent form and should be available or distributed to those entitled to attend a meeting.
 - I understand that only those entitled to attend in-committee parts of a meeting should be allowed access to those parts of the Minutes (9.2.9).
 - If a member moves a topic at a meeting, usually known as a motion:
 - The Chairperson has a limited discretion to decline to accept the motion, for example if it goes beyond the scope of the meeting or is ambiguous, vague or poorly phrased.
 - In the absence of specific rules, any motion should be debated with a speaker moving and speaking to the motion unless there is a discussion first. A seconder may then speak and then there should be debate. Usually the mover has a right of reply. At that stage it is often appropriate for the Chairperson to re-state the motion and then call for a vote for and against.
 - A vote can be by acclamation, in other words by an oral vote by those in favour or against. However, a member can call for a poll. The Minutes should record how the vote has been recorded and determined.
 - Usually if the Chairperson has a casting vote, then that vote should be in favour of status quo.
- In summary a Club is for its members, and if an incorporated society, exists to protect its members.

Most Club rules are there for everybody. To avoid people hijacking committees or Clubs I urge you to remember the common interest of Club members and to work for the common good.

Under the Health and Safety in Employment (Adventure Activities Regulation 2011) an adventure activity does not include an activity provided by a sports Club or recreation Club to:

- 1) A member of a Club; or**
- 2) A member of another sports Club or recreation Club under an agreement between the Clubs; or**
- 3) A person who is not a member of the Club if the activity:**
 - a) Is provided only to encourage membership of the Club or interest in the Club's activities or for the purposes of a competition; and**
 - b) Is provided to any one person no more than 12 days in any 12 month period.**



Central Zone Club Truck Challenge

2013 - 2014 Series • Round Four • Orongorongo Station • 8th June • Story Andrew Gee, photos Pat Gee.

The Central Zone Club Truck Challenge has been run in the lower North Island over the last three years. Honchoed by Mark Watchorn of the Manawatu 4wd club and financially underwritten by the Central Zone of the NZFWDA, it provides a series of events that has become very popular with serious wheelers who want to progress their driving skills. It provides something not too damaging to your vehicle (which must be registered and have a WoF) and is identical to "Club Champs" events that 4wd Clubs put on. It is scored in a similar way to National 4wd trials and people who compete in the Club Truck Challenge get a good insight into the nuances of hub placement and the line between pegs.

This year's Series had four Rounds starting in Taranaki in Labour Weekend, Round two in the Wairarapa in January, Round three in Fordell, near Whanganui in May and finishing in Wellington at Orongorongo Station in June. Round

four was run by the Wellington Jeep Club. As well as setting up a course they arranged farm house accommodation and a spit roast meal for the out of towners that stayed the night before. Similar arrangements had been done at other Rounds and makes it a very friendly weekend away.

The Club spend two days before hand plotting out a course which was over a new type of terrain to previous Rounds. This being a lot of loose rock, tight creek beds and a large rock pile. This event was run in a different way to past Rounds with the hazards spread over a large part of the Station which includes the Orongorongo River and the sea coast. Competitors enjoyed a farm drive that took in great high level views back over Wellington harbour from the air strip on Cattle Ridge. After our first set of hazards in loose rock we had our smoko beside the air strip to take in the views before doing another set of hazards on the ridgetop. My modest Club

members lead the visitors to believe that I had set all the hard hazards but my usual very average performance showed that it was no great advantage. Wellington Jeep Club member Lisa Ryan had an outstanding day in her second event, driving a borrowed vehicle to come fifth overall for the day.

These quite technical hazards were followed by a speed section in river bed and a hill climb and creek bed hazard on the river flats before heading away to the last area of hazards in a more traditional grassy paddock. The tight creek bed runs tested articulation and wheelbase but all vehicles are suitable for this competition. There is a formal set of rules that defines three vehicle Classes to give everyone a chance. Helmets are worn and cross entering multiple drivers for one vehicle are allowed.

The rules, calendar and results can be



The Don and Skid



Alan and Shona Stone



Orongorongo Station



found on a website <http://www.sportsground.co.nz/czctc> . Registering yourself on the website will automatically send you the latest information about the Series as it comes out. There are thoughts about opening entry to any NZFWDA affiliated member not just Central Zone Clubs for next year's Series.

If you look at previous results you may think that you need a Jeep to win, it certainly helps! People have also made credible performances in other vehicles, Landcruisers, Prados, Hiluxs, Discoverys and the ubiquitous Pajero all compete equally. There was a great core group of people who travelled to all of the four Rounds this year headed by Shona and Alan Stone from Mt Egmont Club and fellow Nakians Neville Vesty, Keith Hoskings and Graeme Goble. Shona and Alan are stalwarts of the Central Zone, Shona has been the Zone Treasurer for many years now. They put on two Rounds of this year's Series, and did a brilliant job. Steve Stewart from Fielding Club took his Nissan Patrol to every Round as did Ross Gregory in his Jeep and Brendan Watchorn from Manawatu 4wd Club. Dave MacGinnity, Don Morgan and myself are regular competitors from Wellington.

The Orongongo event finished with no major mechanical breakdowns and nice easy recoveries. For the Fordell Round we had the use of the farmer's tractor and it had a bit of a workout. Hailed by all participants as a great success next year's Series awaits a new crop of keen competitors to have a go. Last year's Series winner, Dave MacGinnity won the overall modified Class again this year driving his Jeep CJ5. This year's stats show that 32 different competitors entered at least one of the four Rounds this year, down on last years' 53.



Steve Stewart



Neville Vesty



Steve Stewart

Results for Round 4

Name	Class	Score	Overall position
Don Morgan.....	mod.....	267.....	1st
Dave Macginnity .	mod.....	327.....	2nd
Marcus Gazely ...	mod.....	367.....	3rd
Marty Green	mod.....	410.....	4th
Lisa Ryan	mod.....	457.....	5th
Andrew Gee	mod.....	510.....	6th
Neil Blackie.....	mod.....	570.....	7th
Alan Stone	ltd	633.....	8th
Neville Vesty	mod	660.....	9th=
Ross Gregory	ltd	660.....	9th=
Brendon Watchorn...	ltd	708.....	10th
Steve Stewart	mod.....	730.....	11th
Tony Field	bas	900.....	12th
Graeme Goble	ltd	903.....	13th
Shona Stone.....	ltd	945.....	14th
Keith Hoskings ...	bas	965.....	15th
Ian Burgess	bas	999.....	16th

2014 Series Results

To qualify - 3 rounds had to be completed

Basic Class

(Open Diffs) - No results as no one completed all 3 Rounds.

Limited Modified

(uncontrolled traction aid on one diff)

- 1st Ross Gregory
- 2nd= Alan Stone
- 2nd= Brendan Watchorn

Modified Class

(manually controlled traction aids)

- 1st Dave MacGinnity
- 2nd Don Morgan
- 3rd Steve Stewart

What is a Club Truck?

Central Zone Club Truck Challenge 2014 - 2015 Series •
Story Andrew Gee, photos Pat Gee.

A Club Truck is anything you want to bring to the event. The Central Zone Club Truck Challenge Series is aimed at getting people to have a go and to drive the short individual tests or hazards as they are referred to. It is not done at high speed but rather knowing your vehicle and precision placement of your wheels and vehicle is what is needed. At Labour Weekend this year the Series will start its fourth year of competition. Run whatever vehicle you have, there are Class rules to even things up and the hazards are graded to give all vehicles a good chance. To enter the Club Truck Challenge you need to be affiliated to the NZFWDA, wear a helmet and your vehicle needs a WoF and registration, and that's all. Information about the Series, including the rules are all kept on a website, <http://www.czctc.org.nz/>. If you register on the site then you will receive an email every time the information is updated. The three Classes are:

1. BASIC

- a. Open differentials
- b. No traction aids.
- c. Maximum tyre size 33" or metric equivalent

2. LIMITED MODIFIED

- a. Traction aids which the driver has no control over e.g. limited slip diffs
- b. Maximum tyre size 33" or metric equivalent

3. MODIFIED

- a. Manual lockers
- b. Fiddle brakes to one (front or rear) set of wheels only
- c. Maximum tyre size 35" or metric equivalent



Peter Pope from the Wairarapa Club drives this tidy Toyota Prado in the Modified class.



Dave McGinnity has won a number of the Rounds of the Club Truck over the years driving Old Yella, his Jeep CJ5.



Alan Stone of Mt Egmont club, coming out of one of the drain sections at the Fordell round. This 70 Series Cruiser is run in the Limited Modified Class.



Don and Trish Morgan climb out of a creek bed in his Taupo 1000 racer, the Jeep TJ5.



Rob Badland drives this Toyota Hilux in the limited Modified Class.

2014/2015 Rounds

26 October 2014,
Valley 4wd Club, Wellington

1 November 2014
Egmont Club, Taranaki

February, 2015
Desert Defenders, Ohakune*

April 2015 Wairarapa*

May 2015 Wanganui*

* Dates and locations to be confirmed



The Mitsubishi Pajero of Brendan Watchorn at Fordell as a limited modified entrant.



On a sidling during the Wairarapa round. This Jeep Wrangler is run in the Modified Class.



Guy Conroy from CCVC squeezes out of a tight gully in his Basic Class FJ40.

In the Basic Class we have had people enter in Jeep Cherokees, Land Rover Discoverys, Mitsubishi Pajeros, Toyota Hilux single and double cabs and 80 Series Landcruisers. A dry event in summer could be done on All Terrain tyres but Mud tyres are your safest bet. The Limited Modified and Modified Classes are more likely to be short wheelbase vehicles such as Jeep Wranglers, Toyota Landcruisers of many vintages, Mitsubishi Pajeros, Nissan Patrols, Toyota Hiluxs and Prados and some Winch Challenge vehicles.

The Modified Class vehicles are not modified as much as you might think. Dave McGinnity of Windy City Offroaders has won the Modified Class overall for the last two years in his Jeep CJ 5. His Jeep only uses auto lockers and

Silverstone tyres, his secret weapon is experience, good maintenance and doing all of the Rounds of the competition. Don Morgan uses a Wrangler that he built as an off road racer, again on Silverstone tyres. My own TJ Wrangler is basically stock with open diffs, 50 mm suspension lift and Simex tyres. I only run it in the Modified Class to avoid arguments over eligibility but other people are not so worried about the doing the whole Series will chose their Class on the day.

After you turn up for an event there is a basic safety check on the day and then you are put into a small group to do the hazards. The scoring is usually done by an experienced National Trials competitor who isn't competing on the day. They are great sources of driving advice themselves and the technicalities of the points system that is used.

Ross Gregory from Wairarapa Club drives his Jeep in the Limited Modified class.



Andrew Gee from Valley 4wd Club zeros a dry hillclimb at the Wairarapa.

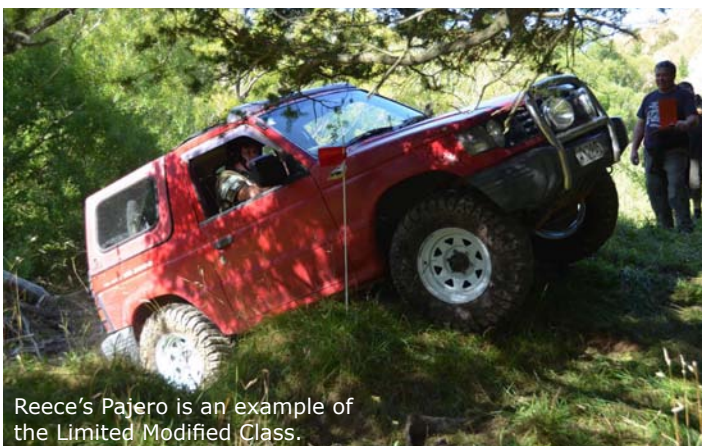
We look forward to seeing some new competitors to try their hand at this Series of "fun trials" over Labour Weekend in Wellington.



This Toyota Hilux uses Rover power to spin the wheels.



Marty Green from Capital Cruisers Club drives his Cruiser in the Modified Class.



Reece's Pajero is an example of the Limited Modified Class.



Geoff Butcher from Off road Wairarapa enters this Nissan Patrol in the Limited Modified Class.



NZFWDA President

Neville Dunton

P: 07 578 2689 ---- M: 027 446 5634 ----E: president@nzfwda.org.nz



Hello.

I find it difficult to start this article, not because I have nothing to say, but rather where do I start?

I guess it is fair to start with an introduction of who I am.

I've been involved in 4 wheeling for just on 30 years and for most of that time I have been a member of Bay of Plenty 4WD Club. My vehicle of choice is my trusty Nissan Patrol which has been extensively modified (yes, it is fully certified). This truck has taken me on many excursions throughout New Zealand. Like most of our members, I really enjoy getting into the great outdoors and there are few areas of NZ that I have not seen from behind the wheel of my Patrol.

I have also driven extensively throughout Australia's outback and, in 2011, Catherine and I got to drive the Rubicon Trail in the US. That was a fantastic trip, just 3 trucks (two highly modified Jeep Wranglers and, you guessed it, an original old FJ40). The trip started from historic Georgetown and five days later we returned having completed a full round trip in and back out of the Rubicon. Sadly, the Rubicon, like many other trails in the USA, and also here in NZ, is under threat of closure to 4WDs.

In the late 1990's I made a transition to National Comps and I've since become a bit of an ageing stalwart amongst the competitors. I intended to take a wee breather from competitions this coming season but Catherine allowed me to buy a new truck so I guess I will be out again, at least for the Northern Zone Series...

I am passionate about 4WD sport and recreation, and I like to think I am a responsible user of my various 4WD trucks in all environments. I believe I have given back to our 4WD "movement" on many fronts having been President of BOP4WD Club for many years, and a couple of stints as National Competitions Officer. Now, the time has come for me to "pay it forward" and I was delighted to be nominated and elected as President at the most recent NZFWDA Conference and AGM.

The NZFWDA Executive are a diverse group of individuals but what I find really pleasant is that everyone on the Executive is there because they want to make a difference. The Association is a complex beast and we represent the equally

complex interests of many thousands of members throughout New Zealand.

Personally, I have a reasonable array of commercial and life skills, and I believe I have strong analytical and strategic thinking abilities. I have a strong sense for "fair play" and I tend to see things from the big picture perspective. Having been an Executive member of NZFWDA for a number of years I have a strong sense of where the Association could be to best deliver on members' needs and I believe I have been a strong contributor as a member of the Executive team.

Good things don't always happen because of one individual, but great things can happen when the guys and gals who put themselves forward for Executive duties are all committed to making a difference. It is also important to acknowledge that all the Executive are "volunteers" which, for many organizations, means they might be reactive rather than proactive. NZFWDA is blessed by having a very committed group of executive members who are proactively involved in some quite challenging initiatives. These include, in no particular order:

1. Reinvigoration of Trail Torque through the appointment of Bobbie Kincaid as Editor. The quality and content of TT has significantly improved. I consider communication to (and from) our members and Clubs to be very important and will continue to commit appropriate resources to ensure Trail Torque continues to develop as a relevant and interesting form of open communication for our members.
2. Our partnership arrangements with DOC (and other similar organizations) have been significantly advanced during the past couple of years. Roger Seymour, National PRO, will no doubt be reporting on some very significant and real achievements in respect to working with DOC and maintaining access to DOC land.
3. NZFWDA website and database have languished for quite some time. A recent review determined that whilst both were perhaps dated, they nevertheless were functional and relevant for the Association. We have undertaken some minor "tweaks" to the database this year and we will continue to look at making things more accessible and easier to use. Open, easy, communication makes life simple rather than hard.
4. Late in June Auckland Transport presented their Unformed Legal Roads Policy Consultation for consideration by NZFWDA. Whilst we understood the

draft policy was intended to cover the use of unformed legal roads within the Auckland Region the Association took the view that Auckland Transport policy may well become a template and/or set a precedent for other local and regional authorities in New Zealand. I asked John Hickey, Peter Vahry, and Tony Burgess to review the policy document with me. Some intense teleconferences ensued and whilst we considered the draft policy was well considered and written, there were a number of areas where we considered changes should be made. From a National association perspective we are concerned to ensure continued public access and use of all unformed legal roads and the retention of the existence and status of these roads. It was agreed we would respond in three parts, the National perspective by myself as President, Northern Zone view by John Hickey as Northern Zone President, and Peter Vahry would make a submission as a life member of NZFWDA and long standing member of Auckland Four Wheel Drive Club. All our submissions were well received and I have since been advised Auckland Transport will be making relevant changes to their draft policy.

5. NZFWDA insurance policy was extensively reviewed during the past year. The level of cover and premium are considered to be the best achievable for our organization and the risks we seek to cover. We are very comfortable with the range and level of cover the Association now has however we also recognize a need to achieve consistency amongst all Clubs (and the Association) in terms of constitutional definition of "members". Changes to the Constitution have been identified as being appropriate and these will be considered, and appropriate remits put to members for resolution at the next AGM. In the meantime, we are satisfied the insurance policies continue to provide relevant and appropriate cover for our sport and recreational 4WD activities.

I guess my intent, this year, is to continue to achieve small, incremental changes to how NZFWDA presents itself to members, and to maintain and build our National and Zone presence. I'm looking forward to a great first year as President and I am excited to get started in this role. Thank you for giving me that opportunity.

Neville Dunton
NZFWDA President

NZFWDA Northern Zone President

John Hickey

Mobile: 0274 531 247 --- Home 09-630 4904 --- Email: nthzpresident@nzfwda.org.nz



Hi all
I hope that those of you who managed to get to the conference and/or AGM enjoyed it. I found it interesting and useful, especially catching up with those I have met at previous conferences and learning from members of the different Clubs. As a newbie to the Committee I am still learning how the executive operates and am finding it interesting.

In Auckland, Auckland Transport - which is a Council Controlled Organisation (known as a CCO) - controls Auckland Council buses, trains and roads. Auckland Transport put out a Draft Unformed Legal Roads Policy (in other words - paper roads) which Neville Dunton received on 25 June 2014. This was hurriedly circulated to Tony Burgess (now Northern Zone PRO) and Peter Vahry (of the Auckland 4WD Club) and me. There was then a teleconference by speaker-phone and mobile (problems with Skype) to discuss the draft policy. We all agreed that the Auckland Transport policy could be used as a template or benchmark for other Councils, so we considered that there were issues for the whole Association and we needed to make submissions. As a result, on behalf of the Northern Zone I made a submission and Neville Dunton made a submission, Peter Vahry on behalf of the Auckland Club also made a submission. On your behalf I made submissions which included submissions on the following matters:

(a) I agreed that some parts of the draft policy were helpful, useful and appropriate but we are also concerned about the definition of legal roads as only being recorded on survey plans. I submitted that it needs to be acknowledged that they are still public roads.

(b) Whether users could modify the surface of the road – I submitted users should be able to repair for the purpose of access.

(c) There was a proposal for the Council to grant licences to occupy. This could prevent access. I submitted that the proposal regarding encroachments need to follow a public notification and consultation process.

(d) Recreation referred to dogs, horses, hunting but not four wheel drives. So I submitted we should be included in recreation.

(e) Use of unformed roads included an obligation not to damage the surface of the road. Given that these are unformed this seems unreasonable. I suggested that this should be “not to deliberately or unreasonably damage the surface”.

(f) Council referred to trees, crops and vegetation on the roads. I submitted that adjoining land owners should not plant trees or other vegetation and must not obstruct access and that on a similar basis, road users should be able to remove vegetation with a purpose of maintenance and access and protection of the environment.

A copy of my letter and Neville's email to Auckland Council is available on the members-only section of the website. Alternatively, they can be obtained by emailing me or the Northern Zone Secretary, Sandra Cohen.

At the April Zone AGM in Huntly, on 12 April 2014 Wendy Johnson was re-elected Zone Secretary Treasurer. At the National AGM Wendy was elected National Secretary and so at the subsequent (last, recent Northern Zone Meeting on 12 July 2014) Wendy stood down as Northern Zone Secretary Treasurer. Sandra Cohen from the Jeep Club (and partner of Russell De Luca – former Northern Zone President) was elected as Northern Zone Secretary Treasurer. I hope you will welcome and support Sandra. If there are some teething problems with all the changes, please excuse us.

In the last few months the only four wheeling I have been able to do is Bethells Beach on a joint Land Rover Owners' Club Auckland and Auckland Four Wheel Drive Club run - about 56 trucks between the two clubs. We had access to sand dunes on a private farm which is always a great place to drive. Newer drivers are always challenged by the steep drop-off into the river and the way the sand saps power is always interesting. There was one steep hill that only trucks with rear diff locks could get up without punishing their vehicles. I knew the Camel could climb up it but decided I would leave it to others ... Ending on a personal note, all three of my trucks are currently registered, warranted and driveable. My 1956 series 107 even passed its warrant first time! I wish it was always so (I trust John Harvey who does my warrants and knows about four wheel drives to address safety issues and to point out upcoming maintenance.) Probably the pass first time was because I haven't been using it enough. The joys of older vehicles...

I hope we all get out to enjoy some four wheeling.

Regards
John Hickey
President Northern Zone



Southern Zone President

Russell Quin

P: 03 477 0004 ---- 027 222 4879 ---- E: szpresident@nzfwda.org.nz



Hi, in the south there has been quite a bit of activity around the Clubs. The Mainland Winch Challenge Series is in full swing with good competitor numbers participating this year.

The Land Rover Owners Club Otago had one of their best Winch Challenges this year with the weather behaving itself and comments from the North that they had never been to the Otago grounds when it had been hard and dry and fine. This made for interesting winching conditions and plenty of breakages on the hard ground.

John McDonald by all accounts ran another fantastic adventure for those lucky enough to go on his winter Safari.

Clubs in the Dunedin area have had a couple of busy days with callouts from rest homes and the Hospitals requiring Staff pickups especially in the hill suburbs when we have had snow days and have also been called on to do Meals on Wheels.

Insurance

Putting my insurance hat on I have some enquires from Clubs re our Insurance cover. There is information on our Web

page:
<http://www.nzfwda.org.nz/membership/insurance/>

Along with a copy of our cover note from Vero.

However if Clubs are unsure of our cover or would like clarification on anything please do not hesitate to get in touch with me. I am happy to go to the Insurers if it is a technical question I cannot answer or help with general questions.

Russell Quin
Southern Zone President.



NZFWDA Secretary

Wendy Johnson

E: secretary@nzfwda.org.nz



A big thank you to all our amazing volunteers who have managed your Club membership details. While we are aware of some extremely frustrating issues some of you have encountered with the Database, we are taking your concerns on board and are working towards improving and fine tuning the workings. I know that there have been 'error' issues and I believe that we are all being so efficient that we have been overloading the system at times.

There has been some positive feedback about one of the upgrades where you are now able to 'batch process' your membership. Congratulations to all of you who have persevered and got it done. Membership updates are still rolling in and I hope to have the first Round of membership cards out to Clubs in the near future.

Just a reminder to you all that I am not available during the day to answer your

queries as I work Front of House in my 40 hour a week paid job. I apologise if my response times have not been what you expect and invite you to consider stepping into a National role and take on one of the three roles of Secretary and the Treasurer / Database role which at this time of year is in effect two roles.

On a positive note, the 4WD fraternity are a great bunch of people as my partner and I rediscovered yesterday while out on a Whangarei Club run. The day started well with warm sunny weather after a few weeks of 'the big Northland wet' and there was a good turn out of 4wheelers who were also feeling a bit stir crazy. The run was a good combination of mud, rocks and good views until.....stuck on a corner.....there was that horrible smell, you know the one that says the clutch is not happy. It was so unhappy that one minute the Pajero was moving and nek minute there was no movement, zero

clutch and a long recovery ahead winching to the next fork in the track. From there it was a down hill ride with Rodney's buggy hooked on in front providing the momentum and Pete's truck hooked on behind providing additional braking. Once back at the marshalling point we loaded ourselves into Malcolm's truck to continue the day's 4WDing and at the end of the day he hooked on and hauled us back to town.

But it doesn't end there because the mud needs to come off before the work can begin so the Pajero has been towed to the vehicle wash and back. With any luck we'll be mobile before the next play day!

A huge thank you to everyone for all your help and camaraderie and making sure we still got to enjoy another awesome day of 4wheeling.

Wendy Johnson
NZFWDA Secretary.



National Public Relations Officer

Roger Seymour

P: 04 586 2518 ---- M: 021 424 351 ---- E: pro@nzfwda.org.nz



Report on Dept. Conservation Recreation Advisory Forum 6 June 2014

The forum was attended by representatives of DOC, Deer Stalkers Assn, NZ Cycle Trail, Federated Mountain Clubs, Mountain Bikers, Geological Society, Motor Caravan Assn, Ministry of Primary Industries, Walking Access Commission, Public Access, Coranz, and Tread Lightly. The Forum is setup to assist DOC to increase recreational activity on DOC land in NZ.

As an aside, the Rep for NZ Motor Caravan Assn spoke about his group. They now have 54000 members in NZ, and is the fastest growing recreation activity in NZ. Many camping areas for this group are on DOC land as you can imagine.

DOC's management of recreation is now instructed by Government to shift from the supplying of assets, to encouraging more people to use these facilities.

Community Conservation Partnership Fund and how it works. There was some discussion from DOC about the \$26 million dollar fund that has been set up to pay for the advancement and maintenance of recreation assets in NZ. The money is to be spent over several years and groups like the 4WD Assn can apply to the administrators of the fund for money for projects. It was previously decided

that 4WD Clubs will be a part of the group applying to Federated Mountain Clubs, as administrators for the funding.

Community Agreements for Partnerships and how they will work.

These are an agreement between Clubs will need to sign when we wish to do track work on DOC land. They will be a simple letter for simple clearing by hand type work, and up to a few pages for digger type work. These will be signed by you at a local level.

Lateral Tracks. This description fits those tracks that begin after the main track maintained by DOC stops, and end somewhere where you would start walking if you were hunting. The term lateral tracks, was created by the rep from Deer Stalkers. We agreed that these are the tracks that would be useful to NZFWD Assn Clubs, and that these tracks are generally overgrown or totally hidden. We have made an arrangement with DS Assn that they should give this track information to NZFWDA so we can apply to DOC for permission to reopen or repair, which will create new opportunities.

To Repair, Replace or Remove old DOC assets. There was much discussion about how DOC should decide on the course of action for old assets including Hutts, Tracks, and Bridges etc. DOC have realised that supplying an asset is not the

end of the cost, and that money needs to be set aside for twenty years or so after to maintain and improve these assets, kind of like spending all your income buying a house then can't pay the maintenance bills. DOC were thinking the decisions should be based on usage, that is, if a track or hut is little used then it may be taken away. However, I suggested to the forum that the answer is easy. Do not remove or close anything, but if the area is not used enough then create more usage. For example tell us where an area or track is little used and we will increase usage by driving and clearing and finding the old track. Hahaha smart aye. Richard Davies, Recreation Manager from DOC spoke fully supporting this idea. He questioned me as to how this could best work.

Memorandum of Understanding between user groups and DOC. Andy Cockcroft took the opportunity to again try to get progress on the MOU. It was agreed that the MOU would be sent to DOC again and used as a starting position. The Meeting was from 9.30am until 3pm, the afternoon session taken up by discussions on how we can all make better gains from the regular NGO's meetings. (non-government organisations).

Roger Seymour
National PRO



Northern Zone Public Relations Officer

Tony Burgess

P: 027 479 2636 ---- E: nthzpro@nzfwda.org.nz

Track Access in Northern Zone.

Over the winter months there is often a closure of 4 wheel drive tracks to ensure that damage to waterlogged tracks is kept to a minimum and this year is no exception. The current situation with well known Northern Zone tracks is as follows:

Thompsons Track

Thompsons track over the Kaimai Range is a legal road and the section on the western side is under the control of Matamata-Piako District Council. Earlier this year the Matamata-Piako District Council controlled section of the track was closed to allow forestry operations to take place, shortly before the track was due to reopen in mid April this year a series of slips (not related to the forestry work), blocked the track on the western side making it impossible to access the track.

Council requested NZFWDA assistance in sending a message out to the 4x4 community that the Track was closed and would remain so for some time also asking that vehicles keep away from the track for now. NZFWDA used its networks to send out the message and I am very pleased to report that there was an excellent response to that request and 4x4 vehicles have not attempted to breach that closure notice which helps NZFWDA when working with councils.

After some discussion between Matamata-Piako District Council and NZFWDA, Council has agreed to remove the slips from the track at its cost and the track will be reopened as soon as that work is completed. Unfortunately because of

the ongoing wet weather it is impossible to undertake the work until the weather improves and the slips dry out. NZFWDA will be keeping a close watch on the situation to ensure that Council keep to their word and the track is open as soon as possible, but this is likely to be well into the summer and is very weather dependent. Contractors also have other weather related commitments so it may not be the first work undertaken in the summer. The eastern side of the track is unaffected.

Taieri Road/ Waitawheta.

This track is partly an unformed legal road but is mostly on Department of Conservation land. NZFWDA have a management agreement with DoC to manage this track and access to the Track is closed during the winter months. As a result of a complaint from Waikato Regional Council that use of the track was causing silt to be discharged into the local stream, DoC and NZFWDA closed the track a little earlier than expected this year. The track has been assessed by Waikato Regional Council who has identified a large number of areas of concern that need to be addressed before the track can be opened again. Opening the track before these areas of concern are addressed is likely to lead to legal action and possibly permanent closure of the track so NZFWDA are supporting the decision to keep the track closed for now.

NZFWDA have engaged the services of a professional Engineer to assist us in addressing the areas of concern and will be working hard to have the track reopened as soon as possible but it's unlikely the track will be open again

by this coming Labour Weekend and it may have to remain closed over the summer until the remedial works are completed to the Regional Council's satisfaction.

There is clear evidence of vehicles accessing the track and causing more damage during its closure. This behaviour is of major concern to NZFWDA and makes it very difficult for us to present four wheel drivers as a responsible group when dealing with Regional Councils and DoC and we again ask for patience until we are able to reopen this track.

Maratoto/ Whangamata track (often known as the Wires track).

This track is on Department Of Conservation land and is co-managed with DoC and as has been the case for many years this track is closed during the winter months and is usually reopened at Labour weekend if the ground is dry enough. At this stage there is no reason to say that this will not happen this year.

NZFWDA is working on a proposal to have this track extended to almost double its length, but there is no time frame for this to happen. We are working on it and are currently waiting on a response from motorcycle groups regarding this proposal.

If you would like further information please feel free to contact me on burgess@xtra.co.nz or 027 479 2636 or 09 2983194.

Tony Burgess
Northern Zone Public Relations officer.



Central Zone President

Max Wheatley

E: czpresident@nzfwda.org.nz

I sit down to write this column and it seems not much has happened, just a few little bits from here and there.

Last Central Zone meeting.

We hold our Zone meeting on a Saturday afternoon with everyone meeting for lunch before hand. At the July meeting (the most recent) we had only 15 people in attendance, a little lower than normal. These 15 represented 21 Clubs and 3 tended apologies.

- The Central Zone Club Truck Challenge driven by Mark Watchorn continues to be well supported with the next Round being on the 1st of November, hosted by the Mt Egmont Club.

- There was a little bit of discussion around some of the false rumours floating around in social media about CostaPlenty, both the business and the Club that calls the park their home were assured that all is well for both parties.

- ARAC reports on their continuing work around the Orange Hut.

- On going discussions of NZFWDA insurance and the work being done by NZFWDA executive to resolve some grey areas.

- A proposal was received from one Club for the Zone to look at subsidising the purchase of EPIRS for the member Clubs,

this was well supported and the figures are being worked through.

In the workshop.

Not much has happened there recently, far too cold to venture out there at nights at this time of the year!!! Just little bits of maintenance for those bits that always get broken when you venture offroad.

Off road

Yes, there have been at least 2 memorable trips in the last few months both into private forestry blocks, apart from tyre problems on both, great trips. Catch you next edition.

Max Wheatley -Central Zone President.

Northern Zone Clubs



4X4 Challenges NZ Inc.

PO Box 37 143, Parnell, Auckland
President Tim Fensom : 027 487 1733
president@4x4challenges.org.nz
Secretary Ashley Lucas : acl@xtra.co.nz

4x4challenges.org.nz



Auckland Four Wheel Drive Club Inc.

PO Box 6712 Wellesley St Auckland
President Jeremy Walker :
president@auckland4wd.org.nz
Secretary Tariq Wasim :
secretary@auckland4wd.org.nz
Meet Third Monday of every month at 8pm,
 Vintage Car Club, Fairfax Ave, Penrose.

auckland4wd.org.nz

Bay of Islands 4x4 Club

PO Box 443, Kerikeri
President Andrew Graham
Secretary Martin Rivers : 021 293 7215 : mart.rivers@gmail.com



Bay of Plenty Four Wheel Drive Club

P.O.Box 2300, Tauranga
President Dave Smith : 021 100 4023
david394c@gmail.com
Secretary Matt Pennfather : 021 0236 8358
matthew.pennfather@live.com
Meet First Thursday of each month 7.30 pm
 Tauranga Sports Fishing Club,
 Cross Rd Sulphur Point Marina, Tga.

www.bop4wd.org.nz



Counties 4 Wheelers

PO Box 72 1394, Papakura
President Russell Biggs : 021 935 527
russell@biggsconstruction.co.nz
Secretary Lorraine Chung : 027 242 5968
Lorraine.Chung@asb.co.nz



Cozzie Four Wheelers

PO Box 4133 Hamilton
President Dom Barnes : 027 823 3018
dom@gymcare.co.nz
Secretary John Lisignoli : 021 204 5990
zl2po@xtra.co.nz
Meet Third Tuesday most months, 7.30pm
 Hamilton Cosmopolitan Club,
 Claudelands.

East Coast Four Wheel Drive Club

PO Box 2180, Gisborne
President Rod Dear : 06 868 4882 : rjandradear@hotmail.com
Secretary Graeme Dearness : 06 867 8130
graeme@graemesaudio.co.nz



Eastern Bay Twin Diff Club Inc.

PO Box 588, Whakatane 3120
President Ron Sturme : 027 226 7915
r.dsturme@xtra.co.nz
Secretary Kylie Montrose : 07 304 8801
kgwest@xtra.co.nz
Meet First Wednesday of the month,
 The Whakatane Club, 84 The Strand.

EBTDCLUB@gmail.com



Geyserland 4WD Club

PO Box 2085, Rotorua
President George Estcourt : 021 338 312
president@geyserland4wd.co.nz
Secretary Marika Fritzsche : 021 053 2555
secretary@geyserland4wd.co.nz
Meet First Wednesday of every month
 (except January) 7.30pm at 'Kurious
 Kiwi', 209 Fenton St.

www.geyserland4wd.co.nz

Kaitaia 4WD Club Inc.

PO Box 125, Kaitaia 0441
President Greg Hodgson : 09 409 4167 : greg.barb@xtra.co.nz
Secretary Dave Currie : 09 406 7518
Meet First Monday of the month, 7pm, Kaitaia RSA.

kaitaia4x4club@hotmail.com



Kauri Coast 4WD Club

PO Box 18, Dargaville
President Chris Kemp : 027 441 6515
Secretary Serena Carran : 09 439 0064
kauricoast4wdclub@yahoo.co.nz
Meet Second Wednesday of the month at
 7.30pm Northern Wairoa Boating Club

www.kauricoast4wdclub.wikispaces.com



Land Rover Enthusiasts Club (Rotorua)

PO Box 2113, Rotorua 3040
President Colin Parr : 027 499 6023
partons@xtra.co.nz
Secretary Peter Kelly
peterkellynz@gmail.com

www.lrerot.wikispaces.com



Land Rover Owners Club (Auckland)

PO Box 303-006, Auckland 0751
President Jeremy Bleakley : 021 289 7009
Jeremy@albanyins.co.nz
Secretary Neil Abbott : 021 281 1509
neil.abbott@manumarine.com
Meet First Monday of the month, 7.30pm
 The Normanby Pub, Normanby Rd, Mt Eden

www.lroca.org.nz



Manukau Four Wheel Drive Club Inc.

PO Box 75-199, Manurewa
President Bernie Konz : 09 236 6856
Secretary Joy Browne : 09 238 7298
Meet First Tuesday of month (except Jan),
 7.30pm at South Auckland Car Club,
 1R Great South Rd, Papakura.

www.manukau4wd.org.nz



Northland Family Four Wheelers

37 Tui Glen Place, Glenbervie RD3 Whangarei 0173
President Colin Thorburn
nglasgow300@gmail.com
Secretary Brett Hogan : 09 437 7438
onehogan@xtra.co.nz
Meet Second Thursday each Month,
 clubrooms in Glenbervie.

www.nffw.net



Norwest OHV Club Inc.

PO Box 171, Kumeu Auckland
President Simon Collett
president@norwestohv.org
Secretary Dan Farley
secretary@norwestohv.org
Meet Second Monday of the month, 7.30pm
 Paddy's Bar, Shamrock Drive, Kumeu.

www.norwestohv.org

NZ Jeep Club

c/- 196 Tuapiro Road, RD3 Katikati, 3170
President Mark Spalding : 09 536 7288
Secretary Sandra Cohen : 07 549 1823 : scohen@xtra.co.nz



Port Valley 4x4 Club

President Dan Barnett : dan@drpc.co.nz

Northern Zone Clubs continued...



Rodney Off Road Club Inc.

32 Scott Rd, Stanmore Bay, Whangaparaoa, 0932

President Jimmy Kiddie : 027 222 6366

jimmycando@xtra.co.nz

Secretary Matt Carnell : 029 200 8153

mathias@atrix.co.nz

Meet Second Wednesday of every month,
8pm at the Wade Hotel, Silverdale

www.rodneyoffroadclub.co.nz

rodneyoffroadclub@gmail.com



Shore 4 Wheelers Inc.

PO Box 100-404, NSMC, Auckland

President Kerry Dornbusch : 021 277 6622

nakerz@xtra.co.nz

Secretary Laurence Fear

laurancefear@hotmail.com

Meet Second Wednesday of the month 7pm
at North Shore Rod & Customs Car
Club, 4/26 Hillside Rd, Glenfield.



South Waikato 4WD Club

C/- K Morriss 246 Parapara Rd Tirau 3410

President Craig Tomalin : 027 490 6785

Secretary Karen Morriss : 07 883 1567

Meet First Wednesday of each month
7.30pm at the Tirau Hall.

Sulphur City 4 Wheelers

c/- PO Box 10085, Rotorua 3046

President Steve Wright : 0274 507 990 : jilstev@xtra.co.nz

Secretary Andrew Sutherland : 027 482 1108

sutherlandlog@xtra.co.nz



Taupo 4WD Club

PO Box 457, Taupo

President Peter Kelly : 021 906 639

president@taupo4wd.net

Secretary Derek Hartley : 07 378 2572

info@taupo4wd.net

www.taupo4wd.net



Thames Valley 4WD Club

C/- K. Barriball, Waitakaruru, R.D.6, Thames

President Paul Bax : 027 485 8797

pmadbax@xtra.co.nz

Secretary Keith Barriball : 07 867 3330

buddog@ihug.co.nz

United 4WD supporters

C/- Almara, RD 4, Albany, Auckland

Secretary Carmen Mills : 09 426 8830 : u4wd@nzfwda.org.nz



Waikato Four Wheel Drive Club

PO Box 9313, Hamilton

President Al Laslett : alkb75@yahoo.com

Secretary Rachel Lobb : mudzuk@vodafone.co.nz

Meet Second Thursday of every month 8pm
at the Scouting Hall on Storey Ave.



Whangamata 4x4 Club

PO Box 299 Whangamata

President Graeme King

Secretary Khris Glucina

Meet Second Tuesday at 7:30pm at the
Whangamata Club.

www.whangamata4x4.org

Whangamata4x4@gmail.com



Whangarei 4WD Club

P.O.Box 1850, Whangarei

President John Ellis : 09 435 6260

johnellis1@xtra.co.nz

Secretary Roy Brickell : 09 438 5020

secretary@whangarei4x4.org.nz

Meet Second Tuesday of month at 7.30pm
Kamo Club.

www.whangarei4x4.org

Wilderness Ridge Riders

PO Box 101-910, NSMC, North Shore City

wildernessrr4wd@gmail.com

WIN a pair of TRED Total extraction and Recovery device

NZFWDA members now have the chance to win a set of these amazing devices, along with carry bags and recovery leach by submitting photos to editor@nzfwda.org.nz

NZFWDA is proud to be able to offer two of our members the opportunity to win TRED total recovery and extraction device including heavy duty carry bag and recovery leach (clipped to the device and your vehicle so you don't lose them in the mud or sand).

"I have recently been able to try out these devices and can report that they are very quick and easy to use, recently extracting my Jimny from a rather large hole without the need to winch out or dig my way out - given that the nearest anchor was further away than the length of winch rope I had on board. And I wasn't too impressed at the prospect of moving a big pile of wet sloppy mud with just one small shovel. The Tred 800 that I had strapped to the roof rack was easy to get down and had me on my way in less than 2 minutes. Very simple to use and very safe. I will now be carrying a set all the time and are confident that they will get a fair bit of use in the future."

Tony Burgess



- Photos can be of anything, but must be submitted by a member of a NZFWDA affiliated club.
- Photos must be taken on a NZFWDA event (i.e., any event arranged by any NZFWDA member club). Photos taken on private trips are not eligible.
- The photos will be judged by Trail Torque editor and NZFWDA National President as the photo that best promotes NZFWDA and its member Clubs as supporting a beneficial and responsible recreation.
- The winner will receive the choice of either Tred 1100 or Tred 800 including carry bag and leach. Second place getter will receive the other set.
- Winning photos and a selection of other photos submitted will be published in forthcoming editions of Trail Torque.
- Photos must be submitted via email with your name, NZFWDA Member number and photo description to editor@nzfwda.org.nz by 5pm 28th November 2014

Central Zone Clubs



Capital Cruisers 4WD Club
PO Box 38725, Wellington Mail Centre



Central Districts
PO Box 130 Feilding
President Trevor Hendra : 06 323 3458
trevor.hendra@gmail.com
Secretary Roger Bird : 06 328 5881
bird@parklee.co.nz

Costa Plenty 4x4 Club

c/o P O Box 130 Feilding 4740
President Laurie Goldfinch : 027 246 6133
Secretary Nicki Andersen : costaplenty@hotmail.co.nz



Cross Country Vehicle Club (Wellington) Inc.
PO Box 38-762, Te Puni, Wellington 5045
President Charles Odlin : codlin@odlin.co.nz
Secretary Terrence Broad :
terenceandberyl@yahoo.co.nz
Meet Second Wednesday of each month at
7.30pm Petone Working Mens Club,
Udy St.

www.cvc.org.nz



Desert Defenders Off Road Club
President : Robert Stout : 06 385 9435
rdpjtout@gmail.com :
Secretary : Kandy Mott : 06 385 8090
kandy@motts.co.nz :
Meet @ Stout's or Motts.

<https://www.facebook.com/DesertDefenders4wd>



Feilding 4x4 Club
C/- 39 Seddon Street Feilding 4702
President Myles Norris
Secretary John de Burgh : jdeburgh@ihug.co.nz

www.feilding4x4.org



Hawkes Bay 4WD Club
PO Box 1423 Hastings
President John Jones : 06 877 5868
jandhjones@xtra.co.nz
Secretary Tracey Moss : 06 877 8400
mossimo764@hotmail.com



King Country 4WD Club
11 Waitete Road, Te Kuiti.
President Dennis Frankhouser
4wdrulz@clear.net.nz
Secretary Lynne Frankhouser
4wdrulz@clear.net.nz

www.kc4wd.co.nz



Kiwi 4x4
President Anthony Sayers : 021 989 093
president@kiwi4x4.org.nz
Secretary Reece Hearst : 027 458 9921
secretary@kiwi4x4.org.nz

www.kiwi4x4.org.nz

Levin 4WD Club

C/- 32 Greenwood Boulevard, Otaki
President Paul Shivan : 04 904 6872 : pshivan@gmail.com
Secretary Ken Douglas : 027 530 2614 : ken.douglas@xtra.co.nz



Manawatu 4WD Club
PO Box 5176, Terrace End, Palmerston North
President Phil Shailer : 021 130 7913
rotordogg@hotmail.com
Secretary Bruce Gilmore : 06 323 1119
gilmore@crosslot.com
Meet Third Wednesday of month at 7.30pm
Awapuni Community Centre,
Newbury St, Palmerston North

www.m4wdc.org.nz



Mt Egmont 4 Wheel Drive Club Inc.

PO Box 8014, New Plymouth
President Rowan Huckstep : 027 480 3097
Secretary Elle Newman : 06 756 8673
elle.moratti@hotmail.com
Meet Second Monday of month, 7.30pm at
the Inglewood Club.

egmont4wd.co.nz



Offroad Wairarapa 4x4 Club
PO Box 405, Masterton 5840
President Tony Oliver : 027 552 2202
esthero23@xtra.co.nz
Secretary Mike Rolls : 06 370 9328
mikeandlizrolls@xtra.co.nz
Meet Second Tuesday of month (except Jan)
at 35 Perry Street, Masterton 7.30pm

www.orw.org.nz



Taranaki Family 4x4 Club
82 Wallath Rd, New Plymouth
President Antony Thorpe
president@naki4wd.org
Secretary Kim Voss
exec@naki4wd.org
Meet Last Thursday of every month at
members home, contact
Secretary for more information.

www.naki4wd.org



Tararua 4WD Club
PO Box 4 Paraparaumu.
President Brent Gibson : bgibson@qtl.co.nz
Meet Second Tuesday of every month
7.30pm at Paraparaumu RSA

www.tararua4wd.org.nz



Twin City Four Wheel Drive Club
PO Box 5137, Greenmeadows, Napier
President Floyd Du Plessis : floyd2004@hotmail.com
Secretary Graham Brooker : 027 327 8683
Meet Second Wednesday of each month at
7.30pm, Taradale RSA

www.twincity4x4.co.nz



Valley 4WD Club
13 Lemonwood Grove, Maungaraki
President Brent Samson : 021 478 633
jen_brent@xtra.co.nz
Secretary Neil Blackie : blackie.neil@gmail.com

Wairarapa Four Wheel Drive Club

PO Box 792, Masterton
President Peter Pope : 06 377 1434 : peteshirl@xtra.co.nz
Secretary Helen Rust : 06 372 6966 : helenrust1@gmail.com
Meet Last Tuesday of every month 7.30pm at the Masterton
Cosmopolitan Club.



Wanganui 4WD Club
PO Box 973, Wanganui
President Grant Harrison : 0272 485 943
grant@hiremasterwanganui.co.nz
Secretary Sandra Sarginson : 06 343 7041
sandra.warren@xtra.co.nz
Meet First Tuesday of month, 7.30pm
Wanganui Race Course Purnell St

Wellington Family 4x4 Club

c/- 38 Bracken Rd, Newlands, Wellington 6037
President Marcus Steeneken : 021 439 183 : president@wf4x4c.org.nz
Secretary Tom Lo : 021 2361630 : secretary@wf4x4c.org.nz

Wellington Jeep Club

PO Box 38203, Wellington Mail Centre
Secretary Warren O'Connor : 04 234 6340 : woconnor@paradise.net.nz



Windy City Off-Roaders Inc.
c/o Howat Engineering 10 Horlor street,
Naenae, Lower Hutt 5011
President Mark Pincock (Skid)
skiddynz@live.com
Secretary Brian Hutchinson : 04 564 2699
brianhutch1@hotmail.com

Southern Zone Clubs



4X4 Events Inc

PO Box 13893 Christchurch 8140
President Ash Sergeant : 027 844 1785
 prodowhill123@gmail.com
Secretary Sangita Malcolm : 021 216 2112
 bowhillroad@hotmail.co.nz
Meet Fourth Thursday of month 7.30pm
 at Papanui RSA, 55 Bellvue Ave

www.4x4events.co.nz

Central Otago 4WD Club

P.O Box 314 Alexandra 9340
President Rodney Mason : 03 445 4750 : co4wdc@gmail.com
Secretary Curtis Crawford : 03 446 9068 : co4wdc@gmail.com

Clutha 4WD Club

P O Box 22 Balclutha 9240
Secretary Michael Sutherland : 027 446 5070
 michael.sutherland@farmside.co.nz



Land Rover Enthusiasts Club (Dunedin)

President Noel Harper : 021 454 481
 landiman@kinect.co.nz
Secretary Suzanne Bell : 027 489 0584
 suzannev.bell@gmail.com
Meet Second Wednesday each month 8pm
 Robbies Bar & Grill South Dunedin

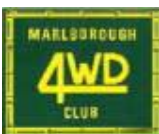
www.lrec.co.nz



Landrover Owners Club (Otago) Inc

PO Box 47 Dunedin
President Michael Adam : 03 454 5467
Secretary Russell Quin : 03 477 0004
 russell.quin@spicers.co.nz
Meet First Wednesday of the month
 7.30pm at Hurricane Rodders Inc
 51 Victoria Rd, Dunedin

www.lroco.com



Marlborough 4WD Club

PO Box 519 Blenheim
President Tony O'Donnell : 021 960 636
Secretary Helen Horton : 03 577 8480

www.marlborough4x4club.weebly.com



Mid-Canterbury Four Wheel Drive Club Inc.

PO Box 327 Ashburton
President Stan Van Heeswyck : 027 555 8855
 president@ash4x4.co.nz
Secretary Abby Calder : 03 307 7120
 secretary@ash4x4.co.nz
Meet Last Thursday of the month, 8pm at
 Club Rooms, Tinwald Domain,
 Maronan Rd, Ashburton.

www.ash4x4.co.nz



Nelson 4 Wheel Drive Club Inc.

PO Box 228 Nelson 7040
President Gordon Jackett: gordon@4wdnz.net
Secretary Alf Russell : alf@4wdnz.net
Meet First Wednesday of the month at
 Suburban Club, Tahunanui 8 pm.
 (except January)

www.4wdnz.net

Otago Recreational 4WD Group

12 Byron Street, Mornington, Dunedin 9011
President Graeme Thompson : 027 483 4285
 Graeme.Thompson@otagodhb.govt.nz
Secretary Greg Carroll : 03 486 1733 : gregc5nz@gmail.com

www.or4g.org.nz



Shotover 4WD Club

PO Box 1503, Queenstown
President Nick Hazlett : 021 176 0766
 president@shotover4wdclub.co.nz
Secretary Leigh Carpe
 secretary@shotover4wdclub.co.nz
Meet First Wednesday of the month
 7.30pm at St John Ambulance
 Rooms, Douglas St, Frankton,
 Queenstown.

www.shotover4wdclub.co.nz

South Island Deaf 4x4 Club

c/- 6 Bellina Place Broomfield, Christchurch
President John Witchall : 021 048 5349
 s.i.deaf4x4club@hotmail.com
Secretary JoAnne Williams
 s.i.deaf4x4club@hotmail.com



South Island Niva Drivers Association (SINDA)

PO Box 34 Christchurch
Secretary Greg Barclay :
 tzoperations@coincascade.co.nz
Meet Third Wednesday of the month at
 Papanui RSA, Harewood Road,
 Christchurch at 7.30pm

Supporting the Community

"Massive thanks to the Manawatu 4WD Club, who raised an incredible \$8500 for the Palmerston North Rescue Helicopter". Manawatu 4WD Club hosted Round Five of the 4x4 National Trials 2013/2014 Series. See www.rescue.org.nz or search Philips Search & Rescue Trust on Facebook for more.



21 JUNE 2014 - MUD CHASER 4 x 4 Mud Drags, Te Teko - Over 1000 spectators, 48 competitors, a strong team of volunteers and supporters and an impressive \$15000 raised!

"Thank you to the members of the Eastern Bay Twin Diff Club for choosing the Dream Chaser Foundation, you guys were awesome to work with. Thank you to all the competitors, some who traveled from as far away as Christchurch to take part".

"We had a fantastic community event over the weekend but most importantly, these events are all about awareness and fundraising so that we can sustain momentum. Sadly as fast as we grow as a charity, so too does the number of family registrations so everyone here at the Dream Chaser Foundation is so happy that Mud Chasers 2014 has enabled us to help more families. We were totally blown away at the amount raised!"

"A heartfelt thank you to everyone involved"

Photos: <https://www.facebook.com/pages/Dream-Chaser-Foundation-a-Chace-Topperwien-Charity/101235743294415>

4x4 Events/Trips/Runs

Email your events to editor@nzfwda.org.nz

All due care has been taken entering these details, NZFWDA cannot take responsibility for any changes or inadvertent inaccuracies. Potential participants should contact the event organiser.



05 - 06 SEPTEMBER 2014

MWC Round Four - Queenstown
- Crown Range. See www.mainlandwinchchallenges.co.nz for info.

13 SEPTEMBER 2014

Winter Woollies 4WD Run, hosted by Desert Defenders Off Road Club and supported by Achilles Radials. A Winter 4WD trip again in the NZDF zones along the Desert Road. Limited to 110 participants. Catering for sightseers and shinys, and those wanting more of a challenge. All vehicles to be equipped with: Seat belts for all passengers; rated tow hooks; approved recovery strap; Spade; Mud Tyres or Tyres with medium to excellent tread for off roading (we suggest a good condition more aggressive tyre with at least 50% tread life left), Fire Extinguisher 1kg AEB – Dry powder, A First Aid Kit. Overnight camping and hot showers available. Costs \$100 per truck, plus options for hearty homemade dinners, lunch and breakfasts. Day membership will be required for non NZFWDA members. Contact DDORC Secretary - Kandy Mott, kandy@motts.co.nz

14 SEPTEMBER 2014

4x4 Charity Food Drive Gymkhana. Hosted by Waikato 4WD Club/Cozzie Four Wheelers/Jeep Club supporting the Salvation Army. Held at Rotorangi (Cambridge). A free breakfast is generously being provided by Morgan & Jayne at Waikato 4x4 from 7:30 till 9:00 in Cambridge. 10am convoy leaves. Cost is \$10 per driver plus a non-perishable food donation for the Salvation Army. The event consists of a number of Hazards including a speed section, hill climb and various other fun challenges. Three classes will be catered for: Stock 4x4 (with A/T's or MUDs); Modified 4x4's; Competition/trailer (non road legal) 4x4's. Helmets and seat belts are required and a roll bar for soft top vehicles. Day membership will be required for non NZFWDA members. Spectators welcome (gold coin donation please) Refreshments will be available. For further information contact: Bryan Williams 021 931 360 or Dom Barnes 027 823 3018.

03 - 05 OCTOBER 2014

MWC Round Five - Timaru - Makikihi. See www.mainlandwinchchallenges.co.nz for details.

05 OCTOBER 2014

Annual Muriwai Beach clean-up by Auckland 4WD Club and Land Rover Owners Auckland in association with Auckland Council. Start at 10.00am with BBQ afterwards. For further details see www.auckland4wd.org.nz - Whats on page.

18-19 OCTOBER 2014

MANUKAU WINCH CHALLENGE - Onewhero. Four classes of competition: Manukau, Club, Challenge and Modified. See www.manukau4wd.org.nz/links.htm for documents.

26 OCTOBER 2014

Central Zone Club Truck Challenge 2014/2015 Series. Hosted by Valley 4wd Club, Wellington. See <http://www.czctc.org.nz> for info.

01 NOVEMBER 2014

Central Zone Club Truck Challenge 2014/2015 Series. Hosted by Egmont Club, Taranaki. See <http://www.czctc.org.nz> for info.

08-09 NOVEMBER 2014

Ahuroa Fundraiser. Hosted by Rodney Offroad Club. Shiny (Option 1): Great scenery and covering a wide range of amazing farm lands, with mud and hills. This trip has some road sections - need Wof and Reg. Tuff Truck (Option 2): Great mud and hill challenges with very small amount of roadwork. Suitable for non-Reg and Wof vehicles. \$170.00 per vehicle and 1 passenger includes dinner and Sunday breakfast. Additional passengers 14yrs and over \$25 per person. Children under 14yrs \$15.00. Lunch options available at additional cost. Conditions of Entry include All drivers must be a current member of a 4WD Club affiliated with NZFWDA; No Dogs or Fire arms; All vehicles to be equipped with the following; Rated tow hooks. Approved recovery strap; Spade; Mud tyres; Fire extinguisher 2kg; First aid kit. Overnight camping available by booking. Registrations by 26th October. Email and contact for registrations Nigel England Ph: 021 244 2347 email: rodneyleftclub@gmail.com. or jimmymcando@xtra.co.nz

14 NOVEMBER 2014

NZ1 Winch Challenge. Based in Christchurch. Public day Saturday - vote for your favourite (proceeds to St Johns), see the vehicles compete on a man-made course in central Christchurch. See www.mainlandwinchchallenges.co.nz for details.

15 NOVEMBER 2014

National Trial Series 2014/2015. Round 1 hosted by Bay of Plenty 4WD Club. www.nz4x4trials.co.nz for info.

13 DECEMBER 2014

National Trial Series 2014/2015. Round 2 hosted by Mt Egmont 4WD Club. www.nz4x4trials.co.nz for info.

10 JANUARY 2015

National Trial Series 2014/2015. Round 3 hosted by Competitions Committee. www.nz4x4trials.co.nz for info.

15 FEBRUARY 2015

National Trial Series 2014/2015. Round 4 hosted by Hawkes Bay 4WD Club. www.nz4x4trials.co.nz for info.

FEBRUARY, 2015

Central Zone Club Truck Challenge 2014/2015 Series. Hosted by Desert Defenders, Ohakune - See <http://www.czctc.org.nz> for info.

08 MARCH 2015

National Trial Series 2014/2015. Round 5 hosted by Cross Country Vehicle Club Wellington. See www.nz4x4trials.co.nz for info.

04 APRIL 2015

National Trial Series 2014/2015. Round 6 hosted by Thames Valley 4WD Club. www.nz4x4trials.co.nz for info.

APRIL 2015

Central Zone Club Truck Challenge 2014/2015 Series. Wairarapa. See <http://www.czctc.org.nz> for info.

MAY 2015

Central Zone Club Truck Challenge 2014/2015 Series. Wanganui. See <http://www.czctc.org.nz> for info.

it WAS NOT that long ago....

PRESIDENT'S REPORT

I would like to welcome all members who have travelled to Te Karaka for the ninth Annual General Meeting of the New Zealand Four Wheel Drive Association and especially those who are not rewarded by tomorrow's competition.

1981 has been a year of consolidation in the Zones with some very good work being done by the Zone Committees. Some that come to mind are: Bill Olsen and his committee who form a very strong access sub-committee in the Northern Zone, Allan Atkinson - the Northern Zone President - who has guided Zone members into several successful projects which I hope he will mention later, Peter Hunt the Central Zone Chief Steward who has attended every Zone trial for two years, Lis Lawson Central Zone P.R.O. who though not in the best of health has vigorously pursued many businesses for sponsorship, George Bean who has attempted to bring to the Central Zone delegates awareness of future land access problems, and the Northern Zone Committee who ran a successful raffle during the year. I believe that this fund-raising will become more necessary in the future as travelling expenses for access and competition co-ordination become more expensive. They are to be congratulated on their forethought in building up a fund to meet an increasing need to fight for continued access to four wheel drive areas that we presently enjoy.

SOUTHERN ZONE

On a wider field, I am pleased to report that the following South Island Clubs have applied to join the Association: Quadrive, Melson F.W.D. Club, Mid Canterbury F.W.D. Club, South Canterbury F.W.D. Club, and Otago Landrover Owners' Club. The main reason for forming a Zone and joining is to achieve a stronger representation to national land controlling bodies: viz. Parks Boards, Forestry, Lands and Survey, on land access.

ACCESS

Another area of co-operation is in the communication between Zones of techniques of presenting 'access cases' to local bodies. I hope that in the next year Zone P.R.O.s will communicate all land access details between each other quickly and often.

COMPETITION

For the next year I hope we can consolidate our competition regulations without too many changes. It is noticeable that the number of resits on this subject has decreased each year. I am sure that too many changes are a great annoyance and hindrance to anyone planning the purchase or construction of a vehicle. Unfortunately between 1979 and 1981 the Regulations were not collated and published in a form suitable for every competitor to have a copy. However Sue Lill has been working hard on this during 1980, and in 1981 when copies of all past A.G.M.s and D.E.C. meetings became available to her she was able to find all the changes that have been passed and is now in a position to publish an accurate set of Competition Rules.

A.G.M. REPRESENTATION

At the present time all members that attend vote at A.G.M. Unfortunately because of distance and expense and as our Association grows larger it is impossible to have representation at A.G.M. from all members and interests. I would like to suggest that Zones consider alternative systems whereby all members are still represented. eg. a proxy system through their clubs that is capable of giving proportional vote according to club membership.

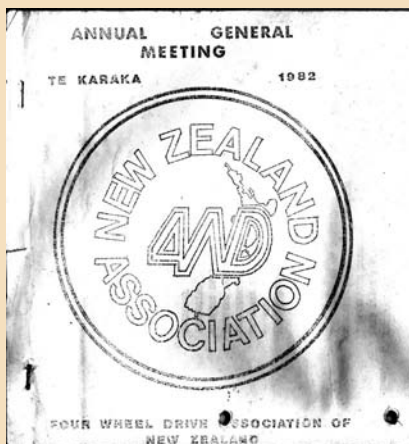
In conclusion I would like to stress the importance of every member being familiar with the Constitution and the division of responsibility between Zone Committees, D.E.C., and A.G.M. For everyone, including organisers, involved in competition a rule book is available and is intended to be read and understood. Understanding should lead to less hassles and more enjoyable events, including different types of competition.

As the largest proportion of our members enjoy the pleasures of driving and exploring the unpopulated areas of New Zealand I cannot stress too strongly that more and more effort has to be put into keeping and even increasing the access to the areas by all Zone Committees.

VERN LILL,
President.

Page 1 of 2

Page 2 of 2



ABOVE: The Presidents Report from 1982. Vern Lill was a life member of the Wellington Cross Country Vehicle Club, one of the original owners of Rallywoods in Wellington, Editor of Trail Torque and instrumental in forming the NZFWDA. He passed away July 2014.

LEFT: Vern & Sue Lill cutting the last piece of cake on the last night of the NZFWD Central Zone Trail Torque Tour 1987 - '88 at the Spring Creek Motor Camp.

Rest in Peace Vern, thanks from all the NZ4WD members of the day and for all the memories.

For Sale

To advertise your four wheel drive bits, pieces or whole vehicles, please email editor@nzfwda.org.nz

4 X 4 Suzuki Speights Buggy, Competitive D Class truck and stands out in the crowd. Used to be a LJ 80 but now very modified for NZ National 4x4 trials but also a great Club truck. The main mods are Nissan 3L V6 petrol motor with Toyota SC14 super charger, Nissan auto, Hilux 3.9 ratio diffs front and rear with Redline oil, coil suspension all round, 2 x air diff locks, 4 x skid steer brakes, Disk brakes front and rear, Hydraulic ram steering with hydraulic orbital steering box. Bucket seats with 4 point harness - 3 inch wide seat belts, 6 point roll cage to comp spec, Optima battery, comes with Kumho 833 tyres 35" x 12.5" x 15". Loads of other goodies done to this buggy. Heaps of spare parts. Redline oil in the diffs. Only been used 2 times in the last 3 years so time to sell and make room for new projects. This truck was built to fit 35 inch wheels cost approx \$40,000 to build. Personalised plates NOT included in sale. Contact Dwayne 021 467 885 evenings. **\$14000**

2002 Defender 110 Td5. 98000 Km's. Phone 022-089-2515. Or email Jim.sublettjim@icloud.com **\$31500**

PA system for sale. Phone Paul 021 295 2814

V12 twin turbo BMW Motor, solid lifters, mega squirt ecu, intercooled. Toyota Windom gearbox modified with extra clutches, in all gears, and modified valve body, with 3:1 ratio centre diff, all wheel drive, four wheel drive switch. High stall convertor Nissan diffs, Cromoly axles and cv, Mark five Hydraulic locker front and rear, operated by wheel brakes, with no self energising from side gears. Air bag suspension with tuned shocks Al engine plate solid mounting motor in frame. Hydraulic steering with self centre orbital valve. Al rap around seats. Internal beadlocked Al rims 35x12.5 x15 tyres Kumho 833. 480 hp at 7lb boost. 630hp at 12lb boost, only running on 7lb. Contact Howie 04 5671471 **\$45000**

4x4 EVENT RESULTS

MAINLAND SUPERWINCH CHALLENGE 2014 SERIES RESULTS AFTER ROUND 2

Clubman:				
Andy Reeves	Canterbury	190pts	1st	
Greg Craik	Otago	100pts	2nd	
Neil Albury	Nelson	95pts	3rd	

Outlaw:				
Sav Satherly	Nelson	200pts	1st	
Mike Holmes	Marl	190pts	2nd	
Andrew Dempsey	Timaru	90 pts	3rd	

Open:				
James Keys	Nelson	200pts	1st	
Gordon Jackett	Nelson	185pts	2nd	
Rowan Coutts	Nelson	182pts	3rd	
Malcolm Wells	Timaru	177pts	4th	
Karl Townsend	Marl	84pts	5th	

Photos: <https://www.facebook.com/pages/Mainland-4WD-Winning>

MAINLAND SUPERWINCH CHALLENGE 2014 SERIES RESULTS AFTER ROUND 3

Clubman:				
Greg Craik	Otago	1165pts	1st	
Neil Albury	Nelson	995pts	2nd	
Andy Reeves	Canterbury	960pts	3rd	

Outlaw:				
Sav Satherly	Nelson	1297pts	1st	
Mike McCarthy		1155pts	2nd	
Mike Holmes	Marl	1113pts	3rd	
Andrew Dempsey	Timaru	1052 pts	4th	
Ben Millar		958pts	5th	
Don Hayes		635 pts	6th	

Open:				
Gordon Jackett	Nelson	1247pts	1st	
James Keys	Nelson	1194pts	2nd	
Malcolm Wells		890 pts	3rd	
Richard Robb		779 pts	4th	
Rowan Coutts	Nelson	279pts	5th	
Alan Parker		97 pts	6th	

CUST CRUSADE ROUND 2 RESULTS

IRONMAN:		
1ST	DAN SWIFT	906PTS
2ND	STEWART MCLENNAN	845PTS
3RD	ANDREW WITTY	822PTS
4TH	ASH SERGEANT	722PTS
5TH	MIKE WATTS	685PTS
6TH	JASON MCLEOD	681PTS
7TH	BEN HOWARD	631PTS
8TH	CROYDON EVERSE	523PTS
9TH	WAYNE LANG	583PTS
10TH	ALEX WALKER	486PTS
11TH	BRAD GILLION	262PTS

CLUBMAN:		
1ST	GREG CRAIK	965PTS
2ND	NEIL ALBURY	860PTS
3RD	ANDY REEVES	665PTS
4TH	BROCK WELSH	354PTS

OUTLAW:		
1ST	PETER HAIGH	940PTS
2ND	SAV SATHERLY	905PTS
3RD	MIKE HOLMES	657PTS
4TH	ANDREW DEMPSEY	160PTS

OPEN:		
1ST	JAMES KEYS	960PTS
2ND	GORDON JACKETT	926 PTS
3RD	MALCOLM WELLS	844 PTS
4TH	ROWAN COUTTS	689PTS



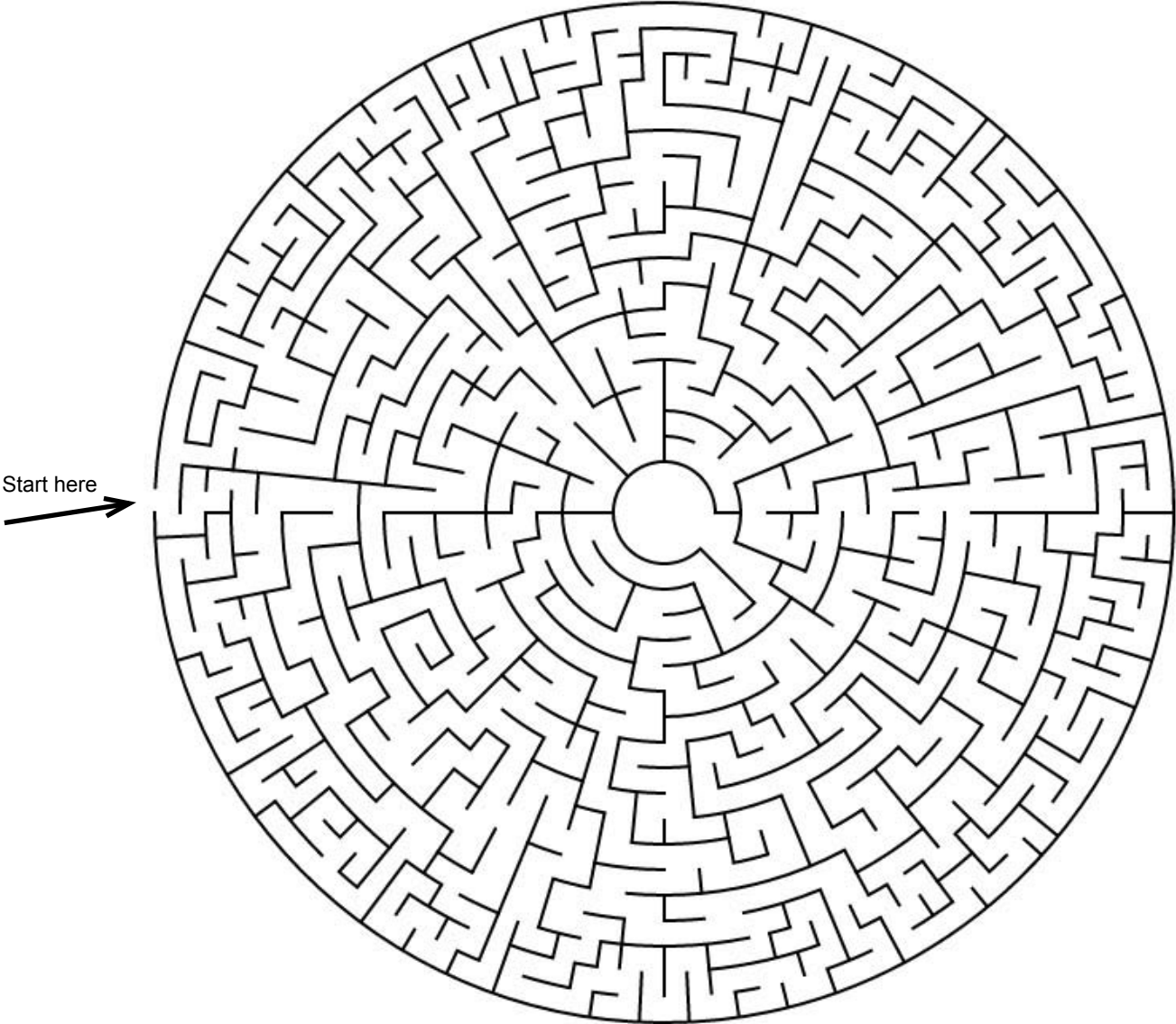
OFFICIAL RESULTS OF THE FORCE 4 KING OF THE PALACE WINCH CHALLENGE.

	TEAM	DRIVER	CO-DRIVER	SCORE
1st	78	Tim Fensom	Richard Verner	854
2nd	79	Martin Rivers	Henry White	760
3rd	60	Raymond Leemeyer	Daniel Leemeyer	693
4th	223	Lance Goodman	Danny Richmond	680
5th	38	Stan Goodman	Chris Golding	676
6th	777	Tony Babe	Tim Chapman	505
7th	65	Tony Smith	Calvin Tyler	321
8th	89	Dave Obery	Jono Climo	223
9th	19	Roger Urwin	Sean Urwin	164
10th	25	Steve Reed	Steve Green	130
11th	64	Thor Feickert	Kevon Feickert	120



NZFWDA Kids Page

Can you spot the five differences between these photos?



WHY DO CHICKEN COOPS HAVE 2 DOORS?
BECAUSE IF IT HAD 4 IT WOULD BE A CHICKEN SEDAN.

WHAT HAPPENS TO A FROGS CAR WHEN IT BREAKS DOWN?
IT GETS TOAD AWAY.

Spot the difference answers: 1 - Wet patch on drivers seat disappears. 2 - Two letters on seat belt have gone. 3 - The driver gets a pair of sunglasses. 4 - The Navi has new helmet stripes. 5 - The Navigator's hand grip is gone!