



This issue: JUNE / JULY / AUGUST 2014
Next issue September / October / November 2014

Established in 1974, the objective of the Association is to further and improve Four Wheel Drive activities in New Zealand.



As a member of the NZFWDA, you become an integral part of this effort to ensure that present and future generations can continue to enjoy our country in four wheel drive vehicles.



IN THIS EDITION

Kath & friends explore South West Australia.

| | |
|---|---------|
| <i>Road Closures</i> | 2 |
| <i>General News</i> | 3 |
| <i>Kiwis in South West Australia - Kath Jaggard</i> | 4-6 |
| <i>NZFWDA Conference</i> | 7-9 |
| <i>NZFWDA Executive Reports</i> | 10-13 |
| <i>It wasn't that long ago</i> | 15 |
| <i>Northern Zone Clubs</i> | 14 - 15 |
| <i>Central Zone Clubs</i> | 16 |
| <i>Southern Zone Clubs</i> | 17 |
| <i>For Sale</i> | 18 |
| <i>National 4x4 Trials Overall Class Results</i> | 19 |
| <i>Mainland Winch Challenge Results</i> | 19 |
| <i>4x4 Club Events</i> | 19 |
| <i>Kids Page</i> | 20 |



42 Traverse - Tongariro Forest, Central plateau, North Island - Closed. 4WD vehicle access on the 42 Traverse is open between 1 December and 30 April only.

Puketiro Road. As of 31 Jan 2014, the Puketiro side of the Zigzag is closed due to logging operations. For more details see <http://arac.org.nz/>

Waitawheta Track/Taieri Road is closed to four wheel driving every year from 1st May until the Friday immediately before Labour Weekend so as to avoid damage which would otherwise occur over the wet winter months.

This is not a full directory of four wheel drive track closures and members are urged to seek information from locals regarding the status of track access.

Thompson Track - Bay of Plenty/Waikato

"There is currently 20 slips blocking the track (plus other small ones), ranging in size from 1 truck load of material to 50m sections of track totally buried.

Council estimate around 80 hours of excavator time, plus labour, chainsaws etc to clear the track. This is about \$15,000-\$20,000K. Council annual budget for keeping this track open is \$6,500 so as you can see this is going to be well short of the 15 to 20k required.

This is not the only issue, council will need to talk to two land owners along the lower section of the track as the only place where they can dispose of some of the slip material is onto their land, and unfortunately track users have upset these land owners in the past which makes it even harder. The other issues are Waikato Regional Council as a lot of damage has occurred at stream crossings. The discussion etc with these groups will take some time. Also the slip material is saturated, any attempt to move it now will create an even bigger mess.

Therefore, the engineer's recommendation to Council is to close the track to all vehicles until next summer. This will give them time to sort out the issues mentioned, get the funding required in place and sort out a plan of attack.

NZFWDA has offered its assistance and we will be discussing what we can do to assist in getting the track open. This council will also be in discussion with Western BOP District Council who control the track at the Katikati side.

This closure will be a short term pain for a longer term gain.

We ask that all vehicles keep away from this track for now. On top of the closure of other tracks in the area this is a major setback, but we will be doing all we can to get as many tracks as possible open again as soon as possible".

Quote from council

"Any attempt by any club or individuals to clear Thompsons Track without council consent will be dealt with accordingly and could potentially face prosecution".

UPDATED: "I have had a message from council today and they wanted me to pass on their thanks to the 4x4 community for the restraint we have shown in keeping away from Thompsons. I understand that there has not been a single 4x4 vehicle on the track since we were asked to keep away and the council are very very appreciative of this and council are impressed as it shows that 4x4 communities can behave in a reasonable way. That helps immensely when we try to negotiate with council over access issues. A shame motorcycle don't show the same restraint.

We are working on a solution and I am confident that Thompson's will be reopened to 4x4 traffic but the biggest issue is weather and neither us nor council have a lot of control over that. Again thanks for the cooperation. I will be keeping everyone informed".

***Tony Burgess
NZFWDA President (past).***

Trail Torque Editing: Bobbie Kincaid : editor@nzfwda.org.nz
Postal Address: New Zealand Four Wheel Drive Association Inc.
 PO Box 90960, Victoria Street West, Auckland 1142
Website: www.nzfwda.org.nz
Facebook: <https://www.facebook.com/NewZealandFourWheelDriveAssociationInc>

DISCLAIMER: The opinions expressed in this issue are those of the contributors and not necessarily those of the Association, it's Executive Members or the Trail Torque Editor.

GENERAL NEWS

General Business discussed at the Executive Meeting 6 April 2014 - SKYPE

- General Business included:-
- Conference and AGM
 - confirming details on speakers.
- Young Driver of the Year nominations
- NZ Walking Access Commission Forum
- DOC (new partnership)
- Combined Club
- Trail Torque
- New Club applications
- Business plan
- Remit Sub-committee

New NZFWDA Executive

| | |
|-------------------------------|------------------|
| President | – Neville Dunton |
| National PRO | – Roger Seymour |
| Secretary | – Wendy Johnson |
| Treasurer | – Wendy Johnson |
| National Competitions Officer | – Simon Bishop |
| Northern Zone President | – John Hickey |
| Northern Zone PRO | – Tony Burgess |
| Central Zone President | – Max Wheatley |
| Central Zone PRO | – Brent Samson |
| Southern Zone President | – Russell Quin |
| Southern Zone PRO | – John McDonald |

The McMinn Trophy was presented by Steve McMinn at the NZFWDA AGM to Jenny Jordan, for her contribution to the Four Wheel Drive Movement.

NZFWDA Young Driver of the Year Award

Young Driver of the Year Cup was awarded to Renee Harrison via a Skype meeting.

Renee has taken an interest in the sport and been involved with her dad, Grant Harrison since 2008 when she was 10. She would sit in the ute for 11 hour trips to Bay of Islands to attend Trials. At 13 she hopped in the co-driver's seat to do Club days for a couple of seasons. At 15 she claimed the co-driver's seat at National Series and competed in 2012/13 season in her dad's E Class truck. At 14 she began attending all the

Wanganui 4x4 Club meetings and took on the role of Newsletter Editor for a couple of years until NCEA took priority. She is currently co-driving for her dad in a C Class truck and is very focussed on getting things 100%. When Wanganui Club hosted Round 3 of 2014 Trial Series Renee put together a 10 minute promotional video which was posted on face book, in her dad's business and also at the local mall. She has been a Youth Councillor on Wanganui District Council for the past 4 years and is currently Deputy Chair Person.

Renee is also a competitive rower training 3 mornings, 2 evenings and Saturday mornings. She is in Year 12 at school and last year passed NCEA level 1 with excellence in most subjects.



Trail Torque is produced four times a year and delivered via the NZFWDA Membership email database.

SEPTEMBER/OCTOBER/NOVEMBER 2014

Check your inbox: - 5th September 2014

DECEMBER/JANUARY/FEBRUARY 2014

Check your inbox: - 5th December 2014

MARCH/APRIL/MAY 2015

Check your inbox: - 6th March 2015

The information we collect and use to contact members and Clubs comes from a central database. The information is entered into the database by a representative from each Club, and kept up to date by that same person. This is usually the Club Secretary.

If you are not receiving Trail Torque or have other problems with the information we have on you, you first need to contact your Club Secretary to ensure that the information is correct on the database.

The Club contact information on the NZFWDA website also comes from the central database, but it is not an automatic function.

The database has a section where Club Secretaries can enter details of who holds positions in the Clubs and contact details for these people. If the information on the NZFWDA website is out of date, firstly check that the Clubs own information is up to date on the database and then contact the National Secretary if there is a problem.

The NZFWDA Constitution is available for download here <http://www.nzfwda.org.nz/forum/viewtopic.php?f=9&t=9>

South West Australia

Story and Photos by Kath Jaggard

It's a hard decision to make – 3 weeks holiday in Aussie or Christmas with grandies and family. Aussie won this time round!

The big plan is to 4 wheel drive around Australia in 3 to 4 week blocks as annual leave dictates. We started in 2008 from Cairns to Darwin, then 2010 Darwin to Broome and back, the last trip was Perth to Broome return. This time we tackled the South West from Perth to Margaret River, down the coast to Esperance then up to Kalgoorlie and back to Perth.

So far we have hired Toyota Landcruiser pop-top campers for the first two trips and the last two have been Toyota Hilux pop-tops with airconditioners! The Landcruisers as can be expected were the more capable 4x4s but the Hilux's were more comfortable and capable enough for the terrain we were expecting.

From Perth to Bussellton for Christmas, on to Margaret River, Albany and Esperance we travelled around the coast through



very populated areas; vineyards, huge caves, treetop walks, sunshine, amazing beaches and lots of people on holiday!

After Esperance things became more interesting. Before we got there, Tropical Cyclone Christine had flicked past the Kalgoorlie and Norseman area. We were planning to travel the Fraser Range Track up to the Telegraph Track coming out at Norseman. Esperance DEC (their DOC office) couldn't tell us if the track was still open, so in typical Kiwi style we decided to have a look.

One thing we do while we're travelling around is take it turn about to drive and navigate on a 4 day cycle. As it happened, it was my and Wendy's turns to drive with Russell navigating and Warwick having the day off.

The track started off in good condition but around the 50km mark it was down to one vehicle width, scrub in the middle and along the sides, (just wide enough for us to get through), water holes, wash outs and trees across the track. At the 99km mark, we came across a tree down with no sign of the track being used for some time on the other side. The track was at least another 150km long so with no serious recovery gear we chose the safe option and turned around. 25km back we found a track that took us another 30km to a main road and on up to Kalgoorlie.

I have to say, the locals at Kalgoorlie rolled their eyes every time we mentioned "Kalgoorlie Cops"! An amazing historical town where the streets really were paved in gold, where they still have a huge working gold mine.



At the 99km mark, we came across a tree down with no sign of the track being used for some time on the other side. The track was at least another 150km long so with no serious recovery gear we chose the safe option and turned around.



On from Kalgoorlie was 253km of the Holland Track, Russell and Warwick's turn to drive and my turn to navigate. The Holland Track is maintained by the Toyota Landcruiser Club of Western Australia. John Holland and his team of men cut the track in 1893 to make a shorter route for miners to get from the South West to Kalgoorlie.

Today it would have to be the best track we had been on all trip. Challenging enough for the Hilux with huge washouts, narrow tracks and wildlife galore. We thought we could do it in one day... famous last words. Warwick had a wee mishap so we decided to slow the pace down and ended up spending the night out on the track. We won't talk about the flies!!

The following day was a further good 2 hour drive out. It really amazes me how you can go from a rough narrow 4 wheel drive track that turns straight on to a fully formed two way sealed highway! This brought us out to Hyden whose claim to fame is a huge rock formation called Wave Rock with temperatures of 40+ degrees.

From there it was a short day and half back to Freemantle, a boutique hotel, a Prison tour, civilisation and home.

Looking forward to the next trip that will take us from Perth to Adelaide across the Nullabor.

Kath





NZFWDA Conference

Snippets from the 40th Annual New Zealand Four Wheel Drive Association Conference, Waipua Hotel & Conference Centre, Auckland.

VEHICLES ON DISPLAY



1943 Dodge WC 57 Command Car. 30,000 produced between 1942 and 1944, as radio command and reconnaissance vehicles. Weight 2.8t with a winch. Powered by 3.8litre side valve 6 cyl petrol engine, developing 93bhp coupled to a 4 speed crash box (no synchromesh) and a single speed transfer case. This one was imported into NZ mid 2010. Current value circa \$60k. Available for hire phone 027 4905 946



ABOVE: Tinaka Mearns Technical Advisor - Recreation, Department of Conservation (DOC).

DOC is changing it's ways, they realise that conservation goes hand in hand with recreation, "it is about the experience (focus)" not just building an asset.

In the past there has been no maintenance plan and areas will now be given an Operating Cost, Depreciation and Replacement value.

There is more improvement to be put in to Strategy, Priorities, Putting Customers First, Marketing, Working with Others, Communications, Training and Tools.

The whopping big file that was previously handed out when you approached DOC regarding leasing/access/maintenance of an area, has been down sized to 5 different policies (documentation varies from one page to 16) depending on what you plan to do with the land and how long you want it.



1956 LandRover Truck



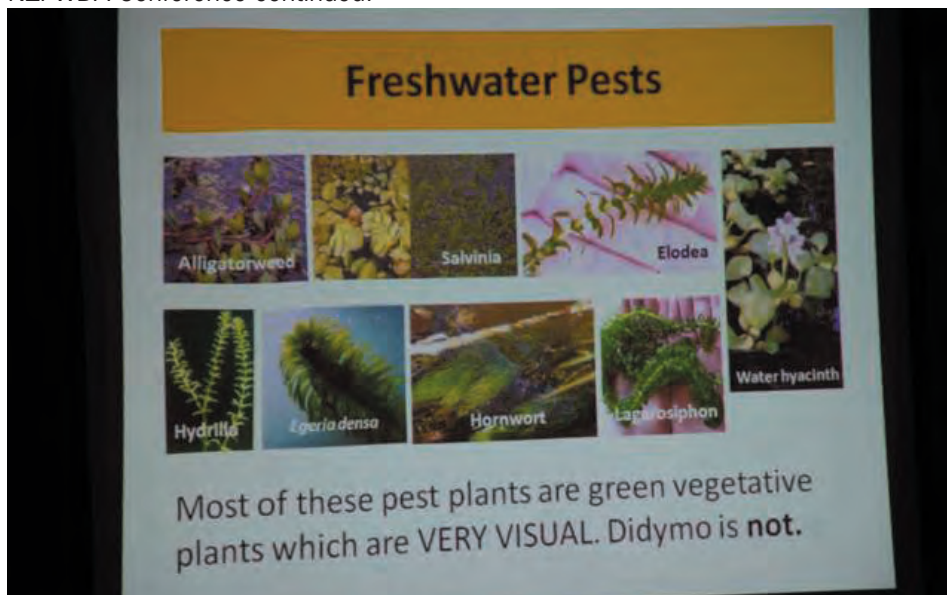
1978 Suzuki LJ50



1942 Willys Jeep



Inside the 1942 Willys Jeep.



These are the freshwater pests you can see in the North Island. The South Island is declared free of hornwort.



On the screen, two of these came in, this one needs more mods to meet the criteria. At 100kmph - it left the ground!

LVVTA UPDATE - Ken McAdams. The workshop gathering has not happened yet. The lift standards are "on the back burner" as requirements for disability vehicles and trikes are currently being addressed.



On display, the 2up winch adaptor is a Multi fitting twin motor low mount winch adaptor. Suitable for: Runva, Warn, Superwinch and more.

www.2upwinchadaptors.com

FUEL CARDS: BP, Caltex and Mobil have been added to the petrol stations you can use the discount (up to 8c) card at. There is a \$10 one off fee for the card and you can choose either the National Price Card - great for rural areas (Russell, Gore) or the Off the Pump Price (ideal for built up regions).



2014 Dodge Journey RT 3.6P/6AT/SW/5DR and Suzuki on display.

Jeff Donaldson, National Operations Manager for the Freshwater Pest Partnership Programme informed us there are currently 187 waterways known to be affected by Didymo, but still over 400 waterways in the South Island NOT affected.



DIDYMO:

- can be present in its microscopic form or as a large population in bloom.
- Can live in a boat hull for weeks if the water is sloshed around.
- Can live in felt soled waders for 6 weeks.
- Water temperature does not effect it.
- The North Island is free of Didymo.



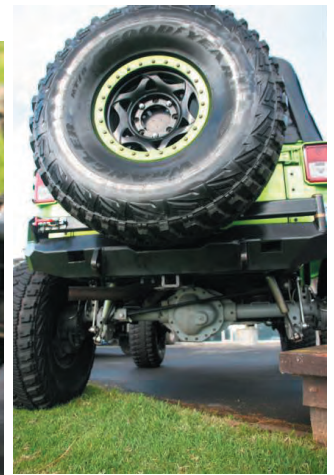
Any activity that involves getting wet in one waterway and then another risks spreading aquatic pests.

It's easy to take action to protect your patch and stop the spread of freshwater pests.

Be sure that you've done your bit to stop aquatic pests being spread.

For more information please see:
<http://www.biosecurity.govt.nz/pests/didymo/cleaning>

Peter Vahry represented Public Access New Zealand (PANZ), a non registered charitable trust, with no paid staff and all trustees are volunteers. Based in the province of Otago, the research base advocates for the rights of access for all forms of public recreation, their website is panz.kiwi.nz you can find the "Roading Law as it applies to unformed roads" a pdf document written by Brian Hayes on their site.



You can see this big Jeep on display at the Mystery Creek Field Days June 11 to 14th.

Our Insurance Broker from AON Oamaru and the Senior Underwriter from Vero Auckland explained our three main policies - Public Liability, Statutory Liability and Law Safe.

We are the gate keepers to our policy and have a social responsibility to police our own organisation by making sure Club 4x4 events and trips are sanctioned - ie your Club Executive know where and when you are going and attendants/day membership forms are complete with passenger names who were on the trip. To date there have been two incidents - 1. a trailer slid on grass and hit someone and a fatality.

INCORPORATED SOCIETIES:

ONCE A SOCIETY IS INCORPORATED IT MUST BE RUN LAWFULLY AND IN LINE WITH THE INCORPORATED SOCIETIES ACT 1908.

"A society is required to file a number of documents with the Registrar of Incorporated Societies (the Registrar). Some must be filed every year (for example, the annual financial statement) while other documents are only required to be filed as changes happen (for example, when the society's addresses, officers or rules change).

It is usual to file the following updates with the Registrar of Incorporated Societies after each annual general meeting".
<http://www.societies.govt.nz/cms/incorporated-societies/running-a-society>.

**MORNING TEA WAS SPONSORED
BY NZ4WD MAGAZINE.**

The Green Party MP Transport Spokesperson - Julie Anne Genter - ran us through the current budget/expenditure for Transport in NZ. A breakdown of where the money comes from Rates - (1 billion), RUC/Petrol/Tax (3 billion) and household (11 billion). If elected the Green Party would invest in a balanced transport system with a focus on moving more people rather than more cars.

EZi SWAP cylinders

We also fill non Ezitools cylinders with Argon, Argon/Co2 Mix, Nitrogen & Co2 at our Glenfield filling centre

LESS THAN 24 HOUR TURN AROUND
(Conditions Apply)

EZitools specialise in welding supplies and equipment. Our range of quality EZitools branded MIG, TIG, Arc, and Plasma equipment is suited to DIY and small to medium enterprises.

4D Target Court Glenfield 0627. Phone: 09 444 0357
Fax: 09 444 3509. Email: sales@ezitools.co.nz



NZFWDA President

Tony Burgess

P: 027 479 2636 ---- E: president@nzfwda.org.nz



After 4 years as NZFWDA National President, and with a change in my employment situation, a few weeks ago I made a decision not to seek re-election as National President at this year's AGM and to focus on the Northern Zone Public relations role. I have enjoyed my time as President and have been privileged to have the opportunity to meet and work with an amazing number of interesting and skilled people and I have enjoyed every minute of my time as president. (Well almost every minute) and have especially enjoyed members from all over NZ. While we have enjoyed some success over the years there is still much more to be done with a number of ongoing issues to deal with. I recently spent a bit of time reading some of the association's records from the early eighties. It is amazing that many of the same issues that were discussed then are still being discussed 30 years later, but that is a reflection that issues such as land access and keeping modified vehicles road legal need constant attention and will if we take our eye off the ball we are likely to miss out long term. Changes to DOC policies and processes look like being of enormous benefit to members but we will need to do considerable work on this relationship if we are to get the full benefit of government policies and this work has already started.

Neville Dunton has been elected as National President. Neville is highly skilled and has a wide range of contacts. I have every confidence that Neville will be able to lead the Association to better and bigger things in the coming months and years. So what has happened to the mighty Jimny in the last few months? Well I decided to bite the bullet and invest in a proper lift kit with all the right bits, rather than the mishmash of bits and pieces that I had in the past. I even decided that rather than import them myself as I have done in the past I would do the right thing and order them from a well known New Zealand 4x4 accessories supplier. That way I would get a warranty and also support a local business. Having owned several businesses I know how important local community support is so it felt like I was doing the right thing by buying from a local supplier. Sadly this has turned out to be a disappointing experience. As soon as I ordered it the full amount was charged to my credit card and I was told there would be a four week delay in receiving the kit. Disappointed that the kit which was advertised on the NZ web site was not in stock after all, I decided that it was the kit I wanted so decided to wait. After four weeks I started to email asking for an update, only to be told that it was delayed. When I queried why the delay I received

a somewhat terse email saying they could not control manufacturing delays. Not a hint of an apology.

The kit finally arrived nine weeks after I ordered it and my relief at finally receiving the kit quickly turned to disappointment. The springs were not marked as front or rear and no instructions were supplied. After checking with the supplier on the correct way to fit the springs (Who gave different advice from that given by every experienced 4x4 modifier I asked) I have a larger lift at the rear than the front. (It is not because I have a heavy winch on the front, the winch is mounted behind the passenger's seat) and the front shocks bottom out well before the bump stops touch. Two emails to the supplier over the last week have not been answered. I have dealt with this supplier in the past and have been reasonably happy, what a shame that my experience this time has been so disappointing. Don't they realise that they are competing with overseas suppliers who are very much "on the ball". Next time I might take the cheap option and buy from overseas. For what I paid I could almost have flown to Sydney and brought the parts back with me. Pity it couldn't be a better outcome.

Tony Burgess
Past NZFWDA President

NZFWDA Secretary

Wendy Johnson

E: secretary@nzfwda.org.nz



I'm Wendy Johnson and relatively new to 4wheeling, becoming involved just after Bay of Islands 4x4 Club was formed about 7 or so years ago. Before discovering 4wheeling I was involved with vintage and then classic cars. Apparently my dad could ask me at age 2 to get the 4" crescent and I would.

During my time with BOI 4x4 Club I've been Ms Temporary (when I filled in for whoever was on extended overseas trips), Secretary, Treasurer and for the last few years Zone

Delegate. Last year I stepped into the role of Northern Zone Secretary/Treasurer when Kath Jaggard became National Secretary.

At the moment there doesn't seem to be enough weekends for me and my partner to get out 4wheeling but we did enjoy a great Safari run at Ahuroa. We also had a wonderful day at The Farm, even if the old Pajero developed a nasty (and expensive to fix) CV clatter. We're planning our next trip back to Australia exploring in 4wd campers. This next trip will see

us crossing the Nullabor from Perth to Adelaide. Make sure you read Kath's account of our last trip.

Lastly, can I ask that you bear with me over the next few weeks as I find my way around the combined jobs of Secretary and Treasurer. I hope to be on track and working in with our new President, Neville, and his PA very shortly.

Then I might have time to get out and play in the mud over winter.

Wendy Johnson - NZFWDA Secretary.

The NZFWDA Executive are volunteers who administer the Association. Divided into three regional zone committees - Northern Zone, Central Zone, Southern Zone and a Competition Committee.

NZFWDA Northern Zone President



The recent Northern Zone AGM resulted in a bit of a re-shuffle of Executive positions. I have stepped down from President and am now Vice President. John Hickey, the previous Vice President, is the new President and Tony Burgess (who recently resigned from his position as National President) is the new Zone Public Relations Officer.

One of the most satisfying experiences I had as Northern Zone President was my involvement in the partnership established with DOC in respect of the upgrading and on-going maintenance of the Waitawheta 4WD track at the northern end of the

Kaimai-Mamaku State Forest Park. I referred to this partnership in my last Trail Torque article. Unfortunately, there has been a worrying development since then relating to renewed concerns expressed by the Waikato Regional Council (WRC) in respect of the siltation of adjacent waterways caused by run-off from the 4WD track. Ces Horan (Thames Valley 4WD Club) and I recently took part in a partial walk-over of the track with DOC and WRC staff to identify some of the problem areas. We are currently awaiting advice from WRC as to what action they require

to be taken in order to address this issue. I intend to continue my involvement in this matter on behalf of the Northern Zone with the aim of ensuring the track remains available to all four-wheelers. I would also like to take this opportunity to thank Northern Zone club delegates for their help and support during my time as Zone President and to confirm my full support for the new President, John Hickey who is a member of the Auckland Land Rover Owners Club.

Russell De Luca.
Past NZFWDA Northern Zone President.

Hi. My name is John Hickey. I have been elected President of the Northern Zone. I am a member of the Land Rovers Owners Club Auckland and have been a Liaison Officer for that club for about 3-4 years. Last year (2013) I was the Vice President for the Northern Zone of the Four Wheel Drive Association. I am married to Penny, an ESOL Lecturer, and have four daughters which was why we first purchased a Land Rover Defender – as transport for our family.

I am a self-employed Lawyer. My special practice areas include Civil, Family and Criminal law and I also have considerable experience in conveyancing and property matters.

I grew up in Wellington. My first memory of four wheel drives is going with my parents and younger brother and cousin being Brendon Mikkleson's father's farm near Taihape driving up what seemed to be the top of the world in the farmer's Land Rover.

Later I discovered that my Italian uncle, Frank, after fishing in the Chatham Islands returned to Wellington and bought a Land Rover. He went off-roading near Penguin Point on the way to Eastbourne - he was watching a spider and a fly inside the cab

and drove across the rocks. The Land Rover survived and so did his pride. My first four wheel drive was the 110 purchased as a 9-seater (and converted to 11 seats) because we needed a vehicle for Penny and me, our four daughters and from time to time, friends. That was 17 years ago and we still own it. We added a hard top Land Rover 109 Stage 1 V8 because the 110 was too expensive to use as a hard truck. Brian Harvey of the Land Rover Club Auckland spent a January holiday one year with me. We stripped down the 109 from the back to the fire wall and using Land Rover parts rebuilt it as a 5-door station wagon. It is now painted Camel yellow and it is my off-roader with winch, mud tyres, side bars, etc. While I was in the process of organising to carry out that rebuild I discovered a 1956 series 1, 107 station wagon in the Trade and Exchange Newspaper. (If you think there is a theme you may be right.)

Some of the great four wheel drive trips I have been on, in addition to many great club trips with family, include those runs mixing with owners of other Four Wheel Drives such as the Motu on the magnificent East Cape with more than 50 other Four Wheel Drivers from all over the

North Island raising thousands for the local schools and community groups and SS70 with Taupo 4WD. My wife and I enjoy getting out into the real New Zealand and back blocks and making friends with other four wheelers – no matter what they drive. I have also been on a number of series 1 runs including part of the (NZ) Oxford to (NZ) Cambridge – one of the highlights was watching one truck drive off the beach onto a tarpaulin, the tarpaulin was then roped around the vehicle's sides to hold up the tarp and five men then paddled it around in the lake!

In my new job I hope I can represent all four wheel drivers in the Northern Zone so that we can work together to maintain and improve access for four wheel drives throughout the region, Taupo to Cape Reinga. If anyone has any concerns about any local matters, please contact me. I hope that the rest of the Northern Zone Committee including Russell De Luca the previous President and now Vice President Tony Burgess the new PRO to try to help.

My contact phone numbers are:
Work 09-477 0333 Mobile: 0274 531 247
Home 09-630 4904 Email:
john@hickeylaw.co.nz
John Hickey - President Northern Zone



Southern Zone President

Russell Quin

P: 03 477 0004 ---- 027 222 4879 ---- E: szpresident@nzfwda.org.nz

Another year and once again in the chair... The big issue in the south at the moment is to see what comes out of DOC's Conservation Management Strategy (CMS) which we spent so much time putting submissions together in the middle part of last year. Hopefully the four wheel drive community has made an impact on this document and DOC will have taken notice of what we put forward to them.

It was encouraging to hear at Conference Tinka Mearns Technical Advisor for DOC who presented their new strategy on increasing recreation opportunities within DOC say that she sat next to a colleague who advocated four wheel drive access on DOC lands as the way forward for all generations young and old and this was

the way forward for people to be able to easily access areas within their land based conservatories. A point that we have highlighted strongly in our submissions. John McDonald has again been busy and has organised another adventure for those lucky people who are going on his winter safari in the depths of the Canterbury High Country. At the time of writing this we have just had our first snow fall in the South so I'm picking conditions will be about perfect for this trip. We can all look forward to seeing a report from John in the next TT. We had an incident recently in Southland which involved a 4wd falling off a track and rolling several times down a bank. The rescue helicopter had to be called and a couple of injured people were taken to

hospital. This made the front page of the Otago Daily Times. The group involved were not members of the Association however it was pleasing to note that they were extremely well organized and had an EPIRB with them and were able to direct rescue people to them. It does show that having the right gear in an emergency especially when out of cell phone range pays off. A timely reminder to everybody heading out into remote places to carry emergency equipment with you. Here is the link to the article if interested. <http://www.odt.co.nz/regions/otago/299754/men-survive-60m-plunge-4wd> Get out and enjoy the winter four wheeling. Russell Quin
Southern Zone President.





NZFWDA Competitions Officer

Neville Dunton

P: 07 578 2689 ---- M: 027 446 5634



The 2013 -14 season has again proven to be tough on competitors, trucks, and support teams but I sense we have all had a great time. By close of play tomorrow we will know our new champions and I am sure we will all celebrate the successful conclusion of another competitive and challenging season of Extreme 4x4 Trials.

All of the elected Executive have contributed above and beyond the call in both their elected roles and also as members of the Executive of the Nationals Competitions Committee (ENCC). I would like to personally acknowledge all the Executive for a job well done; thank you. The cohesion within the executive has allowed us the opportunity to consider the professional and safety aspects of our sport and consequently there have been a number of initiatives this year.

Following on from the Association's decision to embrace the principles and practices of Drug Free Sport NZ the ENCC introduced random breathtesting with the first of these occurring at the first round of the season hosted by South Waikato Club. Pleasingly there were no failure of the zero tolerance standards which were introduced. There have been no failed tests during the season which is all good news for our sport.

You will no doubt have noticed some changes occurring during this season in respect to scoring system and on-site display of results. A new scoring system has been trialled this Season; a key feature of this system is being able to display real time, live scores during the day. Another key benefit is faster processing of results for the day and also for Zone and National results. Our hope

is that the new system will eliminate some of the lengthy delays experienced in past years in getting season's results compiled particularly after the final Round. To date the system has delivered as promised with results now being produced very soon after last truck has completed a Trial. Implementation will incur some modest costs but the collective view of the Executive is the new scoring system should be confirmed for commencement from the start of 2014-15 Season.

In recognition of a need to ensure our sport retained its excellent safety record, the Executive have put a focus on safety of competitors, crew, and spectators. With this in mind we implemented a more stringent check of safety frame welding during scrutineering. The results during the season have been remarkably good with just a very small number of welding repairs required before competition. The all time record number of rollovers at the Wanganui Trial (91 rollovers involving 52 trucks) certainly tested the structural integrity of many frames. There were 15 DNFs on the day mostly attributable to the number of rolls, however the good news is there were no structural failures of safety frames, and no injuries.

The death of Norm Hudson at the beginning of the Season and the sudden unexpected death of Dean Wells' partner Kirsty and baby Jake a couple of months later brought it home to me that, in many ways, we are an extended family of 4wheelers. I know these losses have been keenly felt by many. Our extended family includes many of those who are no longer active as competitors but they remain committed to our sport as members of clubs that host our Trials events or who

remain competitive but at a local level. As a member of this family of 4 wheelers I extend our sympathies and support at this time to Bevan Tahu from Twin Diffs Club in Whakatane who sadly has just lost his daughter in a car accident in Cairo.

On a similar family note but one with a happier outcome I was delighted to be asked to support one of our own with his quest to obtain a marriage celebrant licence. The application was successful and Fireman is now recognized as an official celebrant.

At this time I want to acknowledge Derek Smyth and his co-driver Todd Charman. Derek has decided to retire from competitive 4wheeling and I am sure you will all join with me in passing on our very best wishes to both Derek and Todd. They have been passionate competitors and champions over many years with Derek starting his campaign in a Suzuki LJ50 some 22 years ago. Over the past four years, they have held NZ1 twice and NZ2 twice.

Looking now to the future I confirm the usual practice for the Executive to all relinquish their positions prior to the AGM. Some of the current executive will be seeking re-election and others, like me, are deciding to call it quits. I have really enjoyed the NCO role but now wish to take a wee break from the National competitions circuit; thank you for your support over the past 4 years.

Neville Dunton
Past NZ4x4trials – National Competitions Officer.

NZFWDA Competitions Committee

National Competitions Officer - Simon Bishop

Secretary - Jenny Samson

Northern Zone Steward - Bruce McGregor

Steward - Brent Samson

Treasurer - Stacey Gwynne

Scrutineer - Shane Hazelden.



Derek Smyth and co-driver Todd Charman



National Public Relations Officer

Roger Seymour

P: 04 586 2518 ---- M: 021 424 351 ---- E: pro@nzfwda.org.nz



30 MARCH, 2014

Nick Smith

NEW CONSERVATION FUND ANNOUNCED

A Community Conservation Partnership Fund to support the work of voluntary organisations undertaking natural heritage and recreation projects was launched today by Conservation Minister Dr Nick Smith at the opening of the new Hoddly Estuary Park in Nelson.

"Thousands of New Zealanders contribute to conservation by building tracks, controlling pests, planting trees, and restoring native wildlife. This new fund is about the Government providing finance for the plants, traps, poisons, equipment and coordination to support this voluntary work," Dr Smith says.

The new fund of \$26 million over the next four years is to be distributed to community organisations in an annual contestable funding round of between \$6 million and \$7 million a year. Projects may be funded over multiple years, reflecting the time it takes to complete projects of this sort. The first round of the Fund opens today and closes on 1 May with decisions to be announced in June and July. The Community Conservation Partnership

Fund replaces the Biodiversity Advice and Condition Fund of \$3.6 million per year. The additional funding is coming from underspend and efficiency gains from last year's DOC restructuring.

"This increase in community conservation funding is part of the Government's changes for DOC to be more outward-looking and to engage in partnerships with the community and business. The criteria for the previous Biodiversity Advice and Condition Fund has been broadened to support recreation as well as conservation, to allow projects on public as well as private land, to prioritise funding for projects that collaborate with other organisations and which help New Zealanders get more involved in protecting our natural environment," Dr Smith says.

The announcement was made at the formal opening of the Hoddly Estuary Park on the Waimea Estuary that has involved extensive planting of native trees and foreshore plants, pest control and restoration of habitat for native birds like the endangered Banded Rail. Dr Smith, prior to being appointed a Minister in 2008, was chair and a trustee of the new park. "This new estuary park has been created over the last decade through thousands of hours of voluntary work and fundraising

of hundreds of thousands of dollars. It will provide enjoyment to generations of New Zealanders and International visitors with its pond walkway, native habitat, and estuarine environment. The new Community Conservation Partnership Fund is intended to help ambitious future projects of this sort," Dr Smith says.

"This new fund recognises that since DOC was established 25 years ago, there has been an explosion of community groups from Kaitia to Stewart Island formed to improve conservation of their local environment. The gains of expanding our support for this work is that we get more conservation for the taxpayer dollar, more New Zealanders active in the outdoors, and we have more people aware of New Zealand's unique conservation challenges.

"The Community Conservation Partnership Fund reflects the Government's 'blue-green' agenda of getting the community and business more involved in conservation. We believe that conserving what makes New Zealand so special is not just the Government's business, but everyone's, and this fund will help achieve that goal," Dr Smith concluded.



Central Zone President

Max Wheatley

E: czpresident@nzfwda.org.nz



The Central Zone recently held its AGM and I continue as the President. The only change to the "top table" being our Secretary, with Craig Lifford taking the role. There are sure to be some changes in Zone Delegates as well which we will pick up along the way.

From the last National executive meeting it was decided that someone from each Zone would take on a role working with John MacDonald (Southern PRO) to get some of our 4wd tracks on to the Walking Access mapping system.

I am pleased to tell you that Andy Cockcroft took up this role for Central. It is not intended to put all the tracks on the web site, just the public ones, typically those which are covered in Andy's successful books and some of the DOC tracks. Also on the WAMS web site will be contact details for local Clubs. Do take the time to visit the web site at <http://wams.org.nz> to

check out the work being done by these guys.

Off road

I have managed a few trips, the one I most looked forward to being a river trip but by the time I got to run the trip it was late in summer, the river levels higher from recent rain than I would have liked and only a small number of trucks, it didn't happen and became just a quiet drive in the hills, oh well looking forward to next summer.

A couple of weeks back I ran another navigation event that was enjoyed by most. Next year I hope to have 2 adjoining forestry blocks that will enable me to run a good sized event. If you are interested let me know.

In the workshop

Things are a little crowded at the moment,

a rash bid on trademe won a Challenger Class offroad racer, only trouble being I can't fit in the thing !! but I have found a driver. I started some jobs on that and then the Landrover Discovery lost a good deal of its oil pressure so that needed to fill the other side of the workshop.

After hopefully looking for stuck oil pressure relief valves and collapsed oil filters I dropped the sump and then on the second look I spotted it, number 1 cam bearing floating around on the cam, out with the engine, torn down and the block and cam off to the motor machinist. Report in today suggests that a new set of cam bearings will solve the problem.

Catch you next column.
Max Wheatley
Central Zone President.

Northern Zone Clubs



4X4 Challenges NZ Inc.

PO Box 37 143, Parnell, Auckland
President Tim Fensom : 027 487 1733
president@4x4challenges.org.nz
Secretary Eileen Austin : eilaustin@xtra.co.nz

4x4challenges.org.nz



Auckland Four Wheel Drive Club Inc.

PO Box 6712 Wellesley St Auckland
President Jack Talbot : 027 224 4215
president@auckland4wd.org.nz
Secretary Peter Vahry : 027 431 0923
secretary@auckland4wd.org.nz
Meet Third Monday of every month at 8pm,
 Vintage Car Club, Fairfax Ave, Penrose.

auckland4wd.org.nz

Bay of Islands 4x4 Club

PO Box 443, Kerikeri
President Andrew Graham
Secretary Martin Rivers : 021 293 7215 : mart.rivers@gmail.com



Bay of Plenty Four Wheel Drive Club

P.O.Box 2300, Tauranga
President Dave Smith : 021 100 4023
david394c@gmail.com
Secretary Matt Pennefather : 021 0236 8358
matthew.pennefather@live.com
Meet First Thursday of each month 7.30 pm
 Tauranga Sports Fishing Club,
 Cross Rd Sulphur Point Marina, Tga.

www.bop4wd.org.nz



Counties 4 Wheelers

PO Box 72 1394, Papakura
President Russell Biggs : 021 935 527
russell@biggsconstruction.co.nz
Secretary Lorraine Chung : 027 242 5968
Lorraine.Chung@asb.co.nz



Cozzie Four Wheelers

PO Box 4133 Hamilton
President Dom Barnes : 027 823 3018
dom@gymcare.co.nz
Secretary John Lisignoli : 021 204 5990
zl2po@xtra.co.nz
Meet Third Tuesday most months, 7.30pm
 Hamilton Cosmopolitan Club,
 Claudelands.

East Coast Four Wheel Drive Club

PO Box 2180, Gisborne
President Rod Dear : 06 868 4882 : rjandradear@hotmail.com
Secretary Graeme Dearness : 06 867 8130
graeme@graemesaudio.co.nz



Eastern Bay Twin Diff Club Inc.

PO Box 588, Whakatane 3120
President Ron Sturme : 027 226 7915
r.dsturme@xtra.co.nz
Secretary Kylie Montrose : 07 304 8801
kgwest@xtra.co.nz
Meet First Wednesday of the month,
 The Whakatane Club, 84 The Strand.

EBTDCLUB@gmail.com



Geyserland 4WD Club

PO Box 2085, Rotorua
President George Estcourt : 021 338 312
president@geyserland4wd.co.nz
Secretary Marika Fritzsche : 021 053 2555
secretary@geyserland4wd.co.nz
Meet First Wednesday of every month
 (except January) 7.30pm at 'Kurious
 Kiwi', 209 Fenton St.

www.geyserland4wd.co.nz

Kaitaia 4WD Club Inc.

PO Box 125, Kaitaia 0441
President Greg Hodgson : 09 409 4167 : greg.barb@xtra.co.nz
Secretary Dave Currie : 09 406 7518
Meet First Monday of the month, 7pm, Kaitaia RSA.

kaitaia4x4club@hotmail.com



Kauri Coast 4WD Club

PO Box 18, Dargaville
President Chris Kemp : 027 441 6515
Secretary Serena Carran : 09 439 0064
kauricoast4wdclub@yahoo.co.nz
Meet Second Wednesday of the month at
 7.30pm Northern Wairoa Boating Club

www.kauricoast4wdclub.wikispaces.com



Land Rover Enthusiasts Club (Rotorua)

PO Box 2113, Rotorua 3040
President Colin Parr : 027 499 6023
partons@xtra.co.nz
Secretary Peter Kelly
peterkellynz@gmail.com

www.lrerot.wikispaces.com



Land Rover Owners Club (Auckland)

PO Box 303-006, Auckland 0751
President Jeremy Bleakley : 021 289 7009
Jeremy@albanyins.co.nz
Secretary Neil Abbott : 021 281 1509
neil.abbott@manumarine.com
Meet First Monday of the month, 7.30pm
 The Normanby Pub, Normanby Rd, Mt Eden

www.lroca.org.nz



Manukau Four Wheel Drive Club Inc.

PO Box 75-199, Manurewa
President Bernie Konz : 09 236 6856
Secretary Joy Browne : 09 238 7298
Meet First Tuesday of month (except Jan),
 7.30pm at South Auckland Car Club,
 1R Great South Rd, Papakura.

www.manukau4wd.org.nz



Northland Family Four Wheelers

37 Tui Glen Place, Glenbervie RD3 Whangarei 0173
President Colin Thorburn
nglasgow300@gmail.com
Secretary Brett Hogan : 09 437 7438
onehogan@xtra.co.nz
Meet Second Thursday each Month,
 clubrooms in Glenbervie.

www.nffw.net



Norwest OHV Club Inc.

PO Box 171, Kumeu Auckland
President Simon Collett
president@norwestohv.org
Secretary Dan Farley
secretary@norwestohv.org
Meet Second Monday of the month, 7.30pm
 Paddy's Bar, Shamrock Drive, Kumeu.

www.norwestohv.org

NZ Jeep Club

c/- 196 Tuapiro Road, RD3 Katikati, 3170
President Mark Spalding : 09 536 7288
Secretary Sandra Cohen : 07 549 1823 : scohen@xtra.co.nz



Port Valley 4x4 Club

President Dan Barnett : dan@drpc.co.nz

Northern Zone Clubs continued...



Rodney Off Road Club Inc.

32 Scott Rd, Stanmore Bay, Whangaparaoa, 0932

President Jimmy Kiddie : 027 222 6366

jimmycando@xtra.co.nz

Secretary Matt Carnell : 029 200 8153

mathias@atrix.co.nz

Meet Second Wednesday of every month,
8pm at the Wade Hotel, Silverdale

www.rodneymoffroadclub.co.nz

rodneymoffroadclub@gmail.com



Shore 4 Wheelers Inc.

PO Box 100-404, NSMC, Auckland

President Kerry Dornbusch : 021 277 6622

nakerz@xtra.co.nz

Secretary Laurence Fear

laurancefear@hotmail.com

Meet Second Wednesday of the month 7pm
at North Shore Rod & Customs Car
Club, 4/26 Hillside Rd, Glenfield.



South Waikato 4WD Club

C/- K Morriss 246 Parapara Rd Tirau 3410

President Craig Tomalin : 027 490 6785

Secretary Karen Morriss : 07 883 1567

Meet First Wednesday of each month
7.30pm at the Tirau Hall.

Sulphur City 4 Wheelers

c/- PO Box 10085, Rotorua 3046

President Steve Wright : 0274 507 990 : jilstev@xtra.co.nz

Secretary Andrew Sutherland : 027 482 1108

sutherlandlog@xtra.co.nz



Taupo 4WD Club

PO Box 457, Taupo

President Peter Kelly : 021 906 639

president@taupo4wd.net

Secretary Deret Hartley : 07 378 2572

info@taupo4wd.net

www.taupo4wd.net



Thames Valley 4WD Club

C/- K. Barriball, Waitakaruru, R.D.6, Thames

President Paul Bax : 027 485 8797

pmadbax@xtra.co.nz

Secretary Keith Barriball : 07 867 3330

buddog@ihug.co.nz

United 4WD supporters

C/- Almara, RD 4, Albany, Auckland

Secretary Carmen Mills : 09 426 8830 : u4wd@nzfwda.org.nz



Waikato Four Wheel Drive Club

PO Box 9313, Hamilton

President Al Laslett : alkb75@yahoo.com

Secretary Rachel Lobb : mudzuk@vodafone.co.nz

Meet Second Thursday of every month 8pm
at the Scouting Hall on Storey Ave.



Whangamata 4x4 Club

PO Box 299 Whangamata

President Graeme King

Secretary Chris Glucina

Meet Second Tuesday at 7:30pm at the
Whangamata Club.

www.whangamata4x4.org

Whangamata4x4@gmail.com



Whangarei 4WD Club

P.O.Box 1850, Whangarei

President John Ellis : 09 435 6260

johnellis1@xtra.co.nz

Secretary Kay Ludgate : 09 435 5518

secretary@whangarei4x4.org.nz

Meet Second Tuesday of month at 7.30pm
Kamo Club.

www.whangarei4x4.org

Wilderness Ridge Riders

PO Box 101-910, NSMC, North Shore City

wildernessrr4wd@gmail.com

it WASN'T that
long ago....



OFFICERS

PRESIDENT

Bruce Pattie

VICE-PRESIDENTS

Ken Riddle

Ron Madden

SECRETARY

Fiona McGinnity

TREASURER

Barry Greer

DELEGATES

Trevor Cole

Derek Booth

Bruce Skett

John Reaton

Peter Johnstone

Alister Cumming

Dave Hardwick

Vern Lill

Ron Tide

Ian Cranswick

Dave Bonnington

Erett O'Brien

Chris Squire

Bill Olson

AFFILIATED CLUBS

Far North Four Wheel Drive Club
Off Road Rally Inc
Bridge City Four Wheelers
Auckland Four Wheel Drive Club
Waikato Four Wheel Drive Club
Cross Country Vehicle Club Wgtn
Canterbury Landrover Owners Club
Taranaki Off Roaders
Quadrive Club
Eastern Bay Twin Diff Club
East Coast Four Wheel Drive Club
Hawkes Bay Four Wheel Drive Club
Taupo Four Wheel Drive Club
Mt Egmont Four Wheel Drive Club
Manawatu Overland Club
Wairarapa Four Wheel Drive Club
South Waikato Four Wheel Drive Club
Hokianga Off-Road Club
Nelson Four Wheel Drive Club
Landrover Owners Club Gtago
Peninsular Four Wheel Drive Club
Southland Landrover Owners Club
Geyserland Four Wheel Drive Club
Wanganui Four Wheel Drive Club
Bay of Plenty Four Wheel Drive Club

ABOVE: The Association at a glance on Saturday 25th March 1978. The AGM was held at Te Rapa Racecourse, Hamilton at 10.40am. Delegates came from Off-Road Rally Inc, Manawatu Overland Club, Cross Country Vehicle Club Wgtn, Auckland Four Wheel Drive Club, Mt Egmont Four Wheel Drive Club, Waikato Four Wheel Drive Club, Wairarapa Four Wheel Drive Club, Eastern Bay Twin Diff Club, East Coast Four Wheel Drive Club, Taupo Four Wheel Drive Club, Far North Four Wheel Drive Club, Hawkes Bay Four Wheel Drive Club, Canterbury Landrover Owners Club, South Waikato Four Wheel Drive Club and Bridge City Four Wheelers.

Central Zone Clubs



Capital Cruisers 4WD Club
PO Box 38725, Wellington Mail Centre



Central Districts
PO Box 130 Feilding
President Roger Bird : 06 328 5881
bird@parklee.co.nz
Secretary Nicki Andersen
cd4x4club@hotmail.co.nz

Costa Plenty 4x4 Club

c/o P O Box 130 Feilding 4740
President Laurie Goldfinch : 027 246 6133
Secretary Nicki Andersen : costaplenty@hotmail.co.nz



Cross Country Vehicle Club (Wellington) Inc.
PO Box 38-762, Te Puni, Wellington 5045
President Charles Odlin : codlin@odlin.co.nz
Secretary Terrence Broad :
terenceandberyl@yahoo.co.nz
Meet Second Wednesday of each month at
7.30pm Petone Working Mans Club,
Udy St.

www.cvc.org.nz



Feilding 4x4 Club
C/- 39 Seddon Street Feilding 4702
President Myles Norris
Secretary John de Burgh : jdeburgh@ihug.co.nz

www.feilding4x4.org



Hawkes Bay 4WD Club
PO Box 1423 Hastings
President John Jones : 06 877 5868
jandhjones@xtra.co.nz
Secretary Tracey Moss : 06 877 8400
mossimo764@hotmail.com



King Country 4WD Club
11 Waitete Road, Te Kuiti.
President Dennis Frankhouser
4wdrulz@clear.net.nz
Secretary Lynne Frankhouser
4wdrulz@clear.net.nz

www.kc4wd.co.nz



Kiwi 4x4
President Anthony Sayers : 021 989 093
president@kiwi4x4.org.nz
Secretary Reece Hearst : 027 458 9921
secretary@kiwi4x4.org.nz

www.kiwi4x4.org.nz

Levin 4WD Club

C/- 32 Greenwood Boulevard, Otaki
President Paul Shivan : 04 904 6872 : pshivan@gmail.com
Secretary Ken Douglas : 027 530 2614 : ken.douglas@xtra.co.nz



Manawatu 4WD Club
PO Box 5176, Terrace End, Palmerston North
President Phil Shailer : 021 130 7913
rotordogg@hotmail.com
Secretary Bruce Gilmore : 06 323 1119
gilmore@crosslot.com
Meet Third Wednesday of month at 7.30pm
Awapuni Community Centre,
Newbury St, Palmerston North

www.m4wdc.org.nz



Mt Egmont 4 Wheel Drive Club Inc.
PO Box 8014, New Plymouth
President Rowan Huckstep : 027 480 3097
Secretary Donna Moratti : 06 756 8422
arthur.moratti@xtra.co.nz
Meet Second Monday of month, 7.30pm at
the Inglewood Club.

egmont4wd.co.nz



Offroad Wairarapa 4x4 Club
PO Box 405, Masterton 5840
President Tony Oliver : 027 552 2202
esthero23@xtra.co.nz
Secretary Mike Rolls : 06 370 9328
mikeandlizrolls@xtra.co.nz
Meet Second Tuesday of every month
(except January) at 35 Perry Street,
Masterton 7.30pm

www.orw.org.nz



Taranaki Family 4x4 Club
82 Wallath Rd, New Plymouth
President Antony Thorpe
president@naki4wd.org
Secretary Ricki Neil
exec@naki4wd.org
Meet Last Thursday of every month at
members home, contact
Secretary for more information.

www.naki4wd.org



Tararua 4WD Club
PO Box 4 Paraparaumu.
President Brent Gibson : bgibson@qtl.co.nz
Meet Second Tuesday of every month
7.30pm at Paraparaumu RSA

www.tararua4wd.org.nz



Twin City Four Wheel Drive Club
PO Box 5137, Greenmeadows, Napier
President Floyd Du Plessis : floyd2004@hotmail.com
Secretary Graham Brooker : 027 327 8683
Meet Second Wednesday of each month at
7.30pm, Taradale RSA

www.twincity4x4.co.nz



Valley 4WD Club
13 Lemonwood Grove, Maungaraki
President Brent Samson : 021 478 633
jen_brent@xtra.co.nz
Secretary Neil Blackie : blackie.neil@gmail.com

Wairarapa Four Wheel Drive Club

PO Box 792, Masterton
President Peter Pope : 06 377 1434 : peteshirl@xtra.co.nz
Secretary Julian Rowntree : 06 377 7238 : juliancarol@xtra.co.nz
Meet Last Tuesday of every month 7.30pm at the Masterton
Cosmopolitan Club.



Wanganui 4WD Club
PO Box 973, Wanganui
President Grant Harrison : 0272 485 943
grant@hiremasterwanganui.co.nz
Secretary Sandra Sarginson : 06 343 7041
sandra.warren@xtra.co.nz
Meet First Tuesday of month, 7.30pm
Wanganui Race Course Purnell St

Wellington Family 4x4 Club

c/- 38 Bracken Rd, Newlands, Wellington 6037
President Pete Carmichael : daimler350@hotmail.com
Secretary Tom Lo : 021 2361630 : tom.swlo@gmail.com

Wellington Jeep Club

PO Box 38203, Wellington Mail Centre
Secretary Warren O'Connor : 04 234 6340 : woconnor@paradise.net.nz



Windy City Off-Roaders Inc.
c/o Howat Engineering 10 Horlor street,
Naenae, Lower Hutt 5011
President Mark Pincock (Skid)
skiddynz@live.com
Secretary Brian Hutchinson : 04 564 2699
brianhutch1@hotmail.com

Southern Zone Clubs



4X4 Events Inc

PO Box 13893 Christchurch 8140
President Ash Sergeant : 027 844 1785
 prodowhill123@gmail.com
Secretary Sangita Malcolm : 021 216 2112
 bowhillroad@hotmail.co.nz
Meet Fourth Thursday of month 7.30pm
 at Papanui RSA, 55 Bellvue Ave

www.4x4events.co.nz

Central Otago 4WD Club

P.O Box 314 Alexandra 9340
President Rodney Mason : 03 445 4750 : co4wdc@gmail.com
Secretary Curtis Crawford : 03 446 9068 : co4wdc@gmail.com

Clutha 4WD Club

P O Box 22 Balclutha 9240
Secretary Michael Sutherland : 027 446 5070
 michael.sutherland@farmside.co.nz



Land Rover Enthusiasts Club (Dunedin)

President Noel Harper : 021 454 481
 landiman@kinect.co.nz
Secretary Suzanne Bell : 027 489 0584
 suzannev.bell@gmail.com
Meet Second Wednesday each month 8pm
 Robbies Bar & Grill South Dunedin

www.lrec.co.nz



Landrover Owners Club (Otago) Inc

PO Box 47 Dunedin
President Michael Adam : 03 454 5467
Secretary Russell Quin : 03 477 0004
 russell.quin@spicers.co.nz
Meet First Wednesday of the month
 7.30pm at Hurricane Rodders Inc
 51 Victoria Rd, Dunedin

www.lroco.com



Marlborough 4WD Club

PO Box 519 Blenheim
President Tony O'Donnell : 021 960 636
Secretary Helen Horton : 03 577 8480

www.marlborough4x4club.weebly.com



Mid-Canterbury Four Wheel Drive Club Inc.

PO Box 327 Ashburton
President Stan Van Heeswyck : 027 555 8855
 president@ash4x4.co.nz
Secretary Abby Calder : 03 307 7120
 secretary@ash4x4.co.nz
Meet Last Thursday of the month, 8pm at
 Club Rooms, Tinwald Domain,
 Maronan Rd, Ashburton.

www.ash4x4.co.nz



Nelson 4 Wheel Drive Club Inc.

PO Box 228 Nelson 7040
President Tracy McCrenor : tracy@4wdnz.net
Secretary Alf Russell : alf@4wdnz.net
Meet First Wednesday of the month at
 Suburban Club, Tahunanui 8 pm.
 (except January)

www.4wdnz.net

Otago Recreational 4WD Group

12 Byron Street, Mornington, Dunedin 9011
President Graeme Thompson : 027 483 4285
 Graeme.Thompson@otagodhb.govt.nz
Secretary Greg Carroll : 03 486 1733 : gregc5nz@gmail.com

www.or4g.org.nz



Shotover 4WD Club

PO Box 1503, Queenstown
President Nick Hazlett : 021 176 0766
 president@shotover4wdclub.co.nz
Secretary Leigh Carpe
 secretary@shotover4wdclub.co.nz
Meet First Wednesday of the month
 7.30pm at St John Ambulance
 Rooms, Douglas St, Frankton,
 Queenstown.

www.shotover4wdclub.co.nz

South Island Deaf 4x4 Club

c/- 6 Bellina Place Broomfield, Christchurch
President John Witchall : 021 048 5349
 s.i.deaf4x4club@hotmail.com
Secretary JoAnne Williams
 s.i.deaf4x4club@hotmail.com



South Island Niva Drivers Association (SINDA)

PO Box 34 Christchurch
Secretary Greg Barclay :
 tzoperations@coincascade.co.nz
Meet Third Wednesday of the month at
 Papanui RSA, Harewood Road,
 Christchurch at 7.30pm

THE NEW ZEALAND FOUR WHEEL DRIVE ASSOCIATION...

- VALUES THE HIGHEST SAFETY STANDARDS BEFORE, DURING AND AFTER ALL 4WD ACTIVITIES.
- ENDORSES RESPECT AND CARE WHILE PARTICIPATING IN 4WD ACTIVITIES IN THE ENVIRONMENT.
- ACKNOWLEDGES THE CONTRIBUTION OF ITS MEMBERS AND THEIR VALUES.
- VALUES AND RESPECTS LAND OWNERS AND LAND USERS.
- ENCOURAGES NON- DISCRIMINATION OF ALL PARTICIPANTS.

NZFWDA ZONES

Northern Zone – North Cape to Taupo
 Central Zone – Taupo to Wellington.
 Southern Zone – the entire South Island.

For Sale

To advertise your four wheel drive bits, pieces or whole vehicles, please email editor@nzfwda.org.nz



2002 Defender 110 Td5. 98000 Km's.

Phone 022-089-2515. Or email Jim.sublettjim@icloud.com
\$31500

PA system for sale. Phone Paul 021 295 2814



4 X 4 Suzuki Speights Buggy, Competitive D Class truck and stands out in the crowd. Used to be a LJ 80 but now very modified for NZ National 4x4 trials but also a great Club truck. The main mods are Nissan 3L V6 petrol motor with Toyota SC14 super charger, Nissan auto, Hilux 3.9 ratio diffs front and rear with redline oil, coil suspension all round, 2 x air diff locks, 4 x skid steer brakes, Disk brakes front and rear, Hydraulic ram steering with hydraulic orbital steering box. Bucket seats with 4 point harness - 3 inch wide seat belts, 6 point roll cage to comp spec, Optima battery, comes with Kumho 833 tyres 35" x 12.5" x 15". Loads of other goodies done to this buggy. Heaps of spare parts. Redline oil in the diffs. Only been used 2 times in the last 3 years so time to sell and make room for new projects. This truck was built to fit 35 inch wheels cost approx \$40,000 to build. Personalised plates NOT included in sale. Contact Dwayne 021 467 885 evenings.

\$14000

Offroad GPS

Ultra-thin GPS navigator includes lane assist with real view advanced lane guidance and traffic, now enhanced with Garmin Australia & New Zealand Topographic maps.

Features: • 13.7 x 8.6 x 1.6cm unit dimensions • 480 x 272 pixel resolution • WQVGA colour TFT with white backlight • 221.1g approx weight • Rechargeable lithium-ion battery • Up to 3 hours battery life • Preloaded street maps • Voice prompts • Speaks street names • Lane assist • Auto re-route, choice of route setup, route avoidance • Bluetooth • Speed limit indicator •



Qwerty or ABC keyboard • Photo navigate • World travel clock, currency converter and calculator • Picture view • Touchscreen. Bundle Includes: Garmin Topo Australia & New Zealand map, which is ideal for hiking, hunting, camping, cycling and communing with nature. Features Include: • Coverage of National, State, and local parks, tracks, outback trails and 4WD destinations • Shows Perennial and seasonal lakes, rivers and streams, Terrain Contours, summits and elevations

Warranty: One Year Warranty. Only 80 units available.

Only \$249.00 Save \$400.00

Send your Name, Address, Phone, and closest Noel Leeming Store to:

Floyd du Plessis - President - TwinCity 4X4 Club,
 email: floyd2004@hotmail.com - for more information.



V12 twin turbo BMW Motor, solid lifters, mega squirt ecu, intercooled. Toyota Windom gearbox modified with extra clutches, in all gears, and modified valve body, with 3:1 ratio centre diff, all wheel drive, four wheel drive switch. High stall convertor Nissan diffs, Cromoly axles and cv, Mark five Hydraulic locker front and rear, operated by wheel brakes, with no self energising from side gears. Air bag suspension with tuned shocks AI engine plate solid mounting motor in frame. Hydraulic steering with self centre orbital valve. AI rap around seats. Internal beadlocked AI rims 35x12.5 x15 tyres Kumho 833. 480 hp at 7lb boost. 630hp at 12lb boost, only running on 7lb.

Contact Howie 04 5671471

\$45000

National 4x4 Trials Overall Class Results

A CLASS

| | | |
|-----|------|----------------|
| 1st | 649A | Jesse Woollett |
| 2nd | 612A | Clarrie Vazey |

C CLASS

| | | |
|------|------|-----------------|
| 1st | 588C | Kevin Hermanson |
| 2nd | 99C | Phil Conwell |
| 3rd | 261C | Darrell Osborne |
| 4th | 402C | Shane Towers |
| 5th | 280C | Rhys O'Brien |
| 6th | 36C | Archie Griffin |
| 7th | 485C | Grant Harrison |
| 8th | 79C | Dean Russell |
| 9th | 597C | Brent White |
| 10th | 586C | Rob MacLean |
| 11th | 324C | Dan Barnett |
| 12th | 557C | Marcus Thomsen |
| 13th | 446C | Shane Johnston |
| 14th | 80C | Clarrie Vazey |
| 15th | 527C | Gordon McNab |
| 16th | 106C | David Julian |
| 17th | 653C | Hayden McGill |
| 18th | 590C | Anthony Brolly |

E CLASS

| | | |
|------|------|------------------|
| 1st | 236E | Nathan Fogden |
| 2nd | 636E | Ash Senior |
| 3rd | 480E | Glenn D'Ath |
| 4th | 423E | Pierre Le Lievre |
| 5th | 145E | Neville Mather |
| 6th | 564E | Dean Jones |
| 7th | 359E | Ian Templeton |
| 8th | 312E | Tim Snape |
| 9th | 646E | Brian Hall |
| 10th | 75E | Rex Mealing |

F CLASS

| | | |
|-----|------|----------------|
| 1st | 72F | Dave Hintz |
| 2nd | 335F | Steve Morley |
| 3rd | 90F | Paul Taylor |
| 4th | 96F | Bruce Gilmore |
| 5th | 302F | Phil Baylis |
| 6th | 584F | Blair Stanley |
| 7th | 433F | Warwick Farmer |
| 8th | 159F | Micheal Black |
| 9th | 542F | Denis Beech |

2013/2014 National 4x4 Trial Champion - NZ1 - Bryce Hunger

D CLASS

| | | | | | |
|------|------|-------------------|------|------|------------------|
| 1st | 385D | Bryce Hunger | 27th | 448D | Scott Biggs |
| 2nd | 476D | Mitch Seymour | 28th | 449D | Jarred Biggs |
| 3rd | 222D | Hamish Auret | 29th | 211D | Lorraine Chung |
| 4th | 777D | Mike Gee-Taylor | 30th | 644D | Kurt Johnston |
| 5th | 42D | Brian Howat | 31st | 656D | Sam Thomsen |
| 6th | 189D | Neil Moratti | 32nd | 574D | Zane Edlin |
| 7th | 553D | Rowan Huckstep | 33rd | 660D | Tim Singleton |
| 8th | 350D | Dean Foster | 34th | 40D | Philip Shailer |
| 9th | 101D | Ray Hill | 35th | 228D | Russell Biggs |
| 10th | 396D | Craig Hutchison | 36th | 472D | Rupert Curry |
| 11th | 11D | John Cowper | 37th | 370D | Dean Wells |
| 12th | 951D | Arthur Moratti | 38th | 10D | Graeme Kingstone |
| 13th | 44D | Phil Cameron | 39th | 460D | Andrew Garner |
| 14th | 23D | Neville Dunton | 40th | 35D | Peter Murphy |
| 15th | 536D | Wayne Buckthought | 41st | 442D | Tania O'Brien |
| 16th | 375D | Brent Ward | 42nd | 416D | Shane Ohagan |
| 17th | 50D | Warren Jeffrey | 43rd | 632D | Philip Hobart |
| 18th | 171D | Ray Rasing | 44th | 413D | Dan Cowper |
| 19th | 249D | Shannan Wellman | 45th | 604D | Trevor Dean |
| 20th | 202D | Kevin Galbraith | 46th | 614D | Tom Baeriswyl |
| 21st | 429D | Sean Fitchett | 47th | 256D | Mike Boston |
| 22nd | 65D | John McGonigle | 48th | 507D | Colin Thorburn |
| 23rd | 149D | Steve Lacey | 49th | 6D | Reuben Mason |
| 24th | 581D | Jeremy Malcolm | 50th | 43D | Shane Beech |
| 25th | 400D | Scott Love | 51st | 477D | Graeme Goble |
| 26th | 7D | Derek Smyth | | | |

4x4 Events/Trips/Runs

All due care has been taken entering these details, NZFWDA cannot take responsibility for any changes or inadvertent inaccuracies. Potential participants should contact the event organiser.



21 JUNE 2014

MUD CHASER 4 x 4 Mud Drags.
Site: 80 Tahuna Road, Te Teko starts 8.30am.

Anyone can enter their own truck to race for \$50.
Spectator Prices: Adults- \$10 Kids- \$5
Family passes \$20 (2 adults/2 kids).
Hot food, hot drinks and kidz zone on site. Go for a ride in an off roader 4 x 4 through the mud for only \$10!
Email mudchaser@outlook.com for an information pack.

04 - 06 JULY 2014

MWC Round Two - Christchurch - Oxford. Limited to 40 vehicles.
Clubmans A (max tyre size 840mm). Clubmans B (840mm to 930mm). Rules as per Mainland Winch Challenge Rule Book available at: www.mainlandwinchchallenges.co.nz



19 - 20 JULY 2014

Possum Palace Winch Challenge 2014.
Omana - Northland. Entry Fee \$200.
Classes: Modified, Challenge and Club. Both driver and co-driver must be affiliated to the NZ4WDA through either an affiliated club or United 4x4. Proof of 3rd party insurance must be provided.
Run under 4x4 Challenges NZ Inc rules.
Contact Andrew Gibson: 021 0298 5475 or Caleb Thompson: 027 683 4327.

01 AUGUST 2014

MWC Round Three - Dunedin - Ceder Creek. Limited to 40 vehicles. Clubmans A (max tyre size 840mm). Clubmans B (840mm to 930mm). www.mainlandwinchchallenges.co.nz

05 - 06 SEPTEMBER 2014

MWC Round Four - Queenstown - Crown Range.
See www.mainlandwinchchallenges.co.nz for details.

03 - 05 OCTOBER 2014

MWC Round Five - Timaru - Makikihi.
See www.mainlandwinchchallenges.co.nz for details.

18-19 OCTOBER 2014

MANUKAU WINCH CHALLENGE - Onewhero. Further details www.manukau4wd.org.nz

08-09 NOVEMBER 2014

Ahuroa Fundraiser. As per previous years, overnight tenting.
Registrations by 26th October. Contact jimmycando@xtra.co.nz

14 NOVEMBER 2014

NZ1 Winch Challenge. Based in Christchurch. Public day Saturday. See www.mainlandwinchchallenges.co.nz

OFFICIAL RESULTS OF THE SUPERWINCH MAINLAND WINCH CHALLENGE ROUND 1.

OUTLAW:

| | |
|-----|---|
| 1st | - Sav and Scotty (Team Superwinch Nelson) 1180pts |
| 2nd | - Mike and Sheryl (Blenheim) 1135pts |
| 3rd | - Bernie and Craig (2up Manukau) 1048pts |
| 4th | - Andrew and Nick (Timaru) 1037pts |
| 5th | - Peter and Nathan (Manukau) 966pts |
| 6th | - Trev and Grant (Blenheim) 208pts |

CLUBMAN:

| | |
|-----|---|
| 1st | - Neil and Ann (Nelson) 1150pts |
| 2nd | - Jimbob and Paul (Manukau) 915pts |
| 3rd | - Andrew Reeves and Co-driver (Chch) 900pts |

OPEN:

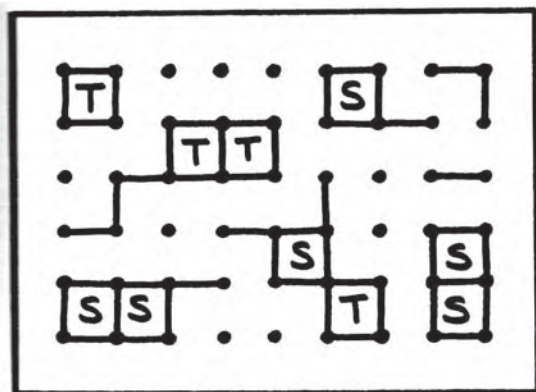
| | |
|-----|---------------------------------------|
| 1st | - James and Ben Keys (Nelson) 1135pts |
| 2nd | - Rowan and Chad (Nelson) 1127pts |
| 3rd | - Gordon and Chris (Nelson) 1104pts |
| 4th | - Malcolm and Dave (Timaru) 1035pts |
| 5th | - Karl and Jamie (Blenheim) 745pts |

Photos: <https://www.facebook.com/pages/Mainland-4WD-Winching/193058397506424>



NZFWDA Kids Page

Can you spot the five differences between these photos?



Dots and Dashes

WHAT YOU WILL NEED: Two or more players, Pencils, Paper.

WHAT TO DO: Draw lots of rows of dots on the paper first. The number of dots you draw will determine how long the game will last.

The players now take it in turns to draw a line connecting one dot to another. You can draw the lines any direction but diagonally. The aim of the game is to form squares between four of the dots.

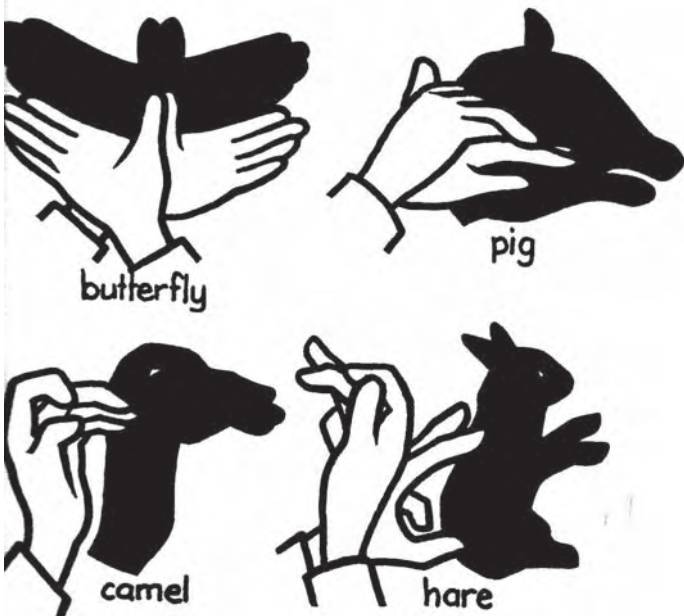
The person who draws the last line which forms a square 'owns' that square and writes their initial in it. They then have another turn.

If a single line makes two squares, that player 'owns' both squares but only gets one more turn. Help your children with the strategies of the game so they understand not to make it too easy for their opponent.

At the end, tally up the square to see who is the winner.

WHAT DO YOU CALL AN ALLIGATOR IN A VEST? AN INVESTIGATOR

SHADOW PUPPETS



FACTS

The "sixth sick sheif's sixth sheep's sick" is said to be the toughest tongue twister in the English language.

Wearing headphones for just an hour will increase the bacteria in your ear by 700 times.

You breathe on average about 5 million times a year.

The world's oldest piece of chewing gum is over 9,000 years old!

Glass recycling is often sepatated into colours because glass keeps its colour after recycling.

160 cars can drive side by side on the Monumental Axis in Brazil, the world's widest road.

Spot the difference answers: 1 - Man on left now has long pants, 2 - Man in hat and glasses appears behind the vehicle, 3 - Taranua 4 wheel logo gets bigger, 4 - sticker on side of vehicle disappears, 5. blue strip under vehicle is gone.