

Established in 1974, the objective of the Association is to further and improve Four Wheel Drive activities in New Zealand.

As a member of the NZFWDA, you become an integral part of this effort to ensure that present and future generations can continue to enjoy our country in four wheel drive vehicles.



MARCH 2014 - MAY 2014

Next issue June 2014 - August 2014

Getting close to the trig point...

PHOTO: Andy Trestrail



IN THIS EDITION

General News.....	3
Extreme makeover – Backcountry Hut Edition (Veronica’s Facelift) -	4-8
Charging for vehicle recovery.....	9
Didymo - driving in waterways	9
NZFWDA Executive Reports.....	10-13
Northern Zone Clubs	14 - 15
Central Zone Clubs.....	16
Southern Zone Clubs.....	17
For Sale	18
4x4 Club Events	19
Kids Page	20



Old hut ruin lining - nitro glycerine. **Extreme makeover – Backcountry Hut Edition (Veronica’s Facelift) Page 4**



Read about what Southern Zone Public Relations Officer John MacDonald has planned on the Rakaia River page 13.

ROAD CLOSURES

Thompson Track Road between Katikati BOP and Te Aroha Hauraki Plains will be closed to through traffic for logging operations from Monday 17 February 2014 - Friday 30 May 5am - 4pm (excluding public holidays and weekends). Access to the Summit from the Katikati side and for 6km from the Te Aroha side will not be affected. Keith Davenport Operations Manager.

Voluntary closure please of the Ngaroma block, during April and May to give the hunters a fair go.

The “Ngaroma” Block is a DOC shared area that the KC4WD Club has helped make useable to 4x4 vehicles. No native timber to be cut as per DOC stipulations. See <http://www.kc4wd.co.nz/> for more details.

Puketiro Road. As of 31 Jan 2014, the Puketiro side of the Zigzag is closed due to logging operations. For more details see <http://arac.org.nz/>

Waitawheta Track is closed to four wheel driving every year from 1st May until the Friday immediately before Labour Weekend so as to avoid damage which would otherwise occur over the wet winter months.

Trail Torque Editing: Bobbie Kincaid : editor@nzfwda.org.nz
Postal Address: New Zealand Four Wheel Drive Association Inc.
 PO Box 90960, Victoria Street West, Auckland 1142
Website: www.nzfwda.org.nz
Facebook: <https://www.facebook.com/NewZealandFourWheelDriveAssociationInc>

DISCLAIMER: The opinions expressed in this issue are those of the contributors and not necessarily those of the Association, it's Executive Members or the Trail Torque Editor.

GENERAL NEWS

General Business discussed at the Executive Meeting 9.30am Saturday 22 February 2014, Wellington.

- Conference and AGM 2014
 - Young Driver of the Year Award
 - McMinn Trophy
- NZ Walking Access Commission Forum / Mapping system
- DoC (new partnership)
- Database/Website
- Trail Torque
- Sponsorship
- New Club Applications:
 - Desert Defenders
 - Off Road Aotearoa
 - ARAC Maintenance Division
- Business Plan
- National Competition Regulations
- Remit to Constitution – Committee Meeting
- Skype Meetings

Next Executive meetings:

Sunday 30th March, Skype.

Friday 23 May AGM/Conference

The New Zealand Four Wheel Drive Association 40th Annual Conference and Annual General meeting will be held at Waipuna Lodge 58 Waipuna Rd, Mt Wellington, Auckland on 24th and 25th May 2014.

The list of speakers will cover a wide range of subjects. Our key note speaker will be Julie Anne Genter, Green Party Member of Parliament and Transport spokesperson who will be answering the question, "Is the rising influence of the Green Party a threat to our recreation". Julie Anne is a highly experienced speaker with many awards for her speaking engagements. I am sure that she will be a very interesting speaker.

A yet unconfirmed speaker will be providing technical information of interest to our members.

Tinaka Mearns, Technical Advisor – Recreation, Department head office will be giving information on partnerships between DoC and NZFWDA.

Rose Bird from the ministry of Primary Industries will be talking about how 4x4 vehicles have been spreading didymo and what you should be doing about it.

A subject that we receive many queries about is insurance, so our Insurance Company (Vero) will be addressing the meeting to give definitive information on our insurance.

There will be displays of some amazing 4x4 vehicles for you to check out too.

A solicitor will be providing information on a range of aspects related to running a club and association.

A representative of Public Access New Zealand will be discussing the latest trends' related to land access issues.

And as always, there will be an update from LVVTA regarding modified vehicles.

Sunday will be the AGM. All positions will be up for re-election and we are looking for volunteers to take on positions. We are aware that our treasurer will not be standing for re-election and we will need to find a new treasurer.

There is also a remit that seeks to shorten the time it takes to change our rules.

Looking forward to seeing you all at the conference.

Tony Burgess, NZFWDA President.

Nominations are open...

Written nominations must be received by the NZFWDA Secretary before Saturday 10th May 2014.

The lucky recipient of this years award will be named on Saturday 24th May 2014 at the NZFWDA Conference evening event.

Please contact the NZFWDA Secretary for criteria.
secretary@nzfwda.org.nz



NZFWDA CONFERENCE / AGM 2014

24 & 25 May 2014

Venue: Waipuna Hotel & Conference Centre, 58 Waipuna Road, Mt Wellington, Auckland

NZFWDA Conference Registration from 9:00 am - Conference cost to delegates is \$40 (dinner not included)

Saturday Evening Dinner will be held at the Waipuna Hotel - details and cost to be advised.

NZFWDA Annual General Meeting to be held Sunday 25th May – start time to be advised

Accommodation: at own expense, available at Waipuna Hotel & Conference Centre

Conference special \$125 per room (excluding breakfast) Phone: 0800 924 786

Website: www.waipunahotel.co.nz On-line booking promo code: NZFWD2305

Extreme makeover **Backcountry Hut Edition** (Veronica's Facelift)

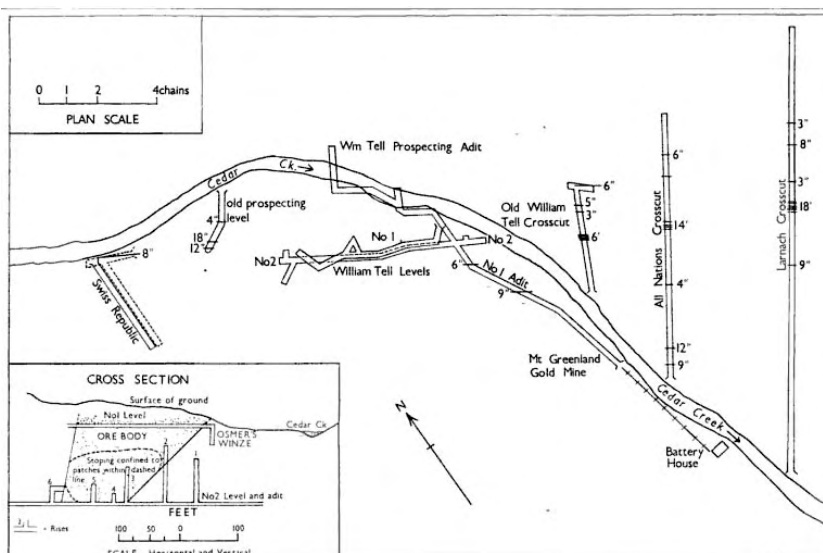
Story and Photos by Andy Trestail

Mt Greenland rises 905m above Ross on the west coast of the South Island. Ross has a rich gold mining history dating from the mid 1800's. In 1909 "The Honorable Roddy Nugget" was discovered in Jones Creek which runs alongside the start of the Mt Greenland track. At 99oz it was/is the largest nugget ever found in New Zealand.

Almost 20 years after the original 1865 gold discoveries in Ross, gold bearing quartz reefs were discovered high on the south-east side of Mt Greenland in Cedar Creek. The Cedar Creek Reefs were mined sporadically for over 80 years whilst the miners stayed at the little township of Veronica.



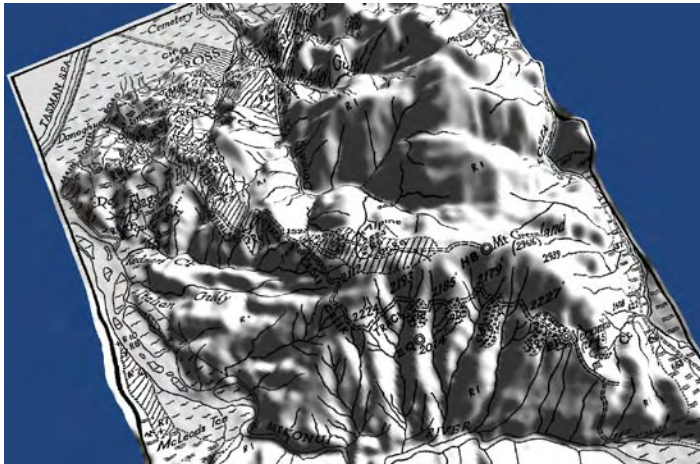
One of the mudstone climbs, much slipperier than it looks



Cedar Creek Underground workings 1945

- **1884** the gold bearing quartz reefs in Cedar Creek are discovered by John Gagliardi.
- **1885-1887** numerous claims are staked in Cedar Creek, Swiss Republic, Larnach, All Nations and William Tell to name a few.
- **1887** a crushing battery is installed by the William Tell Company.
- **1888** The Grey River Argus reports; "Veronica, the township on the ridge above the creek, is showing signs of vitality – a hotel, two stores and other buildings". The little settlement is named after John Gagliardi's daughter.
- **1890** the easily won gold in the William Tell claim has then been taken and the original battery was sold and moved to the Minerva Mine at Blackball. None of the other claims are very successful and the removal of the crushing battery is the final nail in their coffin.
- **1896** The Alpha Special Syndicate buys up all the old claims but abandons them shortly after.
- **1913** The Mt Greenland Gold & Quartz Mining Company is formed and extends William Tell No 2 level with good results.
- **1917** Success in the William Tell No 2 level results in a new 5 headed stamping battery being installed. It yields just over 2000oz of gold at approx 1oz/ton of rock. The lode is lost when the tunnel reaches a fault and they are unable to locate the quartz lode beyond it.
- **1921** The Mt Greenland Gold & Quartz Mining Company runs out of capital and operations cease.
- **1929** the William Tell claim is taken up by a Mr Bierwirth who located the lode beyond the fault and successfully worked it until 1937 recovering 1900oz of gold at 0.7oz/ton of rock.
- **1937** (approx) Bierwirth sold the claim to Greenland Gold Ltd for \$20K. At great expense they added another 5 heads to the battery and cyanide tanks as they believed that there was still 25,000 tons of payable ore to be had.
- **1941** After only crushing about 30 tons of ore, Greenland Gold Ltd got into financial difficulties and went into liquidation.
- **1970** (approx) The United Mining Company investigated the old workings, added the 4wd track from the summit to Veronica and built a new hut. They also ran out of capital and apparently did very little actual mining.

Thanks to Mr Gagliardi and all those who followed him there is a challenging 4wd track which runs for about 11km over the summit of Mt Greenland and down to Veronica. I first visited Mt Greenland summit in Aug 2011 but we did not continue much past the trig point as at that time we were unaware that there was anything to see further on. Veronica is not mentioned on any modern maps.



Map from 1945 stretched over topographic wire frame using GPS software - shows location of Veronica but no zigzag track from summit yet built

In Aug 2012 SINDA visited again but this time we had done some research and planned to spend the night at Veronica. We had spoken with a local 4wder, Pat Burrows (who is now a SINDA member) who had told us that there were still the remains of the settlement at Veronica, a hut and possibly an old stamping battery which were worth exploring. He also warned us however, that the track between the summit and Veronica was very steep and loose. He was not wrong!

SINDA's 2012 "Over The Top" trip was awesome. We headed down to Veronica to find the whole area badly overgrown with gorse. The only space to park was on the track and just getting out of the truck was a challenge. The first hut we came to was the only one fully standing and weather tight. Circa 1970 it has 2 bunks, modern ply lining and a stove with wet-back. Staying the night gave us time to explore the ruins of the old hotel, miner's huts and the mines down in the creek.

Sadly the roof of the old hotel now lies on the ground but it was a sizeable building with 2 brick fireplaces. Further down amongst Manuka we found the remains of several much older miner's huts. The walls of these huts were lined in a much more "vernacular" way, Gelignite and Nitro-glycerin boxes!

Onwards on foot we descended into Cedar Creek to look for the half-dozen mines which were driven horizontally into the steep sides of the creek. It's pretty hard going heading downstream then down a waterfall before we found the mine entrances. We had a look around inside to find the steel capped timber tram rails still mostly intact under the water and mud and the roof covered in glowworms.

We figured that the old crushing battery site must be beyond the next downstream bluff which has a very man-made looking notch cut into it where the tram rails must have run. We were correct and a bit more scrambling



Heading down to Veronica - Miconui River in the distance

Grey River Argus 1888

Several citizens of Greymouth interested in the Ross reefs left for Cedar Creek on Friday and Saturday last to inspect the ground for themselves. The *West Coast Times* says that the news from there is encouraging — "Veronica, the township on the ridge above the creek, is showing signs of vitality—a hotel, two stores and other buildings being erected. The winze in the William Tell is now down a depth of 27 feet, carrying good gold. The low level tunnel is in a distance of 700 feet,



At the grey mudhole



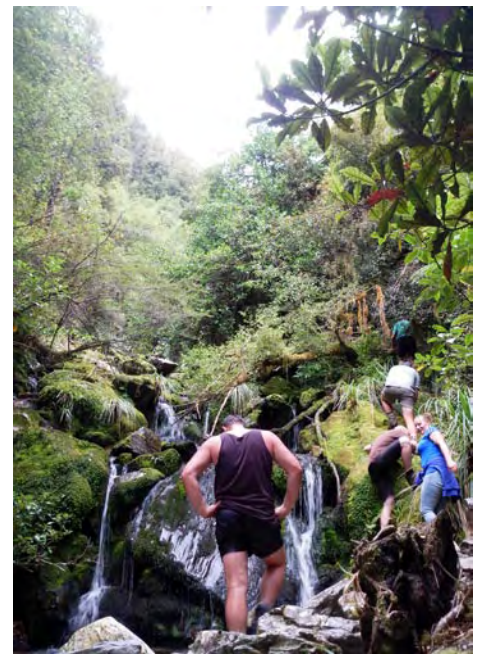
At the summit



Mine tunnel - William Tell.



Old Winch at battery site.



Heading back up Cedar Creek from the mines- Very steep and difficult going



Battery a.



Battery b.



Old Miners hut ruins.

through bush brought us to a 10 headed crushing battery with remains of its pelton wheel, shaking tables, pulleys and belts. Just downstream are the old cyanide tanks.

Fast forward to late 2013 and whilst yarning with Pat and his wife Karen during the NZFWDA Southern Safari we discover that Karen's father actually built the 1970's hut at Veronica. Pat also tells us that he has visited it recently and the roof is very rusty and has started to leak above the bunks. Its days are numbered if something is not done.

We hatched a plan for a repair mission early in the New Year. John McDonald had kindly decided to redistribute the profits of the Southern Safari among all the clubs which helped organise and host it. SINDA decided that this cheque would be used to fund the materials for the repair and it was all on.

Waitangi day 2014 saw 8 trucks and 16 people roll into Ross, 3 of them having roofs loaded with corrugated iron and timber. The rest were loaded with all manner of cordless tools, a small generator, building materials and keen people. Anyone who knows the track will know that it is a challenge on any given day but add a couple of hundred kg's of building materials, especially on the roof and you're in for a very interesting drive.

About 2 minutes past the pub in Ross its time for low-range and the fun begins. This track has a bit of everything in

the 4wd book. A steep section of small rounded river rocks near the start leads to a washed out culvert on an awkward bend then onto about 500m of very steep, very rutted and very slippery mudstone nicely lubricated with a coating of green algae. Above this the track leads to the only real patch of mud but it's usually a stopper for one or two in any given convoy. This grey mud is very sticky and you really don't want any in your radiator as there is still a long climb ahead.

Above the grey mudholes the track improves for a few kms but is badly overgrown with gorse. We all stopped and cut back about 1km of it before continuing on our mission. Onwards and there are very steep sections of track with some tight bends. Off-camber clay gullies and washouts are followed by sections of loose shale and rocks. Then with the summit in sight, the rock garden, a stretch of large loose boulders and rock steps which is probably the most difficult section to negotiate. Once past the boulders there are some deep ruts to avoid and then it's the summit.

Past the trig point the track descends to a large clearing before turning right and heading down to Veronica which sits at about 650m. This stretch of track did not exist before about 1970 and access to Veronica prior was via a pack-track which followed the contour of the southern slopes at about 700-750m. It's steep! 3 or 4 zig-zags drop about 140m of altitude in just over 280m of track and is loose sharp shale with the odd large boulder to watch out for.



Just arrived at Veronica, engulfed in gorse.



Work in progress...



The new bar...

Team clearing the gorse from the track



New firewood store.



New long drop.



Finished - North.



Finished - South.

Low tyre pressures and a steady throttle are the key to driving back up here. Spinning a wheel on this jagged stuff would not be good for the tyres! It's probably no worse than the worst bits of the drive from Ross to the summit, however it's worth noting that this is a dead end track. There is no way out to Totara Valley Rd below!

Below the zig-zags the shale disappears and the track levels out to the old settlement. This last 1km or so is probably the best bit of the whole track and gently winds through manuka. The track does carry on past Veronica and down into the creek, a distance of about 400m.

However about halfway there is a small clearing just big enough to turn a truck around and the track turns hard right. I would strongly advise against going past this clearing as the track deteriorates rapidly and there is nowhere to turn around.

We had split into 2 groups whilst clearing the gorse but we are all at Veronica by mid-afternoon with all the building materials intact and apart from getting through the grey mudhole we had not used the straps or winches at all. I was tail end Charlie and was amazed to see that the back section of roof had already been removed by the time I



Team around fire.

“The hut now has a new roof, repaired chimney, firewood store, a long-drop, a new door handle and bolt, a bar ... new bed slats, an outdoor fireplace with log “chaise-longue”...”

arrived revealing not only pink batts between the ply lining and the roofing iron but more importantly, no rot in the purlins where the roof had been leaking. This was a well built hut!

Pat and Karen stayed and helped for the rest of the day before heading home. The remaining 14 of us stayed for the next 2 nights and the team worked wonders. The weather was perfect the whole weekend and it was a good team project with enjoyable evenings around the new outdoor fireplace. The hut now has a new roof, repaired chimney, firewood store, a long-drop, a new door handle and bolt, a bar (a personal favourite), new bed slats, an outdoor fireplace with log “chaise-longue” and the earth has been dug away from the cladding at the end of the hut. We also cleared all the gorse around it so there is now plenty of room to park and pitch tents etc.

The views and dawn chorus at Veronica are stunning. There is a nice hut to stay in with 4 beds and room for a couple more on the floor. With a challenging 4wd experience thrown in it's well worth a visit. I would certainly not tackle it alone but 3 or more vehicles with recovery gear and some experience and you will have a ball. It's also probably best avoided in the wet unless you relish a real challenge. If you do visit spend a half hour on the gorse on the way up.... and please

leave the hut how you found it.

A word of warning if you are planning to visit the stamper battery and mines. It is for the fit and sure footed only! The creek is extremely steep with rocks and waterfalls that are as slippery as ice. Getting down the creek is no easy prospect, however getting back up the waterfalls is almost mountaineering. There is another route which heads down through the manuka behind the ruins of the old miners huts. It follows the water race for the stamper battery and is easy early on but soon becomes just as difficult and steep closer to the battery site. Having visited the site and seen the size of the castings making up the battery I had to marvel at how this was all brought into place by pack horse and hand winch!

Andy.



Trying the new chaise-lounge for size.



SINDA would like to say a big thank you to all involved. Everybody pulled together and achieved something that will hopefully be enjoyed by many for years to come. Some of the guests on the trip were not even club members and put in a huge effort. Special thanks to Pat & Karen for all the preparation and hospitality before and after.



Old hut ruin lining - Gelignite.

CHARGING MEMBERS OF THE PUBLIC FOR RECOVERING THEIR VEHICLE.

Many of our members will be like me and have been asked to help out, or have come across members of the public who have broken down or got their vehicles stuck in remote areas. Most people are only too happy to help out in this situation and it is always a good idea to help out if you can.

However I have noticed lately that there has been a trend towards charging people for towing the

vehicle. Many people see this as fair and reasonable, but members need to be aware of the legal situation when charging for vehicle recovery or towing.

Generally you will need a vehicle recovery endorsement (V) where you provide a towing service for a reward of any form. What this means is that if you charge someone for towing their vehicle, (or receive a reward, including drink) unless you have a "V" endorsement on your licence, you could receive a Traffic infringement notice (Ticket) and be fined. I understand that this has happened in the past.

There are some exceptions, If you don't receive a reward, as is the case with the vast majority of club trips, there is no problem.

A person employed or contracted by a motoring association, or an insurance company where the towing or carrying is limited to the removal of a vehicle to a place of safety is exempt, but members should be very wary if charging members of the public for recovering a vehicle.

Further information can be found here. <http://www.nzta.govt.nz/resources/factsheets/46/docs/46-v-end.pdf>
Tony Burgess, NZFWDA President.

HELP STOP THE SPREAD OF FRESHWATER PEST PLANTS BETWEEN WATERWAYS.

Freshwater pest plants can be sneaky little buggers. Sometimes a waterway is affected but the pest isn't obvious yet. Aquatic pest species can be microscopically small so unaware we spread the pest elsewhere.

Any activity that involves getting wet in one waterway and then another risks spreading aquatic pests. If you're 4WDing there's a risk of spreading aquatic pests like Didymo from one

waterway to another. Weeds like Didymo clog water ways and affect water quality, out compete our native species and can make recreational activities difficult. If you get wet in one waterway and move to another, you're a threat of transferring aquatic pests. You may not think of off road 4WDing as a water based activity but any trip that involves crossing streams, rivers or any other waterways can risk spreading aquatic pests. Assume that

every waterway you've been through may have aquatic pests in, take the appropriate action as outlined below and you can be sure that you've done your bit to stop aquatic pests being spread.

The good news is it's easy to take action to protect your patch and stop the spread of freshwater pests. Here's what you need to do to, Check, Clean and Dry.

ONLY GETTING WET IN ONE WATERWAY-

If you restrict your drive to a single water way or it's a track with no waterway crossings you're fine and there's no need to check clean and dry. Just be mindful that if you do get wet and may get wet in another waterway in the future, dry your vehicle as the next step says, it's an easy habit to get into.

A FEW DAYS BETWEEN GETTING WET IN ONE WATERWAY AND ANOTHER, CHECK AND DRY.

Check and remove any obvious plant material from tyres and the body of the vehicle and ensure that the vehicle is completely Dry to the touch and then left to Dry for at least another 48 hours before you drive through another waterway.

MOVING BETWEEN WATERWAYS ON THE SAME DAY OR WITHIN A COUPLE OF DAYS -

You need to follow these instructions between every waterway:

CHECK and remove any obvious plant material from tyres and the body of the vehicle.

CLEAN, VEHICLES AND TYRES Clean thoroughly with decontamination solution (at least 5% any common dishwashing liquid or nappy cleaner for one minute. Spray the underside of the vehicle and any other parts of the vehicle that have contacted the lake or river. A weed sprayer (a backpack sprayer for example) can be used to do this in the field. Otherwise a commercial carwash with an underside spray will also work.

It may take a bit of effort to clean your vehicle but if you follow these steps whenever you move between waterways you'll do your bit to stop the spread of aquatic pests. Always assume that the waterway you've come out of has pests in it and follow Check Clean and Dry, that way you'll know you've done your bit to protect our precious waterways.



BETWEEN WATERWAYS



NZFWDA President

Tony Burgess

P: 027 479 2636 ---- E: president@nzfwda.org.nz



Conference and AGM

Many of our members will read the title of this article and think "I don't want to be bothered with all this political BS, I just want to drive my truck" and I have a lot of sympathy for that point of view as I often think the same thing myself.

The good news is that the conference is nowhere near as boring as you may think. I can promise that you will also have an opportunity to meet many other likeminded four wheelers and there will be some very interesting speakers who will challenge your perceptions on a range of subjects related to 4x4 vehicles.

It is also an opportunity to meet keen

4 wheelers from all over the country that you wouldn't normally get to meet and to find out what the association spends your money on, ask questions and get answers direct from those in the know.

I encourage all members to come along, or at least to send a representative from every club. There are a number of clubs who haven't been represented at an AGM for several years. These clubs are missing out on the opportunity to influence the direction of 4 wheeling.

Among discussions to be held at this year's conference is a proposal for a major review of the association's

constitution. This could have a significant effect on the way that NZFWDA operates and is financed. The conference and AGM is your best opportunity to influence the direction of the Association.

The NZFWDA conference and AGM is to be held at the Waipuna Hotel in Auckland over the weekend of 24-25 May 2014.

I look forward to seeing a big group of members there. Details of remits etc will be sent to each club.

Tony Burgess.
NZFWDA President



NZFWDA Secretary

Kath Jaggard

E: secretary@nzfwda.org.nz



I hope you have all enjoyed some leisure time over the last few months and were all fit and rearing to go at the start of the new year.

My hubby Russell & I chose to spend our time in South Western Australia for a 3 week break catching the sights and finding some outback four wheel drive tracks – (read their story next issue - Ed).

The Executive meeting was held on Saturday 22 February in Wellington, unfortunately I was unable to attend. Over the last few months Neville Dunton has been looking at what options we have available to us to replace the Association Database or improve the existing one to solve the problems we have been facing with loss of data and the way the database

works for all of us. What he has found is that we are a uniquely structured organisation (which we knew anyway) and what we already have was purpose built to accommodate our uniqueness.

One of the unique things about us is that we are managed by a dedicated group of volunteers who take on the roles and have virtually no training in the positions.

Volunteers run the organisation from Club level, Zone level through to the Executive. Most of the time we all take on our roles, are handed the reins and told to "go for it". So every year we have a new group of Presidents, Secretaries, Treasurers and all the other wonderful people committed to keep the organisation going for the rest of the members.

We ask that at the moment you persevere with the Database as it is and we will endeavour to work with the developer to make what we have a more user friendly environment for you all.

The Registration Pack for the Association Conference / AGM will be sent out to your Club Secretary at the latest by the end of March and will be available on the website at www.nzfwda.org.nz. In the meantime bookings can be made at Waipuna Hotel & Conference Centre.

Looking forward to catching up with everyone in Auckland on Saturday 24th of May.

Kath Jaggard
NZFWDA Secretary.

The NZFWDA Executive are volunteers who administer the Association. Divided into three regional zone committees - Northern Zone, Central Zone, Southern Zone and a Competition Committee.



National Public Relations Officer



Roger Seymour

P: 04 586 2518 ---- M: 021 424 351 ---- E: pro@nzfwda.org.nz

RECREATION ADVISORY FORUM
24/02/2014

DOC RECREATION ADVISORY
FORUM. NZFWDA PLAYING AN
IMPORTANT ROLE.

This week I again spent the best part of one day in at the DOC Recreation Advisory Forum in Wellington. The main objective of this forum is to assist DOC create a path by which to increase recreation use of DOC land within New Zealand.

The forum is made up of DOC people plus representatives from many different recreation user groups such as Mountain Safety, Deer Stalkers, Fish and Game, Mountain Bikers and of course NZFWDA.

We, the 4WD people have a strong and well regarded input into this forum, with DOC speakers recognising the value of NZFWDA and the managed access policy which we promote.

Much discussion centres on tracks, mountain huts, and how DOC budgets are managed.

Huts and Tracks are assets on which DOC have to pay depreciation. If a carpark is resealed then the resealing material is added to the value of that asset which increases the depreciation to be paid.

If a mountain hut is renovated or rebuilt then the value increases and therefore it costs more in annual depreciation.

On the other hand if a hut is not maintained and it becomes unsafe then it can be written off, but DOC then have to pay a write-off cost being depreciation going forward that is not paid.

Sounds crazy, yes, but it is part of daily life in DOC. Maybe a user group can build and maintain a hut or a road for their use? Yes, but the risk to DOC is that the group lose interest in the asset and walk away from it. At that point it becomes an asset inherited by DOC and therefore a cost.

Tracks on the other hand are less of a budgetary problem for DOC. A track is a track with a value. If we do not put a

road surface on it then the value does not change. If it becomes blocked or overgrown and 4WD people clear it then that is only maintenance at no cost, so, DOC like that system. This is very helpful to us and is the pathway that 4WD Clubs need to be taking.

DOC policy is becoming standardised and area managers cannot make up rules outside of NZ guidelines with regard to what is and is not closed or open.

We can help Clubs bypass resistance from local DOC people who are making up rules without good reason.

It is a Government instruction to DOC to allow increased recreational use of DOC land. Yes we have to work within the CMS (Conservation Management Strategy), but there has been a big input by 4WD groups into these and this is recognised by DOC. The attitude is one of more freedom for us.

Roger Seymour, NZFWDA National Public Relations Officer

Feedback from National Recreation Forum on capital investment criteria November 2013

Group
NZ Four Wheel Drive Association

Suggested Criteria

- Access to unused tracks around NZ that cross DOC administered land is the greatest wish of the NZFWDA.
- Access to locked areas using a permit system
- Willing to assist with maintenance

Proposed Project:

- Follow lead from the West Coast CMS which includes maps of tracks identified as suitable for recreational 4WD use. Needs to be enhanced by producing leaflets similar to walking tracks.
- Consider hosting 'regional' forums in a similar manner to the Walking Access Commission to meet user groups locally.
- A wide range of access options from a number of clubs are proposed for example
 - o Tamaki River - I keep nagging the DOC man but not getting far.
 - o K□
be used quite a bit but now apparently not.
 - o Takapari Rd – Probably the most popular 4WD track in Manawatu and maybe under threat of closure I understand.
 - o Kismar Rd
- Access to TeUrewera National Park and Whirinaki Forest Park, more access in the St James and Molesworth.

Group	Suggested Criteria	Proposed Project
Tread Lightly!	<ul style="list-style-type: none"> ■ DOC should pursue a cost-benefit model only where all other opportunities are exhausted ■ That DOC attempt engagement with interested parties to assist with maintenance/development and enhancement of resources e.g. <ul style="list-style-type: none"> o i. Adopt-track? o ii. Adopt-a-hut? 	<ul style="list-style-type: none"> ■ Engage with recreation groups at a regional or field level ■ Local groups such as Akatarawa Recreational Access Committee (ARAC) work with Greater Wellington Regional Council, and have maintenance contracts with DOC in the Southern Taranaki at Waioata and in the Aorangi State Forest managing the Sutherlands Hut and associated tracks.

Other Groups:

NZDA, NZ horse recreation, Pegasus Horse Club, Peter Hurst, CORANZ, Council of Outdoor Recreation Associations of NZ, Environment and Conservation Organisations Of Aotearoa NZ, Federated Mountain Clubs, Game and Forest Foundation, Outdoors NZ, Tourism Industry Assn NZ, Mountain Safety Council, Public Access NZ, Mountain Bike NZ, NZ Four Wheel Drive Association, Trail Fund NZ, Tread Lightly!, NZ Fish and Game Council, Kiwi Assn of Sea Kayakers, NZ Federation of Freshwater Anglers, NZ Recreational Fishing Council, Whitewater NZ, NZ Alpine Club, NZ Speleological Society, WakaAma, New Zealand Recreation Association, NZ Pig Hunting Association.



NZFWDA Competitions Officer

Neville Dunton

P: 07 578 2689 ---- M: 027 446 5634 ---- E: nevd@xtra.co.nz



The 2013-14 trials season has just two trials remaining with Manawatu 4WD Club hosting Round 5 at Palmerston North on 16th March and Counties Club hosting the final at Onewhero over Easter weekend with the trial being held on 19th April.

Bryce Hunger's overall leaders position is being hotly contested by other competitors so there should be lots of excitement as we move through the final two Rounds of the season.

Central Zone competitions will conclude with the Manawatu trial and Central Zone prizegiving will be held during the post trial event.

The recently introduced random breath testing of competitors has pleasingly confirmed total compliance with zero tolerance rules.

The Wanganui 4WD Club trial on 25th January will be remembered by many competitors as one of the toughest yet. It wasn't that the obstacles were extreme or dangerous but competitors had to plan well; there was no room

for error and if a mistake was made the resulting impact with the hard ground was likely to be reasonably unforgiving. In total there were 91 rollovers involving 52 trucks, with 15 DNFs.

Valley 4WD Club trial appeared to be a complete contrast from Wanganui but the obstacles were deceptive and, again, it was necessary to plan well.

The Competitions Executive have been busy with some new initiatives this season with a particular focus on safety of competitors, crew, and spectators. Our wish is to retain our very strong safety record and with this in mind we have initiated a full structural check of all rollcages during scrutineering; a very small number of trucks have required welding repairs but overall the standard has been remarkably good. Our initiatives around marshal training appear to be working with much fewer complaints of lack of consistency in scoring.

A new scoring system has been trialled this season; a key feature

of this system is having real time, live scores on display during the day. Another key benefit is faster processing of results for the day and also for zone and national results. Our hope is that the new system will eliminate some of the lengthy delays experienced in past years in getting season results compiled particularly after the final Round. To date the system has delivered as promised with results now being produced very soon after the last truck has completed a trial. A decision regarding implementation of the system for future years will be made at the end of this season.

Competitors Conference and AGM will be held after scrutineering for the final Round; Details of remits and meeting times have already been circulated to all competitors.

Neville Dunton
NZ4x4trials – National Competitions Officer

NZFWDA AGM 2014 - 25 May 2014 -

Waipuna Hotel & Conference Centre, 58 Waipuna Road, Mt Wellington, Auckland

All NZFWDA Executive positions will be up for re-election.

NZFWDA Constitution 2002 - Section 21) General Meeting (b)

The order of business shall be as follows:

- (i) Roll call of affiliations*
- (ii) Minutes of previous Annual General Meeting.*
- (iii) Annual Report and Balance sheets of Zone Committees*
- (iv) Annual Report and Balance Sheet of the Association.*
- (v) Motions of which notice has been given pertaining to the Constitution.*
- (vi) Election of Officers and Honorary Life Members.*
- (vii) Reimbursement of expenses to Association Officers.*
- (viii) Election of Honorary Auditor.*
- (ix) Affiliation Fees and Application Fees.*
- (x) Next years conference - venue.*
- (xi) General Business.*

The NZFWDA Constitution is available for download here <http://www.nzfwda.org.nz/forum/viewtopic.php?f=9&t=9>



HELP!

**The
2015 - 2016
National Trials
Season needs
two Northern
Zone Clubs to
host events.**

**Contact NCO,
Neville Dunton
for information
and advice.**



NZFWDA Northern Zone President

Russell De Luca

P: 07 576 2202 ---- E: nthzpresident@nzfwda.org.nz



Much of our four-wheeling is undertaken on publicly owned land, managed by DOC, local authorities, and other public agencies.

An example of this in the Northern Zone is the Waitawheta 4WD track which lies to the south-west of Waihi town, at the northern end of the Kaimai-Mamaku Forest Park. The land is administered by DOC while the track itself is based on old disused logging roads which have become a popular recreational 4WD trail over the last several decades.

A couple of years ago, the Waikato Regional Council raised concerns with DOC over sedimentation of adjacent streams suspected of being caused by the use of the track by four-wheel drivers. At about the same time, NZFWDA Northern Zone delegates had identified the need for major upgrade work on the track.

Following meetings with Regional Council and DOC personnel the

extent and nature of the required works were identified and the works themselves were then undertaken by Northern Zone members under DOC's oversight. The upgrade works were carried out in two stages in late summer 2012 and 2013.

Part of the agreement with DOC is that the Waitawheta track be closed to four-wheel driving every year from 1 May until the Friday immediately before Labour Weekend so as to avoid damage which would otherwise occur over the wet winter months. Two lockable gates have been installed at either end of the track to prevent use during this period. At all other times the gates are open and the track is available for use by all four-wheelers. On 25 February this year I attended a meeting with DOC and Waikato Regional Council (WRC) staff relating to recent sedimentation of local streams again identified by WRC staff as likely to be originating from the Waitawheta 4WD track. In order to address this recurring issue

a walkover of the track is soon to be undertaken by Northern Zone representatives accompanied by DOC and WRC staff, the aim being to identify the problem areas and agree on solutions.

The current management arrangement for the Waitawheta track is a good example of how we can work with public agencies to achieve on-going access to 4WD trails throughout the country. With respect to Waitawheta, we will endeavour to maintain our current good relationship with the agencies concerned so as to ensure that this popular track continues to help meet the needs of the wider four-wheel drive community.

Russell De Luca.
NZFWDA Northern Zone President.



Southern Zone Public Relations Officer

John MacDonald

E: szpro@nzfwda.org.nz



Brass Monkey 2014

I have been working on this trip for some time now and when I sent the flyer out it filled up in 24hrs.

The trip is basically a trip in the Mid-Canterbury High Country. Because we will be travelling in our two big rivers the Rakaia & Rangitata, I am running it in the winter when the river levels are low.

This tends to make for spectacular photos (one of my hobbies) with clear air and snow right down to the river.

But it does have its draw backs, its cold, easy to solve - turn your heater

on and at night we have warm

accommodation. Then there is the snow, some times it is up on the tops and just makes it pretty, but some times it comes down. About a 6" to 10" is among the best fun you will have in the high country. The snow smooths the bumps out and it is great making fresh tracks. But if it gets too deep then we have a problem, the trucks just get stuck and then there is a lot of digging.

John MacDonald.
Southern Zone PRO.



Potts River



Reischek Hut Trip, Rakaia River

Northern Zone Clubs



4X4 Challenges NZ Inc.

PO Box 37 143, Parnell, Auckland
President Tim Fensom : 027 487 1733
4x4challenges.org.nz president@4x4challenges.org.nz
Secretary Eileen Austin : eilaustin@xtra.co.nz



Auckland Four Wheel Drive Club Inc.

PO Box 6712 Wellesley St Auckland
President Jack Talbot : 027 224 4215
 president@auckland4wd.org.nz
Secretary Peter Vahry : 027 431 0923
 secretary@auckland4wd.org.nz
Meet Third Monday of every month at 8pm,
 Vintage Car Club, Fairfax Ave, Penrose.
auckland4wd.org.nz

Bay of Islands 4x4 Club

PO Box 443, Kerikeri
President Andrew Graham
Secretary Martin Rivers : 021 293 7215 : mart.rivers@gmail.com



Bay of Plenty Four Wheel Drive Club

P.O.Box 2300, Tauranga
President Dave Smith : 021 100 4023
 david394c@gmail.com
Secretary Matt Pennefather : 021 0236 8358
 mathew.pennefather@live.com
Meet First Thursday of each month 7.30 pm
 Tauranga Sports Fishing Club,
 Cross Rd Sulphur Point Marina, Tga.
www.bop4wd.org.nz



Counties 4 Wheelers

PO Box 72 1394, Papakura
President Russell Biggs : 021 935 527
 russell@biggsconstruction.co.nz
Secretary Lorraine Chung : 027 242 5968
 Lorraine.Chung@asb.co.nz :



Cozzie Four Wheelers

PO Box 4133 Hamilton
President Dom Barnes : 027 823 3018
 dom@gymcare.co.nz :
Secretary John Lisignoli : 021 204 5990
 zl2po@xtra.co.nz
Meet Third Tuesday most months, 7.30pm
 Hamilton Cosmopolitan Club,
 Claudelands.

East Coast Four Wheel Drive Club

PO Box 2180, Gisborne
President Rod Dear : 06 868 4882 : rjandradear@hotmail.com
Secretary Graeme Dearnness : 06 867 8130
 graeme@graemesaudio.co.nz



Eastern Bay Twin Diff Club Inc.

PO Box 588, Whakatane 3120
President Ron Sturme : 027 226 7915
 r.dsturme@xtra.co.nz :
Secretary Kylie Montrose : 07 304 8801
 kgwest@xtra.co.nz
Meet First Wednesday of the month,
 The Whakatane Club, 84 The Strand.

EBTDCLUB@gmail.com



Geyserland 4WD Club

PO Box 2085, Rotorua
President George Estcourt : 021 338 312
 president@geyserland4wd.co.nz
Secretary Marika Fritzsche : 021 053 2555
 secretary@geyserland4wd.co.nz
Meet First Wednesday of every month
 (except January) 7.30pm at 'Kurious
 Kiwi', 209 Fenton St.

www.geyserland4wd.co.nz

Kaitaia 4WD Club Inc.

PO Box 125, Kaitaia 0441
President Greg Hodgson : 09 409 4167 : greg.barb@xtra.co.nz
Secretary Dave Currie : 09 406 7518
Meet First Monday of the month, 7pm, Kaitaia RSA.

kaitaia4x4club@hotmail.com



Kauri Coast 4WD Club

PO Box 18, Dargaville
President Fred Worters : 021 135 5570
Secretary Serena Carran : 09 439 0064
 kauricoast4wdclub@yahoo.co.nz
Meet Second Wednesday of the month at
 7.30pm Northern Wairoa Boating Club

www.kauricoast4wdclub.wikispaces.com



Land Rover Enthusiasts Club (Rotorua)

PO Box 2113, Rotorua 3040
President Colin Parr : 027 499 6023
 partons@xtra.co.nz
Secretary Peter Kelly
 peterkellynz@gmail.com

www.lrerot.wikispaces.com



Land Rover Owners Club (Auckland)

PO Box 303-006, Auckland 0751
President Jeremy Bleakley : 021 289 7009
 Jeremy@albanyins.co.nz
Secretary Neil Abbott : 021 281 1509
 neil.abbott@manumarine.com
Meet First Monday of the month, 7.30pm
 The Normanby Pub, Normanby Rd, Mt Eden

www.lroca.org.nz



Manukau Four Wheel Drive Club Inc.

PO Box 75-199, Manurewa
President Bernie Konz : 09 236 6856
Secretary Joy Browne : 09 238 7298
Meet First Tuesday of month (except Jan),
 7.30pm at South Auckland Car Club,
 1R Great South Rd, Papakura.

www.manukau4wd.org.nz



Northland Family Four Wheelers

37 Tui Glen Place, Glenbervie RD3 Whangarei 0173
President Colin Thorburn
 nglasgow300@gmail.com
Secretary Brett Hogan : 09 437 7438
 onehogan@xtra.co.nz
Meet Second Thursday each Month,
 clubrooms in Glenbervie.

www.nffw.net



Norwest OHV Club Inc.

PO Box 171, Kumeu Auckland
President Simon Collett
 president@norwestohv.org
Secretary Dan Farley
 secretary@norwestohv.org
Meet Second Monday of the month, 7.30pm
 Paddy's Bar, Shamrock Drive, Kumeu.

www.norwestohv.org

NZ Jeep Club

c/- 196 Tuapiro Road, RD3 Katikati, 3170
President Mark Spalding : 09 536 7288
Secretary Sandra Cohen : 07 549 1823 : scohen@xtra.co.nz



Port Valley 4x4 Club

President Dan Barnett : dan@drpc.co.nz

Northern Zone Clubs continued...



Rodney Off Road Club Inc.

32 Scott Rd, Stanmore Bay, Whangaparaoa, 0932

President Jimmy Kiddie : 027 222 6366

jimmycando@xtra.co.nz

Secretary Matt Carnell : 029 200 8153

mathias@actrix.co.nz

Meet Second Wednesday of every month,
8pm at the Wade Hotel, Silverdale

www.rodneycanoffroadclub.co.nz

rodneycanoffroadclub@gmail.com



Shore 4 Wheelers Inc.

PO Box 100-404, NSMC, Auckland

President Kerry Dornbusch : 021 277 6622

nakerz@xtra.co.nz

Secretary Paul Hudson : 09 817 9248

paulhud@xtra.co.nz

Meet Second Wednesday of the month 7pm
at North Shore Rod & Customs Car
Club, 4/26 Hillside Rd, Glenfield.



South Waikato 4WD Club

C/- K Morriss 246 Parapara Rd Tirau 3410

President Craig Tomalin : 027 490 6785

Secretary Karen Morriss : 07 883 1567

Meet First Wednesday of each month
7.30pm at the Tirau Hall.

Sulphur City 4 Wheelers

c/- PO Box 10085, Rotorua 3046

President Steve Wright : 0274 507 990 : jilstev@xtra.co.nz

Secretary Andrew Sutherland : 027 482 1108
sutherlandlog@xtra.co.nz



Taupo 4WD Club

PO Box 457, Taupo

President Graeme Wilton : 022 020 9935

president@taupo4wd.net

Secretary Simone Dasent : 027 253 3221
info@taupo4wd.net

www.taupo4wd.net



Thames Valley 4WD Club

C/- K. Barriball, Waitakaruru, R.D.6, Thames

President Paul Bax : 027 485 8797

pmadbax@xtra.co.nz

Secretary Keith Barriball : 07 867 3330

buddog@ihug.co.nz

United 4WD supporters

C/- Almara, RD 4, Albany, Auckland

Secretary Carmen Mills : 09 426 8830 : u4wd@nzfwda.org.nz



Waikato Four Wheel Drive Club

PO Box 9313, Hamilton

President Tom Douglas : 07 825 4900

douglasmonks@xtra.co.nz

Secretary Al Laslett : 027 201 0606

alkb75@yahoo.com

Meet Second Thursday of every month 8pm
at the Scouting Hall on Storey Ave.



Whangamata 4x4 Club

PO Box 299 Whangamata

President Graeme King

Secretary Chris Glucina

Meet Second Tuesday at 7:30pm at the
Whangamata Club.

www.whangamata4x4.org

Whangamata4x4@gmail.com



Whangarei 4WD Club

P.O.Box 1850, Whangarei

President John Ellis : 09 435 6260

johnellis1@xtra.co.nz

Secretary Kay Ludgate : 09 435 5518

secretary@whangarei4x4.org.nz

Meet Second Tuesday of month at 7.30pm
Kamo Club.

www.whangarei4x4.org

Wilderness Ridge Riders

PO Box 101-910, NSMC, North Shore City

wildernessrr4wd@gmail.com

“The Privacy Act requires that we don't share the information we have with anyone else and only use the information for the purpose that we collect it for, and we will never breach those requirements, even if it means that we can't offer the level of service we would like to offer.

Tony Burgess
NZFWDA President

The information we collect and use to contact members and clubs comes from a central database. The information is entered into the database by a representative from each Club, and kept up to date by that same person. This is usually the Club Secretary.

If you are not receiving Trail Torque or have other problems with the information we have on you, you first need to contact your Club secretary to ensure that the information is correct on the database that the Club controls.

The Club contact information on the NZFWDA website also comes from the central database, but it is not an automatic function.

The database has a section where Club Secretaries can enter details of who holds positions in the clubs, and contact details for these people. Every time a change is made to this information our hard working National Secretary gets an email and makes the changes on the website, but she also has a full time job and a business to run, and doesn't get paid to do NZFWDA work so sometimes there

is a delay before she is able to get the information up to date.

If the information on the NZFWDA website is out of date, firstly check that the Clubs own information is up to date on the database, and then contact the National Secretary if there is a problem.

The information that is published by commercial magazines doesn't come from NZFWDA. At this stage we don't collect permission to share that information with commercial organisations.

We are working on upgrading our systems and process so that we can keep other Organisations up to date with Club contact details using details from our database, but at this stage the only option is for each Club to advise each magazine individually of its contact details.

If you need any further information, please don't hesitate to contact:

Tony Burgess, NZFWDA President.

Central Zone Clubs



Capital Cruisers 4WD Club
PO Box 38725, Wellington Mail Centre



Central Districts
PO Box 130 Feilding
President Roger Bird : 06 328 5881
bird@parklee.co.nz
Secretary Nicki Andersen
cd4x4club@hotmail.co.nz

Costa Plenty 4x4 Club

c/o P O Box 130 Feilding 4740
President Laurie Goldfinch : 027 246 6133
Secretary Nicki Andersen : costaplenty@hotmail.co.nz



Cross Country Vehicle Club (Wellington) Inc.
PO Box 38-762, Te Puni, Wellington 5045
President Charles Odlin : codlin@odlin.co.nz
Secretary Terrence Broad :
terrenceandberyl@yahoo.co.nz
Meet Second Wednesday of each month at
7.30pm Petone Working Mens Club,
Udy St.

www.ccvc.org.nz



Feilding 4x4 Club
C/- 39 Seddon Street Feilding 4702
President Myles Norris
Secretary John de Burgh : jdeburgh@ihug.co.nz

www.feilding4x4.org



Hawkes Bay 4WD Club
PO Box 1423 Hastings
President John Jones : 06 877 5868
jandhjones@xtra.co.nz
Secretary Tracey Moss : 06 877 8400
mossimo764@hotmail.com



King Country 4WD Club
11 Waitete Road, Te Kuiti.
President Dennis Frankhouser
4wdrulz@clear.net.nz
Secretary Lynne Frankhouser
4wdrulz@clear.net.nz

www.kc4wd.co.nz



Kiwi 4x4
President Anthony Sayers : 021 989 093
president@kiwi4x4.org.nz
Secretary Reece Hearst : 027 458 9921
secretary@kiwi4x4.org.nz

www.kiwi4x4.org.nz

Levin 4WD Club

C/- 32 Greenwood Boulevard, Otaki
President Paul Shivnan : 04 904 6872 : pshivnan@gmail.com
Secretary Ken Douglas : 027 530 2614 : ken.douglas@xtra.co.nz



Manawatu 4WD Club
PO Box 5176, Terrace End, Palmerston North
President Andrew Francis : 06 376 7128
west.ridge@xtra.co.nz
Secretary Peter Robertson : 06 356 9536
p.r.robertson@infogen.net.nz
Meet Third Wednesday of month at 7.30pm
Awapuni Community Centre,
Newbury St, Palmerston North

www.m4wdc.org.nz



Mt Egmont 4 Wheel Drive Club Inc.
PO Box 8014, New Plymouth
President Bryce Hunger : 06 756 8374
Secretary Donna Moratti : 06 756 8422
arthur.moratti@xtra.co.nz
Meet Second Monday of Month, 7.30pm at
the Inglewood Club.

egmont4wd.co.nz



Offroad Wairarapa 4x4 Club
PO Box 405, Masterton 5840
President Tony Oliver : 027 552 2202
esthero23@xtra.co.nz
Secretary Mike Rolls : 06 370 9328
mikeandlizrolls@xtra.co.nz
Meet Second Tuesday of every month
(except January) at 35 Perry Street,
Masterton 7.30pm

www.orw.org.nz



Taranaki Family 4x4 Club
82 Wallath Rd, New Plymouth
President Antony Thorpe
president@naki4wd.org
Secretary Ricki Neil
exec@naki4wd.org
Meet Last Thursday of every month at
members home, contact
Secretary for more information.

www.naki4wd.org



Taranua 4WD Club
PO Box 4 Paraparaumu.
President Brent Gibson : bgibson@qtl.co.nz
Meet Second Tuesday of every month
7.30pm at Paraparaumu RSA

www.taranua4wd.org.nz



Twin City Four Wheel Drive Club
PO Box 5137, Greenmeadows, Napier
President Floyd Du Plessis : floyd2004@hotmail.com
Secretary Graham Brooker : 027 327 8683
Meet Second Wednesday of each month at
7.30pm, Taradale RSA

www.twincity4x4.co.nz



Valley 4WD Club
13 Lemonwood Grove, Maungaraki
President Brent Samson : 021 478 633
jen_brent@xtra.co.nz
Secretary Neil Blackie : blackie.neil@gmail.com

Wairarapa Four Wheel Drive Club

PO Box 792, Masterton
President Peter Pope : 06 377 1434 : peteshirl@xtra.co.nz
Secretary Julian Rowntree : 06 377 7238 : juliancarol@xtra.co.nz
Meet Last Tuesday of every month 7.30pm at the Masterton
Cosmopolitan Club.



Wanganui 4WD Club
PO Box 973, Wanganui
President Grant Harrison : 0272 485 943
grant@hiremasterwanganui.co.nz
Secretary Sandra Sarginson : 06 343 7041
sandra.warren@xtra.co.nz
Meet First Tuesday of month, 7.30pm
Wanganui Race Course Purnell St

Wellington Family 4x4 Club

c/- 38 Bracken Rd, Newlands, Wellington 6037
President Pete Carmichael : daimler350@hotmail.com
Secretary Alan Greeves : 027 448 8014
alan.geeves@slingshot.co.nz

Wellington Jeep Club

PO Box 38203, Wellington Mail Centre
Secretary Warren O'Connor : 04 234 6340 : woconnor@paradise.net.nz



Windy City Off-Roaders Inc.
c/o Howat Engineering 10 Horlor street,
Naenae, Lower Hutt 5011
President Mark Pincock (Skid)
skiddynz@live.com
Secretary Brian Hutchinson : 04 564 2699
brianhutch1@hotmail.com

Southern Zone Clubs



4X4 Events Inc

PO Box 13893 Christchurch 8140
President Ash Sergeant : 027 844 1785
 prodowhill123@gmail.com
Secretary Sangita Malcolm : 021 216 2112
 bowhillroad@hotmail.co.nz
Meet Fourth Thursday of month 7.30pm
 at Papanui RSA, 55 Bellvue Ave

www.4x4events.co.nz

Central Otago 4WD Club

P.O Box 314 Alexandra 9340
President Rodney Mason : 03 445 4750 : co4wdc@gmail.com
Secretary Curtis Crawford : 03 446 9068 : co4wdc@gmail.com

Clutha 4WD Club

P O Box 22 Balclutha 9240
Secretary Michael Sutherland : 027 446 5070
 michael.sutherland@farmside.co.nz



Land Rover Enthusiasts Club (Dunedin)

President Noel Harper : 021 454 481
 landiman@kinect.co.nz
Secretary Suzanne Bell : 027 489 0584
 suzannev.bell@gmail.com
Meet Second Wednesday each month 8pm
 Robbies Bar & Grill South Dunedin

www.lrec.co.nz



Landrover Owners Club (Otago) Inc

PO Box 47 Dunedin
President Michael Adam : 03 454 5467
Secretary Russell Quin : 03 477 0004
 russell.quin@spicers.co.nz
Meet First Wednesday of the month
 7.30pm at Hurricane Rodders Inc
 51 Victoria Rd, Dunedin

www.lroco.com



Marlborough 4WD Club

PO Box 519 Blenheim
President Trevor Jamie : 03 572 5385
 Marl4x4@slingshot.co.nz
Secretary Helen Horton : 03 577 8480

www.marlborough4x4club.weebly.com



Mid-Canterbury Four Wheel Drive Club Inc.

PO Box 327 Ashburton
President Stan Van Heeswyck : 027 555 8855
 president@ash4x4.co.nz
Secretary Abby Calder : 03 307 7120
 secretary@ash4x4.co.nz
Meet Last Thursday of the month, 8pm at
 Club Rooms, Tinwald Domain,
 Maronan Rd, Ashburton.

www.ash4x4.co.nz



Nelson 4 Wheel Drive Club Inc.

PO Box 228 Nelson 7040
President Tracy McCrenor : tracy@4wdnz.net
Secretary Alf Russell : alf@4wdnz.net
Meet First Wednesday of the month at
 Suburban Club, Tahunanui 8 pm.
 (except January)

www.4wdnz.net

Otago Recreational 4WD Group

12 Byron Street, Mornington, Dunedin 9011
President Graeme Thompson : 027 483 4285
 Graeme.Thompson@otagodhb.govt.nz
Secretary Greg Carroll : 03 486 1733 : gregc5nz@gmail.com

www.or4g.org.nz



Shotover 4WD Club

PO Box 1503, Queenstown
President Nick Hazlett : 021 176 0766
 president@shotover4wdclub.co.nz
Secretary Leigh Carppe
 secretary@shotover4wdclub.co.nz
Meet First Wednesday of the month
 7.30pm at St John Ambulance
 Rooms, Douglas St, Frankton,
 Queenstown.

www.shotover4wdclub.co.nz

South Island Deaf 4x4 Club

c/- 6 Bellina Place Broomfield, Christchurch
President John Witchall : 021 048 5349
 s.i.deaf4x4club@hotmail.com
Secretary JoAnne Williams
 s.i.deaf4x4club@hotmail.com



South Island Niva Drivers Association (SINDA)

PO Box 34 Christchurch
Secretary Greg Barclay :
 tzoperations@coincascade.co.nz
Meet Third Wednesday of the month at
 Papanui RSA, Harewood Road,
 Christchurch at 7.30pm

THE NEW ZEALAND FOUR WHEEL DRIVE ASSOCIATION...

- VALUES THE HIGHEST SAFETY STANDARDS BEFORE, DURING AND AFTER ALL 4WD ACTIVITIES.
- ENDORSES RESPECT AND CARE WHILE PARTICIPATING IN 4WD ACTIVITIES IN THE ENVIRONMENT.
- ACKNOWLEDGES THE CONTRIBUTION OF ITS MEMBERS AND THEIR VALUES.
- VALUES AND RESPECTS LAND OWNERS AND LAND USERS.
- ENCOURAGES NON- DISCRIMINATION OF ALL PARTICIPANTS.

NZFWDA ZONES

Northern Zone – North Cape to Taupo
 Central Zone – Taupo to Wellington.
 Southern Zone – the entire South Island.

For Sale

To advertise your four wheel drive bits, pieces or whole vehicles, please email editor@nzfwda.org.nz



2002 Defender 110 Td5. 98000 Km's.

Phone 022-089-2515. Or email Jim.sublettjim@icloud.com

\$31500

PA system for sale. Phone Paul 021 295 2814



4 X 4 Suzuki Speights Buggy, Competitive D Class truck and stands out in the crowd. Used to be a LJ 80 but now very modified for NZ National 4x4 trials but also a great Club truck. The main mods are Nissan 3L V6 petrol motor with Toyota SC14 super charger, Nissan auto, Hilux 3.9 ratio diffs front and rear with redline oil, coil suspension all round, 2 x air diff locks, 4 x skid steer brakes, Disk brakes front and rear, Hydraulic ram steering with hydraulic orbital steering box. Bucket seats with 4 point harness - 3 inch wide seat belts, 6 point roll cage to comp spec, Optima battery, comes with Kumho 833 tyres 35" x 12.5" x 15". Loads of other goodies done to this buggy. Heaps of spare parts. Redline oil in the diffs. Only been used 2 times in the last 3 years so time to sell and make room for new projects. This truck was built to fit 35 inch wheels cost approx \$40,000 to build. Personalised plates NOT included in sale. Contact Dwayne 021 467 885 evenings.

\$14000

Offroad GPS

Ultra-thin GPS navigator includes lane assist with real view advanced lane guidance and traffic, now enhanced with Garmin Australia & New Zealand Topographic maps.

Features: • 13.7 x 8.6 x 1.6cm unit dimensions • 480 x 272 pixel resolution • WQVGA colour TFT with white backlight • 221.1g approx weight • Rechargeable lithium-ion battery • Up to 3 hours battery life • Preloaded street maps • Voice prompts • Speaks street names • Lane assist • Auto re-route, choice of route setup, route avoidance • Bluetooth • Speed limit indicator • Qwerty or ABC keyboard • Photo navigate • World travel clock, currency converter and calculator • Picture view • Touchscreen. Bundle Includes: Garmin Topo Australia & New Zealand map, which is ideal for hiking, hunting, camping, cycling and communing with nature. Features Include: • Coverage of National, State, and local parks, tracks, outback trails and 4WD destinations • Shows Perennial and seasonal lakes, rivers and streams, Terrain Contours, summits and elevations



Warranty: One Year Warranty. Only 80 units available.

Only \$249.00 Save \$400.00

Send your Name, Address, Phone, and closest Noel Leeming Store to:

Floyd du Plessis - President - TwinCity 4X4 Club,

email: floyd2004@hotmail.com - for more information.



V12 twin turbo BMW Motor, solid lifters, mega squirt ecu, intercooled. Toyota Windom gearbox modified with extra clutches, in all gears, and modified valve body, with 3:1 ratio centre diff, all wheel drive, four wheel drive switch. High stall convertor Nissan diffs, Cromoly axles and cv, Mark five Hydraulic locker front and rear, operated by wheel brakes, with no self energising from side gears. Air bag suspension with tuned shocks AI engine plate solid mounting motor in frame. Hydraulic steering with self centre orbital valve. AI rap around seats. Internal beadlocked AI rims 35x12.5 x15 tyres Kumho 833. 480 hp at 7lb boost. 630hp at 12lb boost, only running on 7lb.

Contact Howie 04 5671471

\$45000



Four Wheel Drive Events/Trips/Runs

From the Cape to the Bluff

Email your Club Event to editor@nzfwda.org.nz

16 MARCH 2014

NZFWDA National 4x4 Trials. Round 5 hosted by Manawatu 4WD Club. Harts Road, Turitea, Palmerston North.

29 MARCH - 30 MARCH 2014

Kauri Coast 4WD Club weekend safari, fundraising for the Northland Rescue Helicopter. Limited to 60 Vehicles \$160 Driver and 1 passenger. Camping available. Contact: Serena Carran 09 439 0064 or 021 159 2720 email: aneres@xnet.co.nz

18 - 21 APRIL 2014

Zuki Central 2014 - CCVC - All profits go to Ronald McDonald House Wellington. Run somewhere in the lower North Island Easter 2014. Join like minded Suzuki owners. One day registration available. Easy (new drivers) to Medium (some experience necessary) to Class Z Force (Very experienced drivers). Find out more online www.4wdonline.co.nz or contact Zukicentral@gmail.com

19 APRIL 2014

NZFWDA National 4x4 Trials. Round 6 (Final). Hosted by Counties 4 Wheelers. 285 Tuakau Bridge, Port Waikato, Onewhero

26 - 27 APRIL 2014

Mainland Trophy - Teams Event. A series of challenging (and scenic) tracks to be driven on a rotational system over two days. You will need to be self sufficient each day. The Teams: - Drivers to be 4wd club members, 3 vehicles per team, the vehicles must have a winch, 930mm max outside diameter tyre (across), Rego and WOF. 3rd party insurance min. [proof will be required]. Standard club safety equipment. Must have bolt on tow hooks front & rear. No chains or agricultural tyres. See more online at www.mainlandwinchchallenges.co.nz

17 - 18 MAY 2014

Tour de Whanga. An event set up for the more adventurous safari people. Matariki forest based. Entry fee \$150.00 - includes 1.5 days of 4x4 fun, camping area for tents and caravans at Area School (hot showers and clean toilets), and lunch and breakfast for driver and co-driver. Extra lunch and breakfast packs available @ \$25 per head. Limited to 50 vehicles. Entry forms available at: <http://www.whangamata4x4.org/events.htm>

31 MAY to 01 JUNE 2014

MWC Round One - Nelson, Richmond. The Top of The South Winch Challenge". No thrills event. Night stages on Saturday evening. Entry price unknown. Classes as usual with requirements as per the Mainland Challenge series rules - Clubmans, Open or Outlaw. See more online at www.mainlandwinchchallenges.co.nz

All due care has been taken entering these details, NZFWDA cannot take responsibility for any changes or inadvertent inaccuracies. Potential participants should contact the event organiser.

04 - 06 JULY 2014

MWC Round Two - Christchurch - Oxford. Limited to 40 vehicles. Clubmans A (max tyre size 840mm). Clubmans B (840mm to 930mm). Rules as per Mainland Winch Challenge Rule Book available at: www.mainlandwinchchallenges.co.nz

19 - 20 JULY 2014

Possum Palace Winch Challenge 2014. Omana - Northland. Entry Fee \$280. Classes: Modified, Challenge and Club. Both driver and co-driver must be affiliated to the NZ4WDA through either an affiliated club or United 4x4. Proof of 3rd party insurance must be provided. Run under 4x4 Challenges NZ Inc rules. Contact Andrew Gibson: 021 0298 5475 or Caleb Thompson: 027 683 4327.

01 AUGUST 2014

MWC Round Three - Dunedin - Ceder Creek. Limited to 40 vehicles. Clubmans A (max tyre size 840mm). Clubmans B (840mm to 930mm). Rules as per Mainland Winch Challenge Rule Book available at: www.mainlandwinchchallenges.co.nz

05 - 06 SEPTEMBER 2014

MWC Round Four - Queenstown - Crown Range. See www.mainlandwinchchallenges.co.nz for details

03 - 05 OCTOBER 2014

MWC Round Five - Timaru - Makikihi. See www.mainlandwinchchallenges.co.nz for details

14 NOVEMBER 2014

NZ1 Winch Challenge. Based in Christchurch. Public day Saturday. See www.mainlandwinchchallenges.co.nz

NATIONAL 4X4 TRIALS FINAL



SATURDAY 19TH APRIL - EASTER WEEKEND.

HOSTED BY: Counties 4 Wheelers.

SCRUTINEERING on 18 April 2014, McRobbie's

Transport, 34 Pokeno Road, Pokeno, 2-5pm.

EVENT at 285 Tuakau Bridge, Port Waikato, Onewhero

NZFWDA Kids Page

Can you spot the seven differences between these photos?



Riddles...

1. I have four wings, but cannot fly.
I never laugh and never cry;
On the same spot I'm always found,
toiling away with a little sound.
What am I?
2. You fill up a bathtub with water and
you have a teaspoon, tablespoon, and a
cup. What is the fastest way to empty the
bathtub?
3. On a clock, how many times a day do
the minute and hour hand overlap?

Riddle Answers: 1. A fan. 2. Pull the bath
plug. 3. 22 times: 12:00:00, 1:05:27, 2:10:55,
3:16:22, 4:21:49, 5:27:16, 6:32:44, 7:38:11,
8:43:38, 9:49:05, 10:54:33. Each twice a day.

Age game calculator magic trick.

Number of players: 2

What you need: A Calculator

Give the calculator to the adult so they do the operations themselves.

Tell the adult to hide the screen from view and punch in their age.

Tell them to multiply the age by 2

Then add 1

Multiply the total by 5

Multiply that total by 10

Subtract 100

Ask the adult to write down the answer.

Taking the calculator, look at the number
on the screen. Ignore the last two
digits of the number.

The number you are left with will be the
adult's age.

Top Outdoor Spot Competition

The Top Outdoor Spot competition will be
back in 2014, giving students the chance to
share photos and short stories about their
favourite outdoor places for the chance to win.

The educational competition is being run in
term 1 on the curriculum-aligned "Both Sides
of the Fence" website, developed by the New
Zealand Walking Access Commission.

The site encourages primary and intermediate
school students to think critically about
responsible behaviour in the outdoors and
the value of outdoor access to New Zealand's
national identity. It supports English and Social
Sciences learning areas and EOTC activities,
including school camps and field trips.

Students can enter the competition, with help
from a teacher, by submitting a photo of their
favourite outdoor spot and a short description
about what makes it special to the "In My

Region" image gallery on the Both Sides of
the Fence site.

The students who send in the "Best Photo"
and "Best Description" will each win a Dash
20L day pack for themselves and a \$100 book
voucher for their schools.

All photos and descriptions sent in between
27 January 2014 and the end of the day on 14
March 2014 will be in to win.

To find out about the winning students and
entries from last year, read the 'Talented
students win Top Outdoor Spot competition'
article on the New Zealand Walking Access
Commission's website.
<http://www.walkingaccess.govt.nz/>

For more information about the Top
Outdoor Spot competition visit: <http://bothsidesofthefence.org.nz/>

FACTS



The surface of the human
skin is 6.5 square feet (2m).



Ketchup was sold in the 1830s as
medicine.



The average lead pencil will
draw a line 35 miles long or write
approximately 50,000 English words.



Of all the words in the English
language, the word "set" has the most
definitions!



A giraffe can clean its ears with
its 21-inch tongue!

Spot the difference answers: 1 - Rabbit appears on the track. 2
- All vehicle number plates are blank. 3 - Grass appears on the
left hill side. 4 - Another vehicle joins the convoy. 5 - Second
tent. 6 - More portaloos. 7 - Tyre appears on roof racks of first
vehicle.